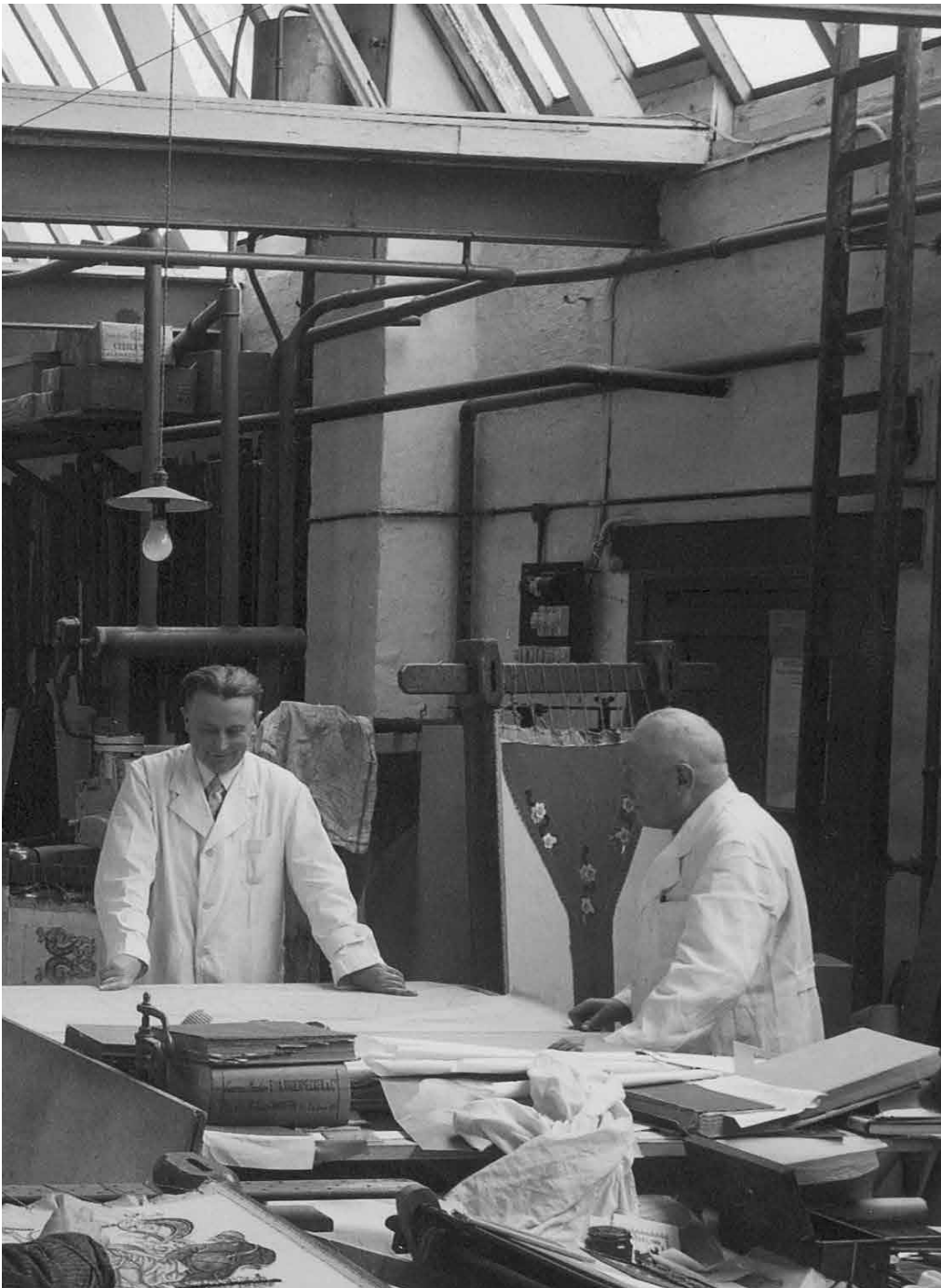


SLABBINCK®
2017 - 2019





All of our vestments and paraments are made in our workshop in the beautiful city of Bruges, Belgium. This is the city where our great-grandfather and founder Hendrik Slabbinck, started his specialized embroidery workshop in 1903. The fourth generation is in charge of the company, serving the liturgy now for 115 years. We thank you for your support and look forward to serving you.





new

Chasuble in **Moiré**, 55% cotton, 45% man-made fibres; with hand embroidered ornaments and "Good Shepherd" machine embroidered emblem; finished with gold braid. Width 160 cm, length 135 cm; with inside stole.

5283 Chasuble, roll collar "4"





Art Studios Slabbinck has been producing high quality textiles for churches from all over the world for 4 generations. Our own workshop in Bruges ensures that every parament is finished with great care. The many years of know-how of our employees enable us to deliver unmatched quality in a very short delivery period. We look forward to bringing your order with the necessary care and a clear eye for quality to a good end.



new

Sentia, 55% silk and 45% man-made fibres. With machine embroidered lines in gold-, silver- and old-gold threads. Chasuble, width 150 cm, length 135 cm; with inside stole.

- 5285** Chasuble, roll collar "4"
- 5286** Chasuble, roll collar "4"
- 7-5285** Dalmatic
- 50-5285** Overlay stole, style 25
- 34-5285** Deacon stole
- 72-5285** Mitre, when ordering, please indicate head size

5286

Candlelight procession in Fatima

Liturgical vestments designed for the occasion of the centenary of the apparitions of Our Lady of Fatima.

The circular lines symbolize the believers who are gathered around the figure of Our Lady in the square of the pilgrimage site, although each separate, yet connected in prayer.

The white fabric refers to the immense light shining during the apparitions.

The gold and silver threads in the embroidery, refer to the decorations on the robes of the Virgin.



50-5285



72-5285

5285

new



5262



5263

In **Moiré**, fabric of 55% cotton, 45% man-made fibres. Chasuble with embroidered emblem in gold- and colour threads, banding and chasuble edges in gold braid.

Width 140 cm, length 125 cm; with inside stole.

Same design on front and back.

5260, 5261, 5262, 5263, 5264 or 5265 Chasuble



5264



5265



5260



5261

new



Sentia, 55% silk with 45% man-made fibres.
Chasuble, width 150 cm, length 135 cm; with inside stole.
Embroidered motif "The Four Evangelists", according to an
embroidery, designed by our art studio during Worldwar II.
5284 Chasuble, roll collar "4"

5284

Cantate, 99% wool and 1% lurex.

Chasuble, width 150 cm, length 135 cm; with inside stole.

Embroidered floral design with Saint George on the front and back.

5232 Chasuble, roll collar "4"

Duomo, 100% man-made fibres.

Chasuble, width 160 cm, length 135 cm; with inside stole.

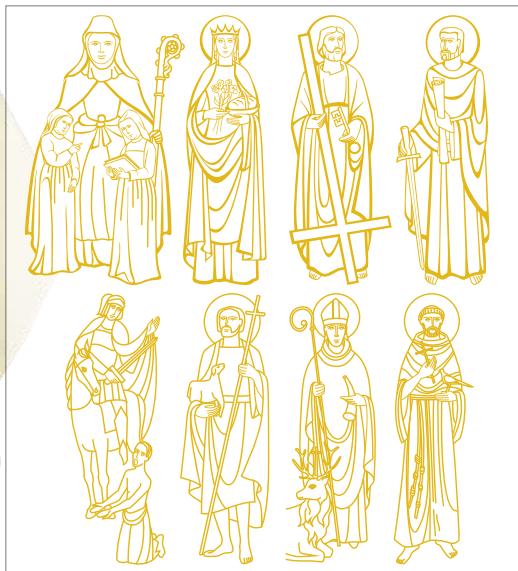
Red velvet band with embroidered floral motif "Divine Mercy".

5288 Chasuble, roll collar "4"

new



5232



5288

Vaticano, 70% man-made fibres and 30% viscose.

With woven band in velvet and brocade, finished with gold braid.

Chasuble, width 150 cm, length 135 cm; with inside stole.

5235 Chasuble

5236 Chasuble

7-5236 Dalmatic, bands in velvet

50-5236 Overlay stole, style 38

new



5235



5236



7-5236



50-5236

Dupion, 70% man-made fibres, 30% viscose.
Chasuble, width 150 cm, length 135 cm; with inside stole.
With machine embroidered floral motif.

5223 Chasuble, roll collar "4"
5224 Chasuble

new



5223

5224

5224

5224

5224

Brugia, 100% wool.
Chasuble, width 150 cm, length 135 cm; with inside stole.
5237 Chasuble
50-5237 Overlay stole, style 25

Barbara, 70% man-made fibres and 30% viscose.
With woven band in brocade, finished with red/gold braid.
Chasuble, width 150 cm, length 135 cm; with inside stole.
5238 Chasuble
230-5238 Roman stole
72-5238 Mitre, when ordering, please indicate head size

new



5237

50-5237

5238

72-5238

230-5238



Four Evangelists.

3983 Chasuble in **Cantate**, roll-collar "4" in velvet.
Hand embroidery on velvet banding.
Width 160 cm, length 135 cm



3983



3950

Marian chasubles.

3950 Chasuble in **Cantate**, roll-collar "4" in velvet.
Applique embroidery on a velvet band.
Width 160 cm, length 135 cm

5289 Chasuble in **Duomo** fabric.
Digitally printed design on damask banding.
Other images available on request.
Width 160 cm, length 135 cm



5289

CANTATE

Cantate, 99% wool and 1% lurex.

Monastic chasuble **2-3850**, machine embroidered with gold and silver coloured threads on woven banding. Chasuble, width 160 cm, length 135 cm; with inside stole.

2-3850 Monastic chasuble, embroidered roll collar "3"

50-3851 Overlay stole, style **38**

70-3850 Cope, unlined

72-3850 Mitre

Seta, the handwoven fabric on which the band is embroidered, may show random knots. These are not to be considered as flaws, but enhance the rustic beauty of this fabric.



50-3851



2-3850



72-3850



70-3850

Cantate, 99% wool and 1 % lurex.

Marian chasubles.

Chasuble, width 160 cm, length 135 cm; with inside stole.

5034 Chasuble, with embroidered collar "6A". All hand embroidery

50-5034 Overlay stole, style 25

With velvet band and hand embroidered emblem.

5162 Chasuble, roll collar "4"

50-5163 Overlay stole style 25;



5034



50-5034



50-5163



5162



Exquisite hand embroidery in the finest cotton and gold coloured threads.

Lamb of God

3356 Chasuble, roll-collar "4"

50-3356 Overlay stole, style 38

Cross motif.

3569 Chasuble, embroidered roll-collar "4"

Four Evangelists.

50-3568 Overlay stole only, style 38 in **Choral** fabric



3356



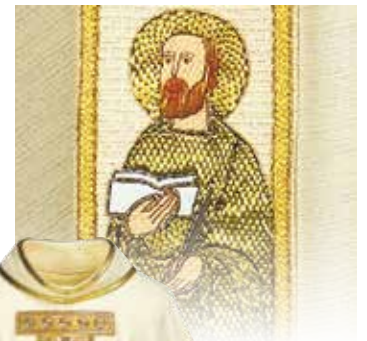
50-3356



50-3568



3569





5257

Duomo, 100% man-made fibres.

Chasuble, width 160 cm, length 135 cm, with inside stole.
Band in velvet with embroidered gold crosses, lined with fine gold braid.

5257

Chasuble, roll collar "4"

new



5257



5257



5257



VICENZA

Vicenza, 35% man-made fibres, 50% viscose and 15% flax.

Chasuble, width 150 cm, length 135 cm; with inside stole.
With machine embroidered crosses on application.
Only available in flax colour.

5082

Chasuble

50-5082

Overlay stole, style 25

34-5082

Deacon stole

5083

Chasuble, roll-collar "4"

STADELMAIER
by
SLABBINCK
MADE IN BELGIUM



5083



50-5082



34-5082



5082

SLABBINCK®



www.createyourchasuble.com

Create your own vestment online, according to your taste and budget. Create a vestment in a very inter-active way, with immediate visual response.

Example of chasubles you can create with our website: www.createyourchasuble.com



Adornes, damask fabric of 100% man-made fibre. Chasuble, with embroidered crosses, width 150 cm, length 135 cm; with inside stole.

3978 Chasuble

50-3978 Overlay stole, style 25

7-3978 Dalmatic

34-3978 Deacon stole

All vestments in this catalogue can be made in Roman style.

Roman chasuble (**299-3978**), maniple (**233-3978**), burse (**32-3978**), chalice veil (**31-3978**) and Roman stole (**230-3978**).



3978

3978

3978

3978

3978

3978

50-3978

REGINA



34-2749



7-2749



3377-0



66-2752

62-2752



64-3144

62-3143



2749-4



35-2896

Dupion, 70% man-made fibres and 30% viscose.

With **Regina** orphreys. Chasuble, width 150 cm, length 135 cm.

2749-0 Chasuble

2749-4 Chasuble, roll-collar "4"

2750-0 Chasuble

2751-4 Chasuble, roll-collar "4"

2752-0 Chasuble

3377-0 Chasuble

299-2749 Roman chasuble

7-2749 Dalmatic

34-2749 Deacon stole

50-2749 Overlay stole, style 65

62-2749 Lectern cover, sizes see p. 95

62-3143 Lectern cover, sizes see p. 95

64-3144 Altar cover, sizes see p. 95

70-2749 Cope, unlined

72-2749 Mitre

Completely in **Regina** brocade.

35-2896 Lectionary cover, indicate the type and dimensions of book, see p. 57

50-3371 Overlay stole, style 65

62-2752 Lectern cover, sizes see p. 95

66-2752 Laudian frontal, sizes see p. 95

Matching funeral pall, see p. 59.



50-2749



2749-0



2749-0



2749-0



2749-0



2750-0



2751-4



2752-0



72-2749

70-2749



50-3371



62-2749

Dupion, with **Regina** orphrey
Chalice veil, 58 x 58 cm.



31-2749

Burse, 20 x 20 cm.



32-2749



299-2749





Cantate, 99% wool and 1% lurex.
Chasuble, width 160 cm, length 135 cm; with inside stole.
Machine embroidered cross and lines.

5195 Chasuble, roll-collar "4"

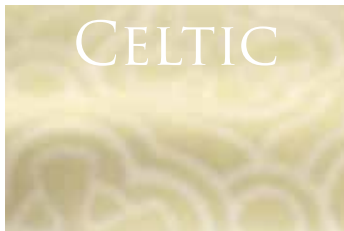


5195

5195

5195

5195



CELTIC

Celtic, 100% man-made fibres.
Monastic chasuble, width 160 cm, length 135 cm; with inside stole.
Woven banding with *hand embroidered* cross motif in relief.

2-3858 Monastic chasuble, roll-collar "3"
50-3858 Overlay stole, style 25
7-3858 Dalmatic, roll-collar "3"
34-3858 Deacon stole



2-3858

2-3858

2-3858

2-3858

Brugia, 100% wool.

Chasuble, width 150 cm, length 135 cm; with inside stole.
Banding and decoration around neck in **Goya**, damask fabric, with gold braid and hand embroidered cross.

- 3358** Chasuble
- 50-3358** Overlay stole, style **25**
- 7-3358** Dalmatic (design same as chasuble)
- 34-3358** Deacon stole
- 70-3358** Cope, unlined



Chasuble, width 150 cm, length 135 cm; with inside stole.
Combination of brocade application and orphreys.

- 3120** Chasuble
- 7-3120** Dalmatic
- 70-3120** Cope, unlined
- 3219** Chasuble
- 3220** Chasuble
- 3221** Chasuble



DUOMO

Duomo, 100% man-made fibres.
Chasuble, width 160 cm, length 135 cm; with inside stole.
With beautiful woven galloon.

In ecru, red, green or purple.
5290 Chasuble
50-5290 Overlay stole, style 65
7-5290 Dalmatic, style IV
34-5290 Deacon stole (see p. 48)



5290

5290

5290

5290



Only in ecru.
5291 Chasuble
50-5291 Overlay stole, style 65
7-5291 Dalmatic, style IV

34-5291 Deacon stole
70-5291 Cope
72-5291 Mitre



5291

50-5291

7-5291

70-5291

72-5291

Tassilo, 100% man-made fibres.
Motifs hand embroidered on velvet band.

Chasuble, width 160 cm, length 135 cm; with
inside stole.

- 5292 Lamb of God (front), IHS (back)
5293 Holy Spirit (front), Flames (back)
5294 Chalice (front), Chiho (back)
5295 Pelican (front), Alpha Omega (back)
Matching overlay stole, style 38
50-5292, 50-5293, 50-5294 or 50-5295
Matching deacon stole, style 34
34-5292, 34-5293, 34-5294 or 34-5295



Dupion, 70% man-made fibres and 30%
viscose.
Chasuble, width 150 cm, length 125 cm; with
inside stole.

Hand embroidered emblem on an orphrey in
Regina, a multi-coloured brocade.

3168, 3169, 3170, 3171 or
3361 Chasuble

- Matching.
50-3168, 50-3169, 50-3170, 50-3171 or
50-3361 Overlay stole, style 65
7-3168, 7-3169, 7-3170, 7-3171 or
7-3361 Dalmatic (emblem and band same positioning
as chasuble)

Matching paraments, see p. 16 and 17.





Dupion, 70% man-made fibres and 30% viscose.
Chasuble, width 150 cm, length 135 cm; with inside stole.
With machine embroidered cross with gold coloured thread.

5057, 5058, 5059 or 5060 Chasuble



5057

5058

5059

5060



Chasuble, width 150 cm, length 135 cm; with inside stole.
With machine embroidered crosses.

5225 Chasuble



5225

5225

5225

5225

Washable Dupion, 70% man-made fibres and 30% viscose.
Embroidery in colour and gold threads.
Chasuble, width 160 cm, length 135 cm; with inside stole.

3275, 3276, 3277 or 3278 Chasuble
50-3275, 50-3276, 50-3277 or 50-3278 Overlay stole, style 25
7-3275, 7-3276, 7-3277 or 7-3278 Dalmatic
34-3275, 34-3276, 34-3277 or 34-3278 Deacon stole



3278

3275

3276

3277

50-3277

Monastic chasuble, roll-collar "3", width 150 cm, length 135 cm; with inside stole
Machine embroidered crosses.

2-5088 Monastic chasuble, unlined
2-5188 Monastic chasuble, lined, with crosses on sleeves



2-5088

2-5088

2-5088

2-5088

2-5188

Dupion, 70% man-made fibres and 30% viscose.
Chasuble, width 150 cm, length 135 cm; with inside stole.
With printed band.

5229 or
5230 Chasuble



Dupion, 70% man-made fibres and 30% viscose.
Width 150 cm, length 135 cm; with inside stole.
Adorned with a printed band in **Pius**, 100% man-made fibres.

5056 Chasuble, roll-collar "4"



Pius, 100% man-made fibres.
Chasuble width 160 cm, length 135 cm, with inside stole.
With digital printed band with cross motif.

5249 Chasuble, roll-collar "3"

new



Pius, 100% man-made fibres.
Chasuble width 160 cm, length 135 cm, with inside stole.
With woven band and gold cord.

5252 Chasuble, roll-collar "3"

new



AGATE

Agate, 100% man-made fibres.

Chasuble, width 172 cm, length 135 cm; with inside stole.

5175 Chasuble, roll-collar "3"

50-5175 Overlay stole, style **38**

7-5175 Dalmatic, roll-collar "3" (see p. 49)

34-5175 Deacon stole (not illustrated)

50-5175



5175

5175

5175

5175

5175

Brugia, 100% wool.

Chasuble, width 150 cm, length 135 cm; with inside stole.

Linear design in wool and cross in application.

5226

Chasuble, roll-collar "3"

new



5226

5226

5226

5226

Cantate, 99% wool and 1% lurex.
Chasuble, width 160 cm, length 135 cm; with inside stole.
Also available in red, green and purple.
With application in **Tiara**-fabric.

5020 Chasuble, roll-collar "4"
5021 Chasuble, roll-collar "4"
7-5020 Dalmatic, roll-collar "4"



TIARA

Any heraldic shield can be hand embroidered directly on or used as an application on any vestment **price on request**



5020



5021



7-5020

Chasuble, width 160 cm, length 135 cm; with inside stole.
Band with embroidered crosses, decorated with gold braid.

5177 Chasuble, low stand-up collar "6"
5178 Chasuble
7-5177 Dalmatic, type II
72-5177 Mitre



5177

72-5177

5178

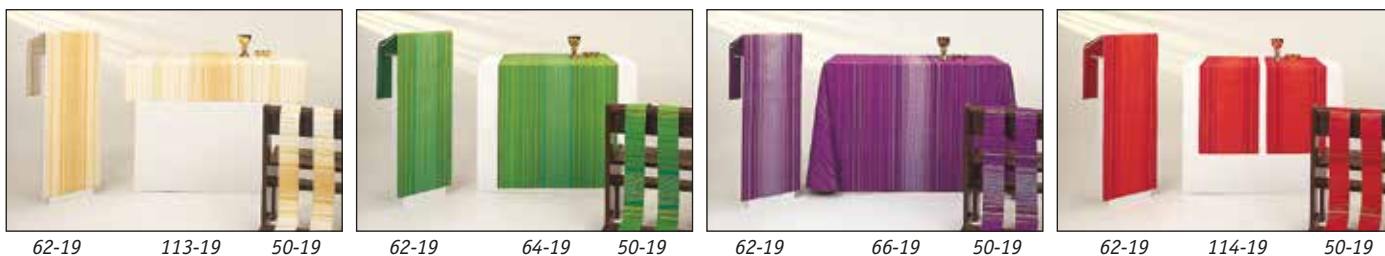


7-5177

MELCHIOR

Melchior, 99% viscose and 1% gold threads.
 Chasuble, width 160 cm, length 135 cm; with inside stole.
1-19 Chasuble, low stand-up collar "6"
50-19 Overlay stole, style 25
51-19 Reversible overlay stole, style 25
7-19 Dalmatic, low stand-up collar "6"
34-19 Reversible deacon stole
434-19 Deacon stole, Byzantine cut

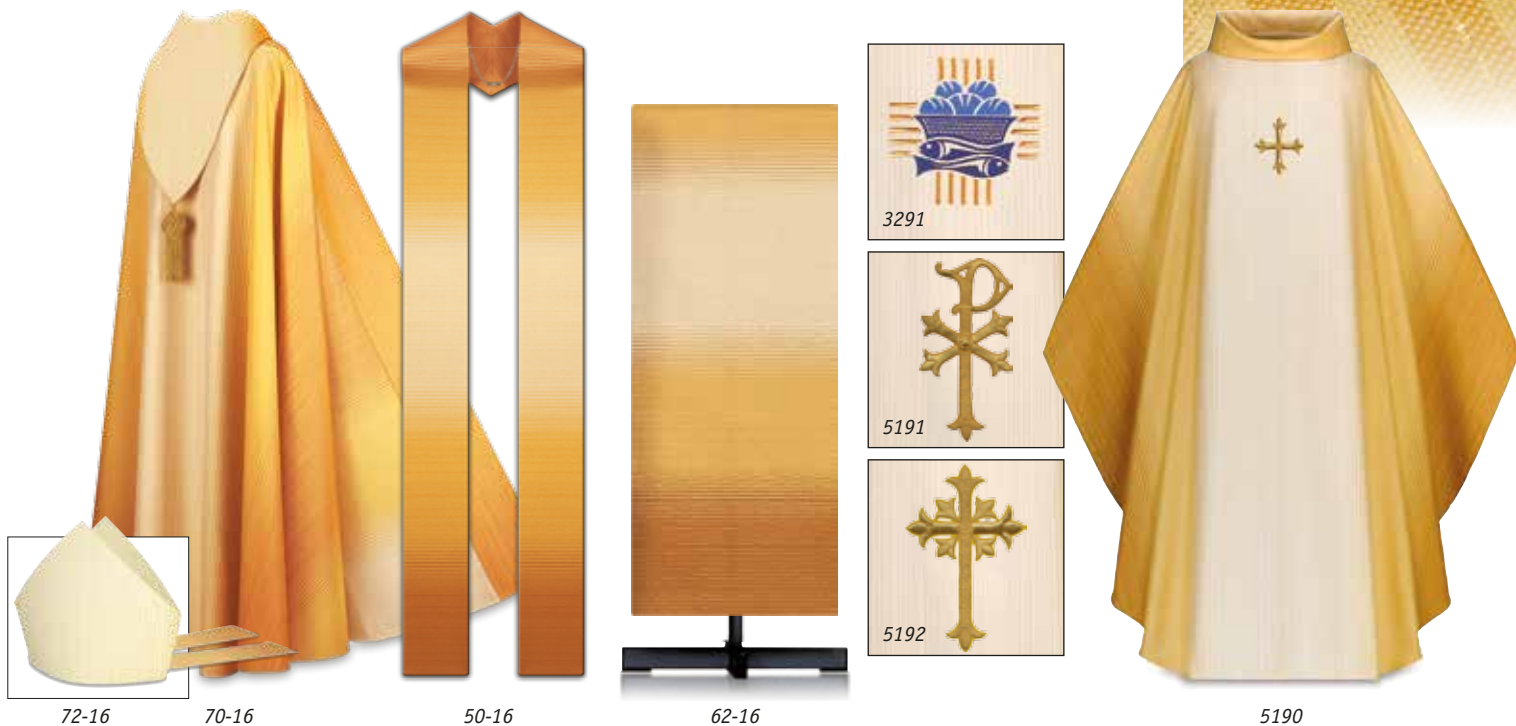
70-19 Cope, unlined
72-19 Mitre
62-19 Lectern cover, sizes see p. 95
64-19 Altar cover, sizes see p. 95
66-19 Laudian frontal, sizes see p. 95
113-19 Half altar cover, sizes see p. 95
114-19 Altar paraments, sizes see p. 95 each



Damiano, 97% man-made fibres and 3% viscose, woven in colour and gold threads. In gold, red, green or purple.
Chasuble, width 160 cm, length 135 cm, roll-collar "3"; with inside stole.

- 3291** Chasuble, machine embroidered motif
5190 Chasuble, hand-embroidered emblem
5191 Chasuble, hand-embroidered emblem
5192 Chasuble, hand-embroidered emblem

- 50-16** Overlay stole, style **25**
7-16 Dalmatic, roll-collar "3"
34-16 Deacon stole, sizes see p. 95
62-16 Lectern cover, sizes see p. 95
70-16 Cope, unlined
72-16 Mitre



Brugia, 100% wool.
Overlay stole and orphreys on chasuble, in **Ornata** (100% viscose).
Chasuble, width 150 cm, length 135 cm; with inside stole.

- 3111** Chasuble, roll-collar "4"
3-3110 Chasuble with overlay stole
1-92 Chasuble only
50-3110 Overlay stole only
7-3111 Dalmatic, roll-collar "4"
34-3110 Deacon stole
70-3111 Cope, unlined



ORNATA



Brugia, 100% wool.

- Monastic chasuble, width 150 cm, length 135 cm; with inside stole.

With woven bands, in the centre and on the sleeves.

2-5227 Monastic chasuble, roll-collar "4"

- Chasuble, with woven band in the centre.

5228 Chasuble, roll-collar "4"

- Overlay stole, style 25.

50-5228 Overlay stole



2-5227



5228



50-5228



Chasuble, width 150 cm, length 135 cm; with inside stole. Collar and band on front and back in colourful application.

5176

Chasuble, roll-collar "4"



5176



5176



5176



5176

Venetia, 100% man-made fibre, with motifs woven into the fabric.
Monastic chasuble, width 160 cm, length 135 cm; with inside stole.

2-3675 Monastic chasuble, roll-collar "3"
50-3675 Overlay stole, style 25
7-3675 Dalmatic, roll-collar "3"
34-3675 Deacon stole



Cantate, 99% wool and 1% lurex, with machine embroidered cross in gold threads.
Chasuble, width 160 cm, length 135 cm, with inside stole.

5089 Chasuble, roll-collar "4"
7-5089 Dalmatic, roll-collar "4"
34-5089 Deacon stole
50-5089 Overlay stole, style 38
72-5089 Mitre





Dupion, 70% man-made fibres and 30% viscose, with application in **Cantate**, 99% wool and 1% lurex, gold fabric finished with embroidered gold lines.
Chasuble, width 150 cm, length 135 cm; with inside stole.

5167 Chasuble
5168 Chasuble
7-5168 Dalmatic



5167

5167

5167

5167

5168

TERRA

Washable Terra, 70% man-made fibres and 30% viscose, with border and cross motifs with colour gradation woven into the fabric.
Width 160 cm, length 135 cm; with inside stole.

3160 Chasuble, roll-collar "3"
50-3160 Overlay stole, style **38**
7-3160 Dalmatic
34-3160 Deacon stole (see p. 48)
3-3160 Chasuble in **washable Terlenka**-fabric with overlay stole
1-61 Chasuble only (w. 150, cm l. 135 cm)
50-3160 Overlay stole only, style **38**



3160

3160

3160

3160

3-3160

7-3160

Lucia, 53% man-made fibres, 31% cotton, 16% viscose.
Monastic chasuble, width 150 cm, length 135 cm; with
inside stole.
Linear design with gold cord.

2-5239 Monastic chasuble, roll-collar "3"



new



2-5239

2-5239

2-5239

2-5239

Terlenka, 70% man-made fibres and
30% viscose.
Chasuble, width 150 cm,
length 135 cm; with inside stole.
With elegant galloon.
5144 Chasuble

Dupion, 70% man-made fibres and
30% viscose.
Motifs in application.
Chasuble, width 150 cm,
length 135 cm; with inside stole.
5090 Chasuble

Partly in **Brugia**, 100% wool and
partly in **Cantate**, 99% wool and 1%
lurex, with cross in application.
Chasuble, width 150 cm,
length 135 cm; with inside stole.
5161 Chasuble



5144

5090

5161



5155

5156

5157

5158

Cantate, 99% wool and 1% lurex; machine embroidery.
Chasuble, width 160 cm, length 135 cm; with inside stole.

5155, 5156, 5157 or
5158 Chasuble
5155, 5156, 5157 or
5158 Chasuble, roll-collar "4" (not illustrated)



5159

5159

5159

5159

Pius, 100% man-made fibres.
Chasuble, width 160 cm, length 135 cm; with inside stole.
Printed band in **Pius**.

5159 Chasuble
5159 Chasuble, roll-collar "4" (not illustrated)

Amore di Cristo



5094

The inspiration for this design is the Cross. Christianity identifies with this symbol, reminding us of the suffering and death of Jesus, but reminding us that new life has blossomed. The cross is the sign of Christ's victory over the hardships encountered by the faithful throughout the centuries: The Church has not been defeated and lovingly opens its arms to embrace those filled with Christ's Love.

Il Soffio



5095

The breath of the Spirit, symbolized by the central white band, enters the chasuble and the house of God as a guide to the community and the Church. The breath broadens and directs the way to salvation with a new point of view and a new start. The golden thread points to renewal, the enlightenment by the Light of Christ.



Albero della Vita



5096

Maestro Albano Poli's style is immediately recognizable by his recurring use of the Tree of Life. This design evokes pure light, with straight simple lines. It suggests that mankind is profoundly rooted in earth with arms raised to heaven, which relates to the Man, the Son, nailed to the cross with arms outstretched to the Father.

Filo di Luce



5097

The thread of light runs vertically through this design, just as the Spirit enters and purifies the soul. Witness His words "I am the light." The lighter vertical band suggests transformation, signifying the Light of Conversion on the road to Damascus.

Sentia, 55% silk and 45% man-made fibres.

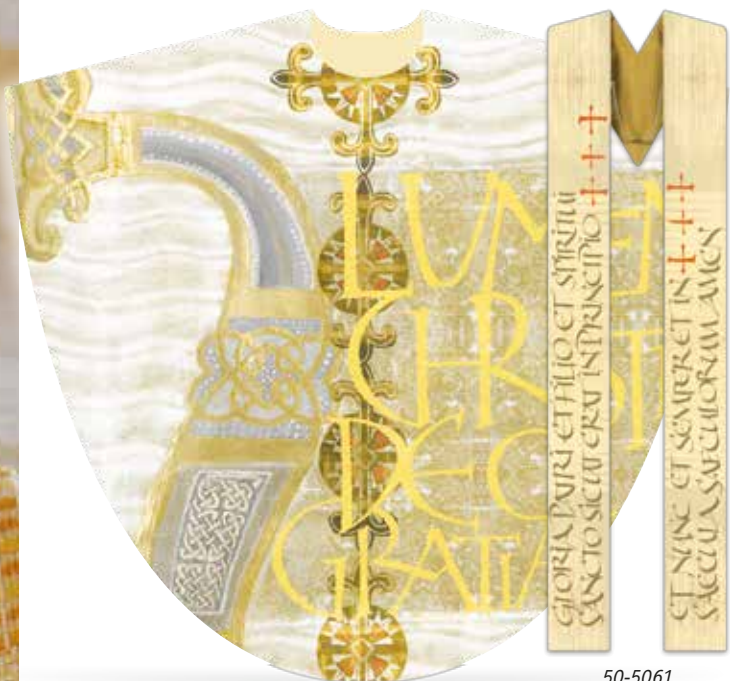
Chasuble, roll-collar "4". Width 150 cm, length 135 cm, with inside stole.

5094, 5095, 5096 or

5097 Chasuble, lined

5006 Features the words "Lumen Christi, Deo Gratias", as recited by the faithful as the Paschal candle is processed on Easter Saturday. Beneath, detail from an 11th century German manuscript and a fragment of the letter L (for Liber, book) decorated with a Celtic knot, a symbol of eternity.

5007 Pentecost chasuble. In the background: detail of the Pentecost mosaic from San Marco in Venice, placed over the heart of the priest and carries the dove, from which radiate twelve rays symbolizing the apostles. In the foreground in golden yellow: "Veni Creator Spiritus" sung in the Pentecost liturgy.



5006

50-5061



5007

50-5062

5008 On the right side is a page from a medieval bible, written in dramatic Gothic script, representing the preaching of the Gospel. To the left in bold, yellow calligraphy: "Sanctus Dominus Deus Sabaoth" from the Sanctus of the Mass.

Design by **Brody Neuenschwander**, an American calligrapher and text artist whose work explores the boundaries between text and image, digitally printed in **Pius**, a 100% man-made fibres fabric. Chasuble. Width 150 cm, length 135 cm; with inside stole.

5009 Purple chasuble, with text of the Magnificat, and a stripe of dense, almost troubled writing representing the dark night, but written in gold and ochre to represent the light of Resurrection at the end of Lent, or the birth of Christ at the end of Advent.

5006, 5007, 5008 or 5009 Chasuble, lined
50-5061, 50-5062, 50-5063 or 50-5064 Overlay stole, style 38



5008

50-5063



5009

50-5064

Sentia, 55% silk with 45% man-made fibres.
Chasuble with embroidered cross in gold and wool
threads on silk applique (model **Piano**).
Width 160 cm, length 135 cm; lined; with inside stole.

2-90102 Monastic chasuble ,
roll-collar "4"



2-90102

2-90102

2-90102

2-90102

Chasuble with woven band, width 150 cm, length
135 cm; with inside stole.

5183 Chasuble , roll-collar "4"



5183

5183

5183

5183



44 - Sanctuary alb (Vaticano)



Washable gown, sanctuary alb

Manufactured in easy-to-laundry, wash-and-wear fabrics. Prices each for standard sizes.

• Washable liturgical gown

In two styles:

- style **95**: with deep hood;
- style **195**: with roll-collar in front and capuche at the back.

95 or 195 Leo, flax-colour

95 or 195 Livorno, 45% wool, white, beige or black

95 or 195 Pius, white, ecru or beige

95 or 195 Vaticano, beige

• Washable sanctuary alb

Style **44**. Style without decoration.

Neck finish with roll-collar in front and capuche at the back.

Monastic style; garment is pulled over the head.

Wide sleeves (33 cm) and slits to the trousers pockets.

Style **244**. This style is a combination of style **44**, with the collar of style **95** (deep hood).

44 or 244 Athos, grey

44 or 244 Brugia, of 100% wool, all colours

44 or 244 Greco, beige

44 or 244 Jersey, white

44 or 244 Leo, flax-colour

44 or 244 Livorno, 45% wool, white, beige or black

44 or 244 Pius, white, ecru or beige

44 or 244 Prisma, of 45% wool, white

44 or 244 Terlenka, all colours

44 or 244 Vaticano, beige

Washable cassock-alb

Style **405**: coat style; with stand-up collar; has slits to the trousers pockets.

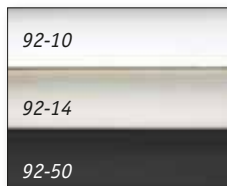
405 Jersey, white

405 Leo, flax-colour

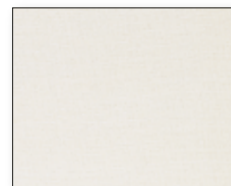
405 Terlenka, all colours



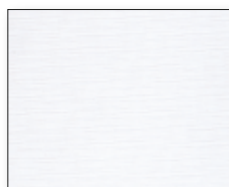
Athos-37



Brugia-92



Greco-77



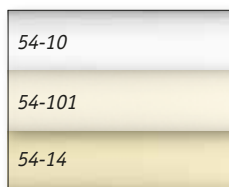
Jersey-53



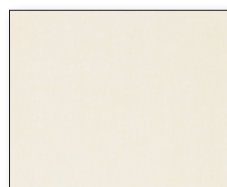
Leo-70



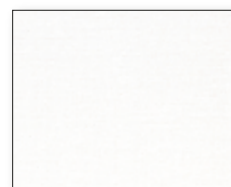
Livorno-20



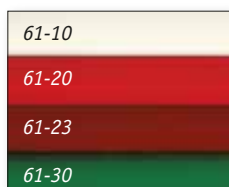
Pius-54



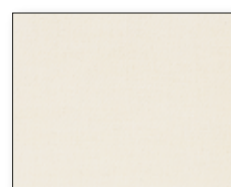
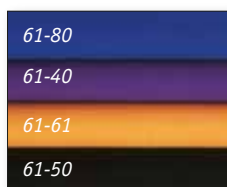
Prisma-26



Ravenna-87



Terlenka-61



Vaticano-67



405 - Cassock-alb

Coat style; with stand-up collar; has slits to the trousers pockets; turn-back concealing zipper; two side pleats on front and back. See also page 42.



95 or 195 - Liturgical gown

Particularly full and ample cut with wide sleeves (60 cm). Monastic style; garment is pulled over the head. In two styles: style **95**: with deep hood or style **195**: with roll-collar.

Standard sizes				
When ordering, please indicate length A-B: from base of the neck to top of shoe (usually approx. 30 cm less than person's height).				
Neck size for sizes Slim and Regular : 42 cm.				
Neck size for sizes Large and XLarge : 46 cm.				
MEN	Chest C			
length A-B	95 cm slim	105 cm regular	115 cm large	125 cm XLarge
140 cm	SK	MK	LK	50
145 cm	0	2	5	51
150 cm	1	3	6	52
155 cm	8	4	7	53
160 cm	SG	MG	LG	54
LADIES	Chest C (in cm)		Size	
length A-B				
130 cm	80-85		L6	
132 cm	80-85		L8	
135 cm	85-95		L10	
135 cm	95-105		L11	
137 cm	85-95		L12	
137 cm	95-105		L13	
140 cm	95-105		L14	
145 cm	105-115		L15	
150 cm	115-125		L16	
Should your order not specify (C), regular (105 cm) for men and (85-95 cm) for ladies will be supplied.				
Special sizes				
Supplement for special sizes:				
- only length A-B or sleeve length adjustments				
- entirely custom-made				



44 - Sanctuary alb

Sanctuary alb in **Athos**. Neck finish with roll-collar in front and capuche at the back.



244 - Gown

Gown in **Vaticano**. With roll-collar in front and deep capuche in back.



11 - Alb (Leo)

Washable alb in coat style

The garment is adapted for use under a chasuble, as a vestment for concelebration, for baptism, home Mass or for lectors.



For all styles:

- Convenient coat style. The collar finished with fixed amice, concealing clothing underneath (no separate amice needed).
- With fabric-covered buttons for perfect fit.
- Can replace cassock and rochet.
- Two elegant front and back pleats guarantee complete freedom of movement.
- The style for men: has two slits for access to trousers pockets.
The style for women: has 2 pockets.
- May be worn with or without cincture.
- Manufactured in wash-and-wear fabrics.

- Style without decoration; please specify choice of fabric.

Style 11: choice of plain fabrics.

11 Brugia, 100% wool, all colours

11 Greco, beige

11 Jersey, white

11 Leo, flax-white

11 Livorno, 45% wool; white, beige or black

11 Pius, white, ecru or beige

11 Prisma, white

11 Ravenna, white

11 Terlenka, white, black and other colours

11 Vaticano, beige

- Styles with decoration in sleeves and skirt of garment are shown on page 41.

Should your order not specify preference of embroidery colour, white (10) will be supplied for style 100, and grey-white (59) for style 300.

Matching surplices, see p. 42 and 43.

Standard sizes

When ordering, please indicate length A-B: from base of the neck to top of shoe (usually approx. 30 cm less than person's height).

Neck size for sizes **Slim** and **Regular**: 42 cm.

Neck size for sizes **Large** and **XLarge**: 46 cm.

MEN				
	Chest C			
length A-B	95 cm slim	105 cm regular	115 cm large	125 cm XLarge
140 cm	SK	MK	LK	50
145 cm	0	2	5	51
150 cm	1	3	6	52
155 cm	8	4	7	53
160 cm	SG	MG	LG	54
LADIES				
length A-B	Chest C (in cm)		Size	
130 cm	80-85		L6	
132 cm	80-85		L8	
135 cm	85-95		L10	
135 cm	95-105		L11	
137 cm	85-95		L12	
137 cm	95-105		L13	
140 cm	95-105		L14	
145 cm	105-115		L15	
150 cm	115-125		L16	

Should your order not specify (C), regular (105 cm) for men and (85-95 cm) for ladies will be supplied.

Special sizes

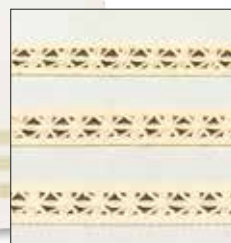
Supplement for special sizes:

- only length A-B or sleeve length adjustments
- entirely custom-made



100 - Alb

Alb in **Greco**, beige. Stitched pleats and washable linear embroidery in white or grey



73 - Alb

Alb in **Greco**, beige. Three rows of lace



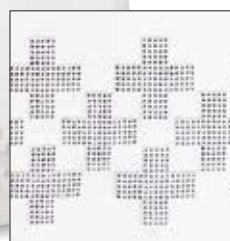
11 - Alb

Alb in **Terlenka**, black. Style without decoration



300 - Alb

Alb in **Ravenna**, white. Washable embroidered motif, in grey-white or gold-white



93 - 3445 Alb

Alb in **Terlenka**, white. Embroidered crosses



137 - Sanctuary alb

Terlenka, all colours. With front and back scapular effect through two pleats; small roll-collar, with zipper on shoulder; to be pulled over the head



285 - (Terlenka)



405 - (Terlenka)

• Washable surplice and surplice-alb

Square neck finish, with pleats in front and back, pulled over the head.

Style 14 or style 214, surplice, standard length (A-B) 90, 97,5 or 105 cm.

14-61 Terlenka, standard length

14-61 Terlenka, in 60 or 70 cm

14-945 Greco, beige, with three inserted lace borders

14-3382 Ravenna, with 28 cm of cotton lace on sleeves and skirt of garment

214-77 Greco, beige, with washable linear embroidery in white (10) or grey (59); please specify embroidery colour, if not specified, white embroidery is supplied

Style 444, matching surplice-alb, standard length 140, 145, 150, 155 or 160 cm.

444-3382 Ravenna, with cotton lace, height 28 cm on sleeves and skirt of garment

444-3718 Terlenka, surplice-alb with embroidered cross in gold threads on front and back

Round neck finish, with gathers in front and back.

Style 414, surplice, standard length (A-B) 90, 97,5 or 105 cm.

414-61 Terlenka

414-2195 Terlenka, with 6 embroidered crosses in gold threads on front and back

The prices are valid only for the surplice or surplice-alb, not for the albs on which they are presented.

• Cassock

Style 285: with stand-up collar (without white collar), pockets and slits to trousers, fabric-covered buttons, lining in sleeves and torso. Dry clean.

285 Cassock, Brugia

285 Cassock, Terlenka

285 Cassock, Livorno

Standard size	C up to	W up to	H	S-S
C2	97 cm	89 cm	38/39	41
C3	102 cm	94 cm	39/40	43
C4	107 cm	99 cm	41/42	45
C5	112 cm	104 cm	42/43	47
C6	117 cm	109 cm	43/44	50
C7	122 cm	114 cm	44/45	52
C8	127 cm	119 cm	45/46	54

When ordering cassock 285 please indicate size A-B.

A-B = length of the finished cassock; from base of the neck to the length desired (e.g. to the top of the shoe).

C = chest size.

W = waist: measurement to be taken over the shirt, pullover or jacket.

H = neck: actual neck size (not shirt size).

S-S = shoulder to shoulder.

Matching cassock cincture

56 Brugia

56 Terlenka

56 Livorno

• Cassock-alb

Style 405: coat style; with stand-up collar; has slits to the trousers pockets; turn-back concealing zipper; two side pleats on front and back.

405 Terlenka

405 Leo

405 Livorno

Standard lengths: 140, 145, 150, 155 or 160 cm (same as for alb, p. 39 and 40).



414-61 - Terlenka

414-2195 - Terlenka

214-77 - Greco

14-945 - Greco

14-61 - Terlenka



444-3718 - Terlenka

444-3382 Ravenna

14-3382 Ravenna



414-61
Illustration: alb, style 205



14-3720

Illustration: alb, style 205

14-3872

Washable surplice

For altar servers or choristers.

In **Terlenka**-fabric, white.

Style **414-61**: with front and back gathers, round neckline.

Style **14-3720**: with inserted woven borders, square neckline.

Style **14-3872**: with beautiful lace ht. 10 cm, square neckline.

Standard sizes:

Altar servers (I); length (A-B): 40 cm, 50 cm or 60 cm.

Altar servers (II); length (A-B): 70 cm or 80 cm.

Adults (III); length (A-B): 90 cm, 97,5 cm or 105 cm.

Style	Price (I)	Price (II)	Price (III)
414-61			
14-3720			
14-3872			

Washable choir and servers albs

For altar servers, choristers, communicants and lectors. This exceptionally well-cut garment, manufactured in wash-and-wear fabrics, may be worn by adults or children, with slits to the trousers pockets for all styles.

Fabrics

Manufactured in crease-resistant, easy to launder wash-and-wear fabrics: **Brugia**, all colours (white supplied unless otherwise requested); **Leo**, flax-white; **Livorno**, white, beige or black (white supplied unless otherwise requested); **Malta**, white; **Pius**, all colours (beige supplied unless otherwise requested); **Prisma**, white; **Terlenka**, all colours (white supplied unless otherwise requested) and **Vaticano**, beige.

Sizes

Length A-B to be indicated (see standard sizes); from base of neck to shoe top (usually approx. 30 cm less than person's height).

Because our albs are hand-made, small differences with the specified measurements might be possible.

Prices standard size	Length A-B in cm / Chest size in cm		
Style numbers	105/71 (nr. 0)	125/81 (nr. 4)	145/102 (nr. 8)
and	110/71 (nr. 1)	130/86 (nr. 5)	150/107 (nr. 10)
fabrics	115/76 (nr. 2)	135/92 (nr. 6)	155/107 (nr. 11)
	120/76 (nr. 3)	140/97 (nr. 7)	160/107 (nr. 12)

Style **4, 10, 13 or 37**

Pius
Terlenka
Leo; Malta or Vaticano
Brugia (100% wool)
Prisma (45% wool) or
Livorno (45% wool)

Style **5 or 205**

Pius
Terlenka
Leo; Malta or Vaticano
Brugia (100% wool)
Prisma (45% wool) or
Livorno (45% wool)

Special sizes: supplement of or , p. 94.

Rope cincture, see p. 64



Cord with hand-made tassel

In rayon (dry clean), a carabiner to hang the cross and to adjust the height of the tassel, length 61 cm. Price, without wooden cross.

3647 (white), **3648** (green), **3649** (gold-yellow), **3650** (blue), **3651** (red), **3652** (purple) or **3653** (beige)

4614 Small wooden cross, ht. 11,8 cm, with ring



4 - Vaticano

Ample monastic style; pulled over the head; with roll-collar in front and capuche in the back; wide raglan sleeves.
For adults we recommend style **44** (see page 40), which allows more fullness through chest and shoulders.



5 - Terlenka

Coat style; special cut elegant capuche; turn-back concealing zipper.

61-10
61-20
61-23
61-30
61-80
61-40
61-61
61-50



10 - Leo

Coat style with hood; front with zipper; raglan sleeves with large hem; inverted back pleats.
Style **13**: as style **10**, but with mandarin style collar.



37 - Terlenka

Front and back scapular effect through two deep pleats; small roll-collar, with zipper on shoulder; to be pulled over the head. For adults we recommend style **137** (see page 41), which allows more fullness through chest and shoulders.



205 - Terlenka

Coat style; stand-up collar; turn-back concealing zipper. For adults we recommend style **405** (see page 42).



278-5274



278-5270



278-5271



278-5272



278-5273



278-5275



278-5276



278-5277



278-5278

Scapular.

Can be worn over a liturgical gown or lay clothes.

Style 278: neckline with small capuche, width 10 cm.

Machine embroidered motif.

Dupion, 70% man-made fibres en 30% viscose.

278-5270 Ictus

278-5271 Alpha-Omega

278-5272 Matrimonial cross

278-5273 Chiro

278-5274 Baptismal shell

278-5275 Holy Spirit

278-5276 Cross and Fish

278-5277 Cross and Alpha-Omega

278-5278 Marian cross

278-25 Without embroidery

278-25 Reversible white/purple or red/green

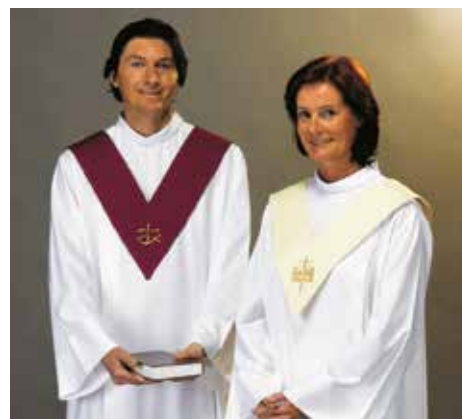
Pius, 100% man-made fibres.

278-5018 Rainbow colours

Agate, 100% man-made fibres.

258-5175 Without embroidery

258-5175 Reversible white/purple or red/green



278-5018



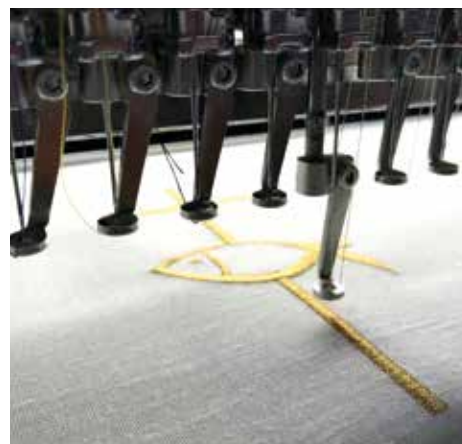
278-25



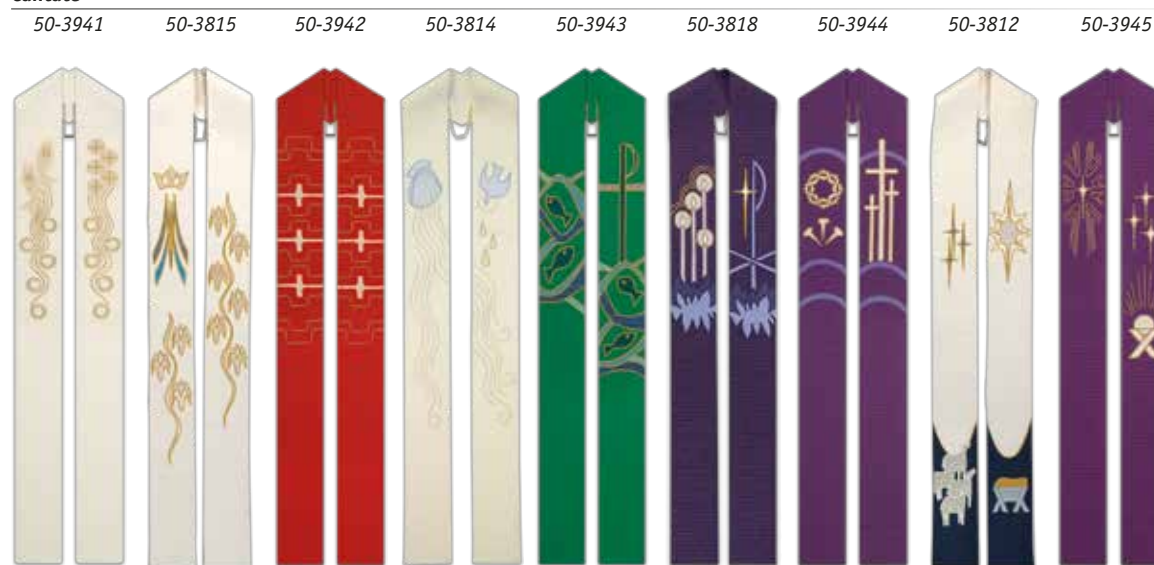
278-5175



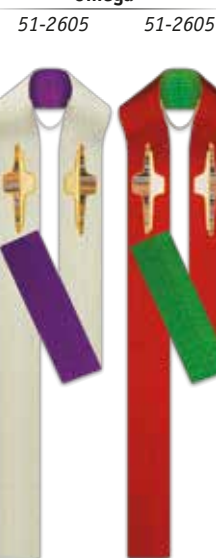
278-5175



Cantate



Omega



Reversible overlay stole

Overlay stole manufactured in **Cantate**, 99% wool and 1% lurex woven into the material.

Style 25.

Reversible overlay stole manufactured in **Omega**, 60% man-made fibres, 30% viscose and 10% flax. With combination of colourful applique and embroidery in gold and colour thread.

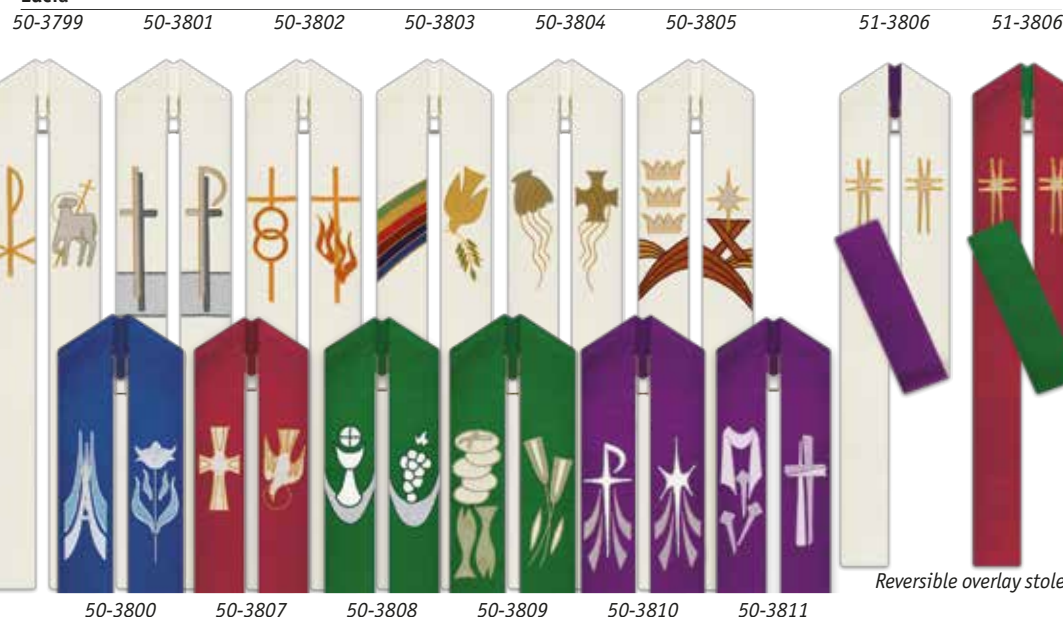
Style 75.

Overlay stole manufactured in **Lucia**, 53% man-made fibres, 31% cotton and 16% viscose, rustic fabric with textured structure.

Style 25.

Most overlay stoles in this catalogue can be made as reversible or deacon stoles. Information and price on request.

Lucia



Reversible overlay stole

Only available in the fabrics, designs and colours as shown.

- Chasuble manufactured in **Dupion**, 70% man-made fibres and 30% viscose. In beige, red, dark green or purple. Width 150 cm, length 135 cm; with inside stole.

3309 "Life of the Blessed Mother"

3359 "Twelve Apostles"

- Overlay stole manufactured in **Gobelin**, a fabric of 100% viscose.

Style 38.

50-3047 "Seven Sacraments"

50-3293 "History of the Church"

50-3309 "Life of the Blessed Mother"

50-3359 "Twelve Apostles"



3359



34-4739



34-2752

34-3160

34-3160

34-2156

34-19

34-2605

34-3277

34-3450

34-5292

34-3219

Deacon stoles, style 34: worn from left shoulder to right hip.

- With hand embroidery.

34-5292 Duomo

- With motifs woven into the fabric.

34-19 Reversible stole, in Melchior

34-2752 Regina, with tassels

34-3110 Ornata

34-3160 Terra

34-3377 Regina, with fringes

- With a combination of applique and embroidery in gold- and wool thread. Front motif at chest height, back motif on lower panel.

34-2156 Pascal

34-2605 Reversible stole, Omega

34-3358 Brugia

34-3811 Lucia

34-4739 Lucia



34-3275

34-3160

34-3552

34-3358

34-3450

34-19

34-3366

- With machine embroidery.

34-3275 Dupion

34-3277 Dupion

34-3450 Damiano

34-3450 Reversible stole, Damiano

34-3553 Dupion

- With ophrey.

34-5290 Duomo

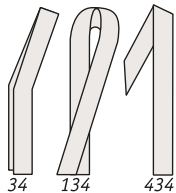
34-3219 Brugia

34-3366 David

34-3552 Dupion

• All deacon stoles in this catalogue can be made as overlay stoles (p. 95, overlay stole) and can also be made as reversible stoles: price on request.

Information deacon stoles and dalmatics, see p. 94 and 95.



34

134

434



34-19

34-3160

34-3110

34-5290

34-3553

34-3450

34-3811

34-3377



7-2749



7-5146



7-5020



7-5175



7-5148

• **Dupion**, 70% man-made fibres and 30% viscose.

7-2749 Dalmatic, with galloon in **Regina**

7-5146 Dalmatic, with galloon in **Regina**

7-5148 Dalmatic, with galloon

7-5149 Dalmatic

7-5150 Dalmatic, with hand embroidery

• **Cantate**, 99% wool and 1% lurex. With application in **Tiara**.

7-5020 Dalmatic, roll-collar "4"

• **Terra**, 70% man-made fibres and 30% viscose. With border and cross motifs with colour gradation woven into the fabric.

7-3160 Dalmatic

• **Brugia**, 100% wool.

Band in **Ornata**.

7-3111 Dalmatic, roll-collar "4"

Combination of brocade application and orphreys.

7-3120 Dalmatic

Banding and decoration around neck in damask fabric, bordered with gold braid; adorned with hand embroidered cross.

7-3358 Dalmatic

• **Pius**, 100% man-made fibres.

7-3576 Dalmatic, with galloon

7-5033 Dalmatic, with galloon and embroidered cross in gold threads

• **Agate**, 100% man-made fibres.

7-5175 Dalmatic, roll-collar "3"

Information deacon stoles and dalmatics, see p. 94 and 95.



7-3358



7-3120



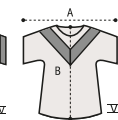
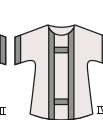
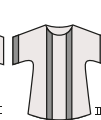
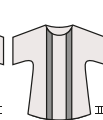
7-2749



7-5175



7-3160



7-5175



7-5149



7-5033



7-5150



7-3111



7-3576



Lucia, 53% man-made fibres, 31% cotton, 16% viscose. Application with embroidery in gold and wool threads.

Chasuble, width 150 cm, length 135 cm; with inside stole.

5266 Chasuble

Overlay stole, style 25: flat capuche.

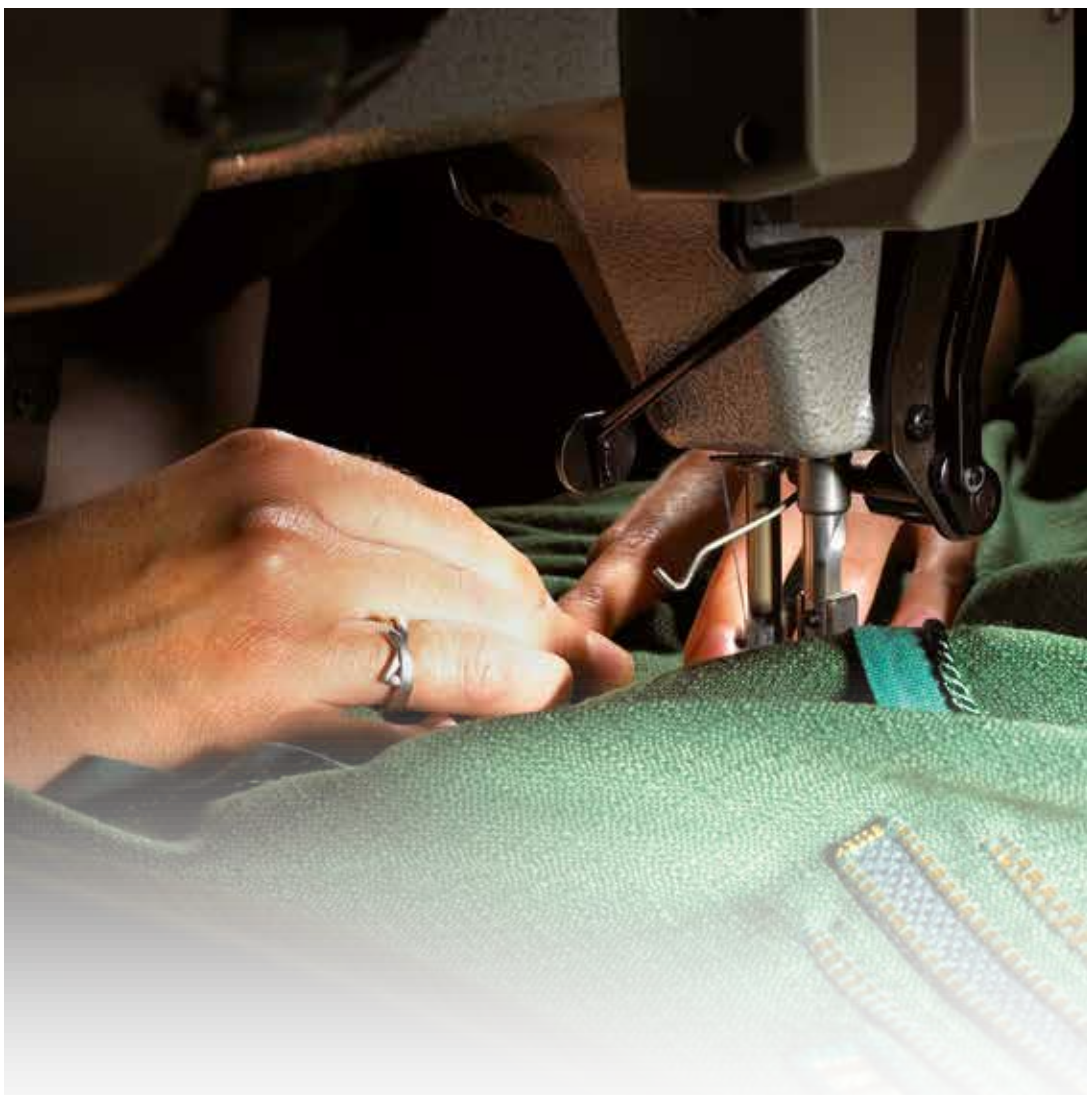
50-5267 Overlay stole

Lectern cover, 45 x 180 cm.

62-5268 Lectern cover

Altar cover, 90 x 190 cm.

64-5269 Altar cover



62-5268



64-5269



50-5267



5266



We take great pride in our ability to create custom projects, some of which are illustrated on this page. We can create basilica ombrellinos, paraments and mitres to your design or special cut, celebration vestments, special tapestries, banners, gonfalons or crests and garb for statues.





5131

50-5132



64-5135

Dupion, 70% man-made fibres and 30% viscose or **Omega**, 60% man-made fibres, 30% viscose and 10% flax, applique with gold and wool embroidery.

Chasuble, width 150 cm, length 135 cm; with inside stole.

5131 Chasuble

50-5132 Overlay stole, style **25**

62-5133 or **62-5134** Lectern cover, 45 x 180 cm

64-5135 Altar cover, 90 x 190 cm

Omega	Dupion
-	-
-	-
-	-

-

-

-



3931

50-3932



64-3935

Lucia, 53% man-made fibres, 31% cotton and 16% viscose or **Dupion**, 70% man-made fibres and 30% viscose, applique with gold and wool embroidery.

Chasuble, width 150 cm, length 135 cm; with inside stole.

3931 Chasuble, roll-collar "3"

50-3932 Overlay stole, style **25**

62-3933 or

62-3934 Lectern cover, 45 x 180 cm

64-3935 Altar cover, 90 x 190 cm

Lucia	Dupion
-	-
-	-
-	-

-

-

-



3174

50-2534



64-2537

Dupion, 70% man-made fibres and 30% viscose or **Omega**, 60% man-made fibres, 30% viscose and 10% flax, applique with gold and wool embroidery.

Chasuble, width 150 cm, length 135 cm; with inside stole.

3174 Chasuble, low stand-up collar "6"

50-2534 Overlay stole, style **25**

62-2535 or

62-2536 Lectern cover, 45 x 180 cm

64-2537 Altar cover, 90 x 190 cm

Omega	Dupion
-	-

-



Dupion, 70% man-made fibres and 30% viscose or **Omega**, 60% man-made fibres, 30% viscose and 10% flax, applique with gold and wool embroidery.

Chasuble, width 150 cm, length 135 cm; with inside stole.

- 5121 Chasuble
 50-5122 Overlay stole, style 25
 62-5123 or 62-5124 Lectern cover, 45 x 180 cm
 64-5125 Altar cover, 90 x 190 cm

Omega Dupion

-

-

-

-



5121



Lucia, 53% man-made fibres, 31% cotton and 16% viscose or **Dupion**, 70% man-made fibres and 30% viscose, applique with gold and wool embroidery.

Chasuble, width 150 cm, length 135 cm; with inside stole.

- 3921 Chasuble, roll-collar "3"
 50-3922 Overlay stole, style 25
 62-3923 or
 62-3924 Lectern cover, 45 x 180 cm
 64-3925 Altar cover, 90 x 190 cm

Lucia Dupion

-

-

-



3921



Pascal, 69% man-made fibres, 30% viscose and 1% gold thread or **Cantate**, 99% wool and 1% lurex, applique and embroidery in gold and wool threads.

Chasuble, width 160 cm, length 135 cm; with inside stole.

- 2155 Chasuble, roll-collar "4"
 50-2156 Overlay stole, style 25
 62-2157 or
 62-2158 Lectern cover, 45 x 180 cm
 64-2159 Altar cover, 90 x 190 cm

Pascal Cantate



2155



5126

50-5127



64-5130

Dupion, 70% man-made fibres and 30% viscose or **Omega**, 60% man-made fibres, 30% viscose and 10% flax, applique with gold and wool embroidery.

Chasuble, width 150 cm, length 135 cm; with inside stole.

5126 Chasuble

50-5127 Overlay stole, style 25

62-5128 or **62-5129** Lectern cover, 45 x 180 cm

64-5130 Altar cover, 90 x 190 cm

Omega Dupion

-

-

-

-



3926

50-3927



62-3929

62-3928

Lucia, 53% man-made fibres, 31% cotton and 16% viscose or **Dupion**, 70% man-made fibres and 30% viscose, applique with gold and wool embroidery.

Chasuble, width 150 cm, length 135 cm; with inside stole.

3926 Chasuble, roll-collar "3"

50-3927 Overlay stole, style 25

62-3928 or

62-3929 Lectern cover, 45 x 180 cm

64-3930 Altar cover, 90 x 190 cm

Lucia Dupion

-

-

-



2160

50-2161



62-2162

62-2163

64-2164

Pascal, 69% man-made fibres, 30% viscose and 1% gold thread or **Cantate**, 99% wool and 1% lurex, applique and embroidery in gold and wool threads.

Chasuble, width 160 cm, length 135 cm; with inside stole.

2160 Chasuble, roll-collar "4"

50-2161 Overlay stole, style 25

62-2162 or

62-2163 Lectern cover, 45 x 180 cm

64-2164 Altar cover, 90 x 190 cm

Pascal Cantate



Dupion, 70% man-made fibres and 30% viscose or **Omega**, 60% man-made fibres, 30% viscose and 10% flax, applique with gold and wool embroidery.

Chasuble, width 150 cm, length 135 cm; with inside stole.

5136 Chasuble
50-5137 Overlay stole, style **25**
62-5138 or **62-5139** Lectern cover, 45 x 180 cm
64-5140 Altar cover, 90 x 190 cm

Omega	Dupion
-	-
-	-
-	-



5136



Lucia, 53% man-made fibres, 31% cotton and 16% viscose or **Dupion**, 70% man-made fibres and 30% viscose, applique with gold and wool embroidery.

Chasuble, width 150 cm, length 135 cm; with inside stole.

3936 Chasuble, roll-collar "3"
50-3937 Overlay stole, style **25**
62-3938 or
62-3939 Lectern cover, 45 x 180 cm
64-3940 Altar cover, 90 x 190 cm

Lucia	Dupion
-	-
-	-
-	-



3936



Pascal, 69% man-made fibres, 30% viscose and 1% gold thread or **Cantate**, 99% wool and 1% lurex, applique and embroidery in gold and wool threads.

Chasuble, width 160 cm, length 135 cm; with inside stole.

2170 Chasuble, roll-collar "4"
50-2171 Overlay stole, style **25**
62-2172 or
62-2173 Lectern cover, 45 x 180 cm
64-2174 Altar cover, 90 x 190 cm

Pascal	Cantate
-	-
-	-
-	-



2170



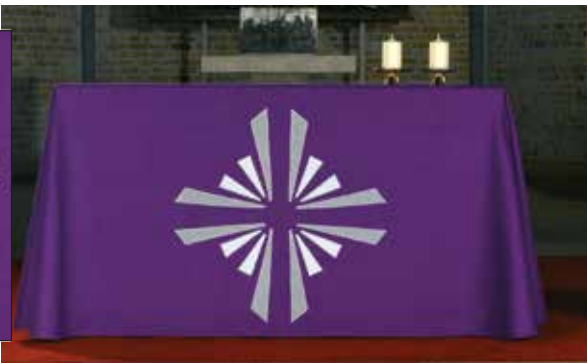
62-3432



66-3431



62-3635



66-3434



62-3241



66-3242



62-1792



66-1791



62-3254



66-3256

Full laudian frontal

Manufactured in **Omega**-fabric or **Lucia**-fabric.

A laudian frontal covers the altar on all sides. The fabric is reinforced with fused backing material and has rounded corners; the hem is finished with a ribbon on the inside. The side drops (D and E) are of equal length.

Available either without embroidery or with an exquisite combination of colourful applique and embroidery in gold and wool threads.

For altar with length (A) up to 180 cm.

Maximum depth (D + C + E)	up to 270 cm	up to 290 cm
Fabric	Omega	Lucia

66 Without embroidery

66-1791, 66-3242, 66-3256, 66-3431,

66-3434, 66-3629, 66-3632

66-2901

If longer or deeper than indicated measurements, supplement per cm

If measurement D + C + E is more than 2 x the width of the fabric **price upon request**

Important

When ordering, please indicate measurements of finished laudian cover:

A = length of mensa;

C = depth of mensa;

D and E = equal front, back and side drops, usually 5 cm less than altar height.

Lectern cover

Fabric	Omega	Lucia
--------	-------	-------

62-1792 Lectern cover

62-3241, 62-3254, 62-3432, 62-3630, 62-3631, 62-3633 or

62-3635 Lectern cover



66-3629



62-3630



66-2901



62-3631



66-3632



62-3633

Interchangeable superfrontal

These stylish interchangeable superfrontals are lined, interlined and easy to attach with velcro (positive part hooklets attached to the altar cloth, negative part felt attached to the superfrontal), making it possible to leave the main cloth on the altar. With these superfrontals, use a heavy altar cloth (e.g. in **Omega**-fabric), or an altar cloth with lining and interlining (double price) to reduce sliding.

They can also be ordered separately for existing altar cloths, in which case we will supply the velcro positive strips free of charge (please indicate if required when ordering). Please note prices are for superfrontals only for altar length (A) up to 180 cm, standard height (D) 25 cm (same price up to 30 cm). Altar cloths at extra charge, see p. 60, 61 and 62.

Manufactured in **Regina**, brocade with multi-coloured fringes. In white/red, white/green, white/purple or white/blue.

69-2752 Interchangeable superfrontal

Following superfrontals are only available in **Omega**-fabric, even for altar cloths ordered in a different fabric. With an exquisite combination of colourful applique with embroidery in gold and wool threads.

69-990, 69-2471, 69-3248, 69-3329, 69-3790, 69-3791,

69-3792, 69-3793, 69-3794, 69-3795 or

69-3796 Interchangeable superfrontal

69-3798 Interchangeable superfrontal

Over length (A) 180 cm, supplement per cm

Over height (D) 30 cm, supplement per cm

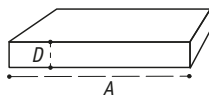
Special texts, such as "He Has Risen", can be embroidered on the superfrontals.

Price includes the first 8 letters; extra charge of per letter over 8.

When ordering, please indicate sizes A and D.

A = altar length.

D = frontal height; standard height 25 cm, same price up to 30 cm.



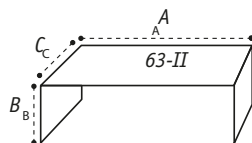
Altar cloth, half laudian frontal

63-51 **Omega**, off-white flax colour, yarn dyed fabric with structured texture of 60% man-made fibres, 30% viscose and 10% flax.

Dry clean only.

Total depth up to 130 cm, price per meter finished.

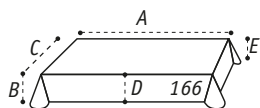
Total depth up to 195 cm, price per meter finished; with seam.



166-3953 **Lucia**, fabric of 53% man-made fibres, 31% cotton and 16% viscose.

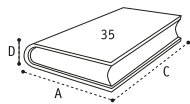
A = length of mensa up to 180 cm and depth = C up to 90 cm, side drops B - D - E up to 25 cm

If longer or deeper, add suppl. per cm



Lectionary cover

Standard size for the new large or small lectionary, sacramentary and Book of Gospel or indicate the type and dimensions of book; width (A), height (C) and depth (D).



Choral-fabric

35-3316



35-3315
Seta-fabric

54-7

Prior-fabric



35-3334

35-3335

35-3336

35-3337

Bible marker.

54-7 Length 45 cm, width 0,7 cm

54-25 Length 45 cm, width 2,5 cm



69-3798



69-3795



69-3796



69-3792



69-3248



69-2752



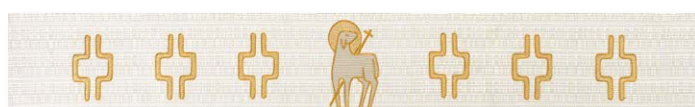
69-3794



69-3791



69-2471



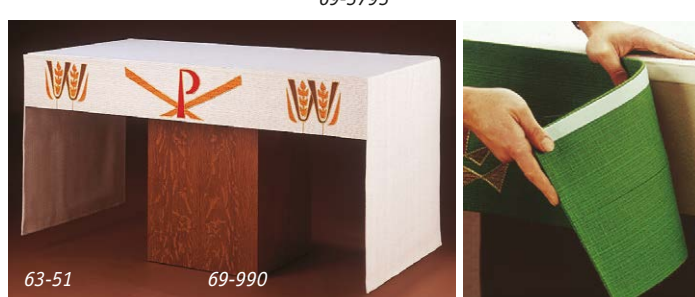
69-3790



69-3329



69-3793



63-51

69-990



Tapestries

A tapestry creates a peaceful, prayerful feel in any setting. Made with an exquisite combination of colourful applique with embroidery in gold and wool threads, they are lined and interlined, with open hem at top and bottom for hanging rods. A hanging rod with two supports supplied only for size: 80 x 32 cm or 120 x 45 cm. All tapestries can be supplied as altar covers or lectern covers.

We are pleased to offer our design service to create tapestries to your personal standards, ideas or taste.

Unit price for standard sizes.						
Price cat.	Tapestries				Lectern cover	Altar cover
	80 x 32 cm	120 x 45 cm	150 x 90 cm	280 x 110 cm	45 x 180 cm	90 x 190 cm
A						
B						

Tapestries available with loops and fringes, **price on request**.



60-3160/G

In washable **Terra**, 70% man-made fibres and 30% viscose, cross-design woven in a grey band.

3160/G Chasuble, width 160 cm, length 135 cm; roll-collar "3"; with inside stole

29 Alb, standard sizes (p. 39)

50-3160/G Overlay stole, style **38**

34-3160/G Deacon stole (p. 48)

60-3160/G Funeral pall, 180 x 300 cm

60-3160/G Funeral pall, 240 x 365 cm



60-3912

Jaspis, 70% man-made fibres and 30% viscose.

Chasuble, width 172 cm, length 135 cm; unlined; with inside stole.

3912 Chasuble

50-3912 Overlay stole, style **38**

34-3912 Deacon stole

60-3912 Funeral pall, 180 x 300 cm

60-3912 Funeral pall, 240 x 365 cm



60-2749

Dupion, 70% man-made fibres and 30% viscose.

With **Regina** orphreys.

Chasuble, width 150 cm, length 135 cm.

2749-0 Chasuble

60-2749 Funeral pall, 180 x 300 cm

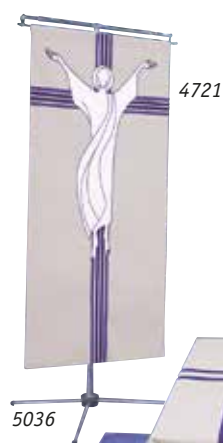
60-2749 Funeral pall, 240 x 365 cm



60-3358



60-3190



4721

60-3447

5036

3448

Vitus, grey, 70% man-made fibres, 30% viscose.

4721 Tapestry, Risen Christ, 90 x 200 cm

5036 Banner stand, see p. 66

60-3447 Funeral pall, 180 x 300 cm

60-3447 Funeral pall, 245 x 365 cm

3448 Carpet¹⁾, Hand-tufted 100 % wool (from New Zealand), 152 x 305 cm, pile height 16 mm



7002

7003

Funeral pall

60-3358 Brugia

60-3190 Dupion, grey

Ash dispenser

In brass. Total height 37 cm, handle included.

7002 Brass

7003 Brass, bronze coloured

Nickel-plated, finished with plexiglas

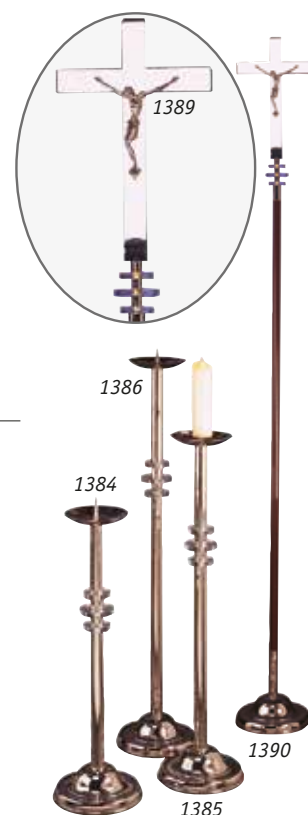
1384 Candlestick, ht. 80 cm

1385 Candlestick, ht. 100 cm

1386 Pascal Candlestick, ht. 120 cm

1389 Processional cross with carrier, ht. 222 cm

1390 Base for processional cross, ø 26 cm



1389

1386

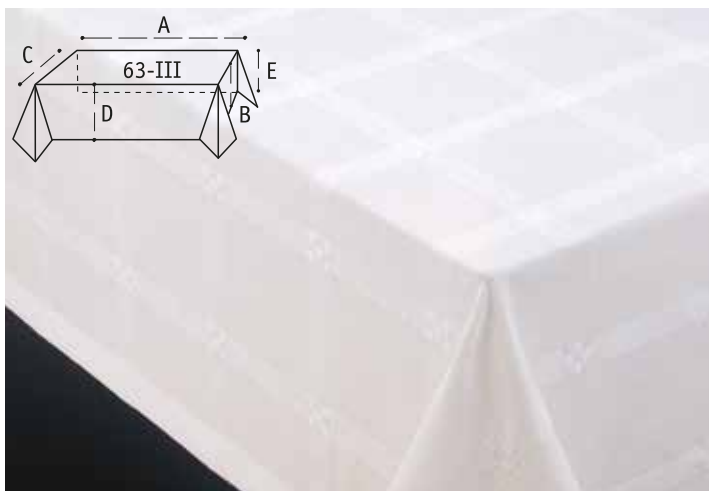
1384

1385

1390

6' x 10'

8' x 6'



63-35 Alpha: white fabric of 95% cotton and 5% linen, with woven crosses. Wash, lukewarm.

Total depth up to 135 cm, price per meter

finished.

Total depth up to 215 cm, price per meter

finished; with seam.



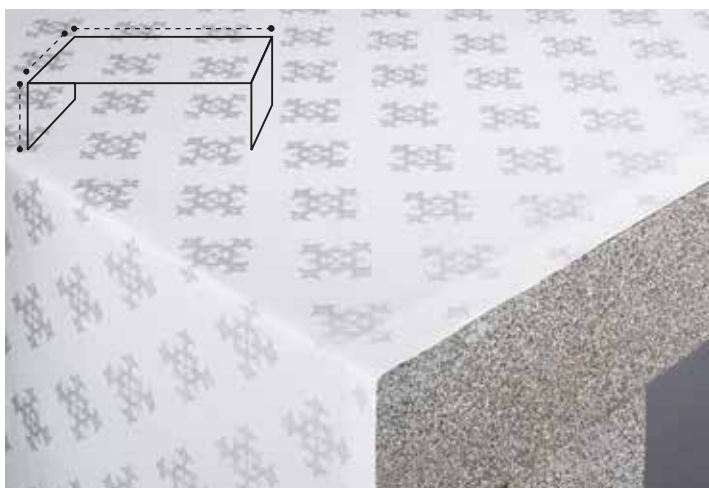
63-41 Basilica: in blended Belgian linen (see 63-38), with inserted woven border on the four sides. Wash, lukewarm.

Total depth up to 122 cm, price per meter

finished.

Total depth up to 185 cm, price per meter

finished; no seam.



63-124 Adornes: damask fabric of 100% man-made fibre, with crosses woven into the fabric. Wash, lukewarm.

Total depth up to 140 cm, price per meter

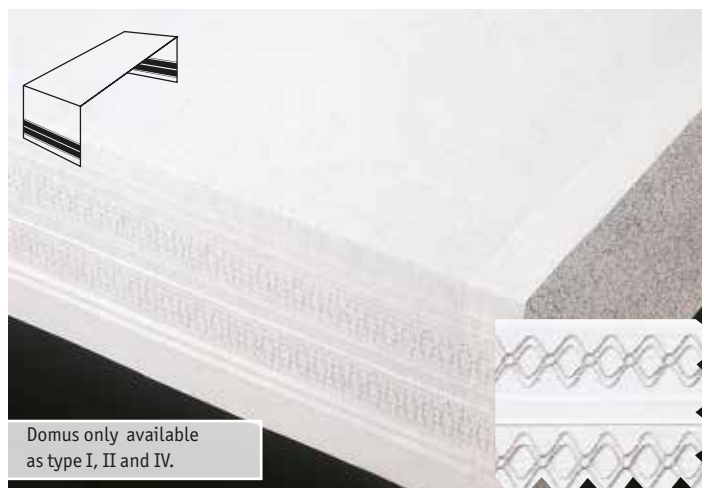
finished.

Total depth up to 210 cm, price per meter

finished; no seam.

Total depth up to 320 cm, price per meter

finished; no seam.



101 Domus: in blended Belgian linen (see 63-38), with linear embroidery and stitched gathers (ht. 17,5 cm) on both side drops, in (10) white, or (59) grey. Wash, lukewarm.

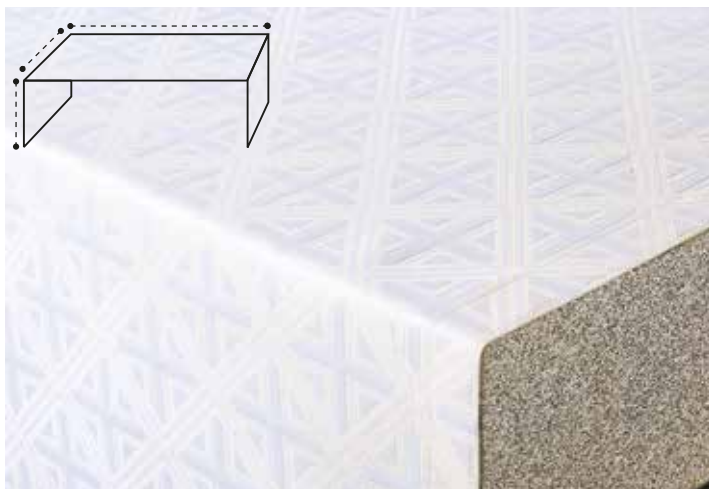
Total depth up to 102 cm, price/meter

finished; supplement embroidery

Total depth up to 170 cm, price/meter

finished; supplement embroidery

no seam.



63-85 Crux: white jacquard fabric of 85% man-made fibres and 15% cotton, with inset woven cross motifs. Wash, lukewarm.

Total depth up to 130 cm, price per meter

finished.

Total depth up to 210 cm, price per meter

finished; with seam.



301 Cathedral: in blended Belgian linen (see 63-38), with open embroidery in (59) grey-white or (60) gold-white. Wash, lukewarm.

Total depth up to 102 cm, price per meter

finished; embroidery included.

Total depth up to 170 cm, price per meter

finished; embroidery included;

no seam.

The price per meter is for the completely finished altar cloth, including 4 cm hem. If total depth is more than indicated depth of the fabric: price upon request.

Easy care altar cloth

These easy to maintain altar cloths for main and side altars are always custom-made; with a 4 cm hem.

Fabric is added to the finished size for shrinkage at first laundering.

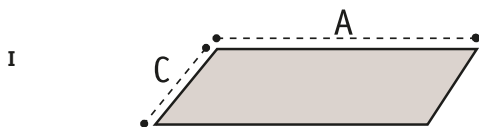
Prewash/preshrunk available if requested, supplement is .

When ordering we require following information:

- ① type I, II, III or IV;
- ② dimensions; please indicate size of finished altar cloth according to "types" hereunder;
- ③ fabric and price per meter of finished altar cloth.

For the price of your finished altar cloth, visit www.quotemyaltarcloth.com

① Types

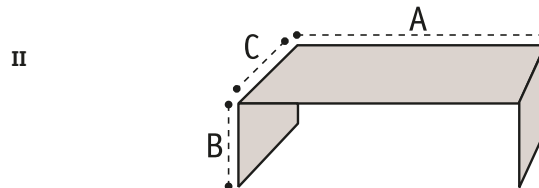


Covering altar mensa only.

Total length = A

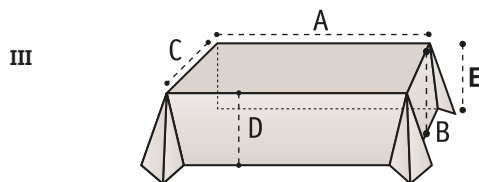
Total depth = C

Covering altar mensa, with side drops.



Total length = $A + 2 \times B$

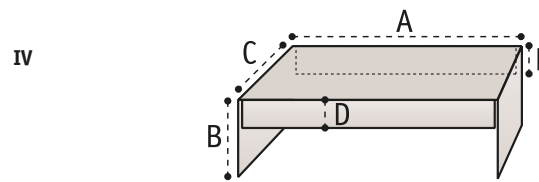
Total depth = C



With square corners (tablecloth style), with front, side and back drops.

Total length = $A + 2 \times B$

Total depth = $C + D + E$



Covering altar mensa, with side drops and shorter front and/or back drop, with seam.

Total length = $A + 2 \times B$

Total depth = $C + D$ or $C + D + E$

C = depth of mensa

D = front side drop

E = short back drop

② Dimensions

A = length of mensa

B = side drops

③ For fabric and price per meter of finished altar cloth, see illustrations p. 60, 61 and 62. Type IV, supplement of 10%.

There is 1 meter minimum charge.



Chiro only available as type I and II.

63-93 Chiro: white jacquard fabric of 100% man-made fibres, with inset woven chiro, wheat and grapes motifs. Wash, lukewarm.

Designed by Hendrik Slabbinck in 1923.

Total depth up to 130 cm, price per meter finished.
Total depth up to 195 cm, price per meter finished; with seam.



63-87 with crosses 2196

2196

Washable altar cloth

Manufactured in **Ravenna**-wash-and-wear fabric, wash, lukewarm, finished with a 4 cm hem.

Please indicate the size of finished altar cloth:

A = length of the mensa;

B = side drops;

C = depth of the mensa, up to 139 cm.

63-87 Price per meter for the finished altar cloth (without embroidered crosses) For total length $A + 2 \times B$

2196 Supplement for 5 embroidered crosses (height 9 cm)

/m

The price per meter is for the completely finished altar cloth, including 4 cm hem. If total depth is more than indicated depth of the fabric: price upon request.

For the price of your finished altar cloth, visit www.quotemyaltarcloth.com



63-38

Altar cloth in blended linen

① Calculate the price of a plain cloth.

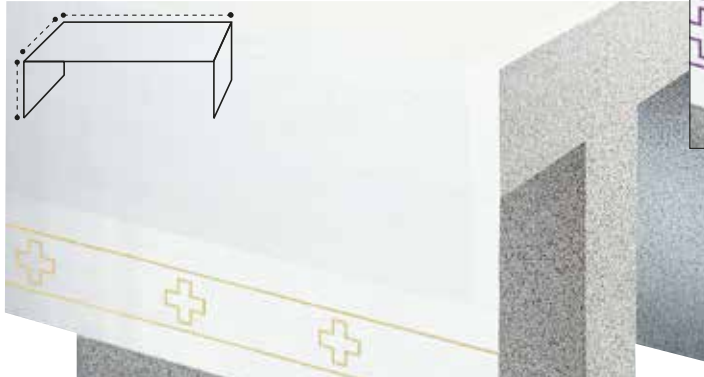
In **Blended Linen**, white fabric of 55% linen and 45% man-made fibres. Easy to launder (wash, lukewarm).

Prewash/preshrunk available if requested, supplement is .

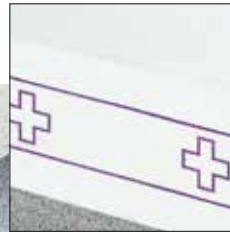
Price per meter, according to total length.

63-38	Total depth up to 102 cm	/m
	Total depth up to 170 cm; no seam	/m
	Total depth up to 204 cm; no seam	/m

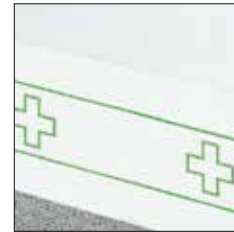
② Options: please add to the price of the altar cloth 63-38, one of these options.



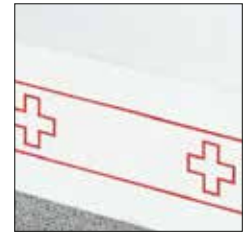
63-5189 (60)



63-5189 (40)



63-5189 (30)



63-5189 (20)

63-5189 With embroidered lines and crosses. Available in 4 colours: gold (60), red (20), green (30) or purple (40). Should your order not specify colour of embroidery, gold (60) will be supplied.

Supplement:

Total depth up to 102 cm

Total depth up to 140 cm (= maximal depth)



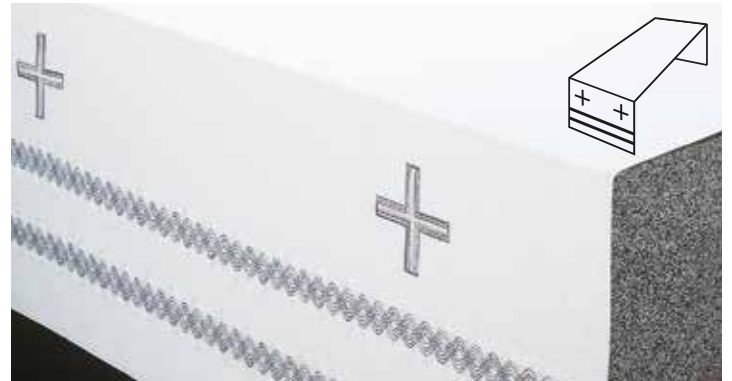
80-3913

Motif **3913** can be embroidered on each altar cloth or alb.

Width 33 cm, height 12 cm. When ordering, please indicate number of motifs.

80-3913 Grains of wheat and vine, price per motif (3 motifs illustrated)

each



63-3134

63-3134 With elegant linear embroidery and crosses on both side drops (B). Minimum height B = 30 cm.

Supplement: Total depth up to 102 cm

Total depth up to 170 cm

Total depth up to 204 cm

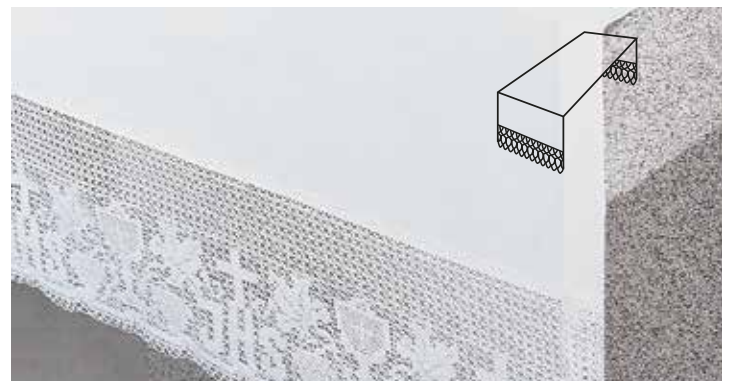


63-38

63-2788

63-2788 Both side drops (B) with lace (h. 25 cm) in man-made fibres, per meter supplement (according 2 times the total depth C)

/m



63-3382

63-3382 Both side drops (B) with lace (ht. 28 cm) of 100% cotton; per meter supplement (according 2 times the total depth C)

/m

5046



5047



Washable sacramental linens

With motifs woven into the material.

3207 In 60% cotton and 40% linen. Wash. With Eucharistic motifs woven into the material.

3500 In **Alpha**-fabric, of 95% cotton and 5% blended linen, with crosses woven into the material. Wash.

With embroidered motifs on purificator, chalice pall and corporal, not on lavabo towel. Easy to launder (wash, lukewarm).

2194 Eucharist motifs (chalice, bread, grapes and wheat) on **Blended Linen**, of 55% linen and 45% man-made fibres.

2195 With cross and open hemstitch in the finest cotton batiste.

2196 With cross on **Ravenna**-fabric, 70% man-made fibres and 30% viscose.

5046 In **Blended linen**, with fleur de lis cross.

5047 In **Blended linen**, with Canterbury cross.

5189 In Blended linen, with gold-coloured cross and lines.

Complete set in gift box containing: purificator, lavabo towel, chalice pall, corporal

	Purificator	Lavabo towel	Chalice pall	Corporal	Gift set
Size	50 x 28 cm	50 x 40 cm	17,5 x 17,5 cm	50 x 50 cm	
2194					
2195					
2196					
3500					
5046					
5047					
5189					
Size	60 x 38 cm	60 x 38 cm	18 x 18 cm	60 x 58 cm	
3207					

The pall should be washed in cold water.



5189



3500



2195



3207



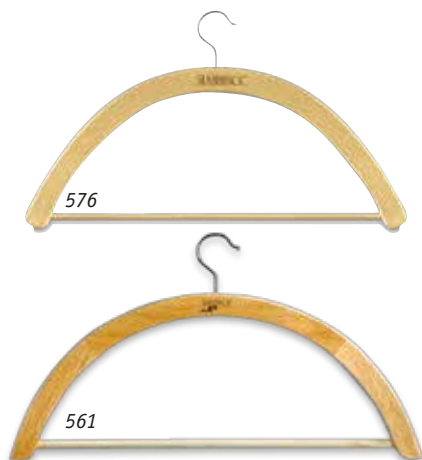
2196



2194



2194



Vestment hanger. Ideal to hang chasuble, dalmatic, cope, humeral veil, stole, lectern cover or superfrontal. With metal hook.

561 Solid wood; 2,3 cm thick, width 59 cm

576 Wood-tone resin material; 1,5 cm thick, width 59 cm, with fixed metal hook



Amice. Fits the neck perfectly.

With velcro in front to adjust size; and embroidered cross in back of neck. Choice of fabrics, see washable fabrics for albs, p. 93.

155 Amice, embroidered cross in neck

With stand-up collar, velcro closure in back. Available in standard size (fits shirt size to 17) and large (fits size 17 to 19). Extra large, price upon request.

If the size is not specified, standard will be supplied. Should your order not specify any preference of fabric, we will supply the amice in **Terlenka**, white.

165 Amice



Rope cincture for albs

- In washable cotton; with hand-made knot; in flax, white, red, green (57-0, 57-1), dark green (157-0, 157-1), purple, blue, gold or black.

Thin cincture (0,9 cm not illustrated).

157-0 Length 375 cm

157-1 Length 205 cm

Standard cincture (1,2 cm).

57-0 Length 375 cm

57-1 Length 205 cm

- In rayon (dry clean); with hand-made tassel. All colours except black.

703-0 Length 375 cm, tassel 12 cm included

703-1 Length 205 cm, tassel 12 cm included



Clergy travel bag. Practical for use as suitcase or shoulder bag, with detachable shoulder strap and strong zipper. A large pocket outside and smaller pockets on the inside.

- Made in strong polyester (1200D).

Open: length 183 cm, width 60 cm, depth 13 cm.

3450 Clergy travel bag, 3 vestments hangers included

- Made in polyester (600D).

Open: length 164 cm, width 60 cm, depth 6 cm.

3722 Clergy travel bag

Travel cover

With two handles, with name card holder.

- Made in polyester, size when open: length 165 cm, width 60 cm; with extra strong zipper and large 25 by 30 cm front pocket.

3465 Clergy travel cover

- Nonwoven fabric, with zipper.

Length 160 cm, width 68 cm.

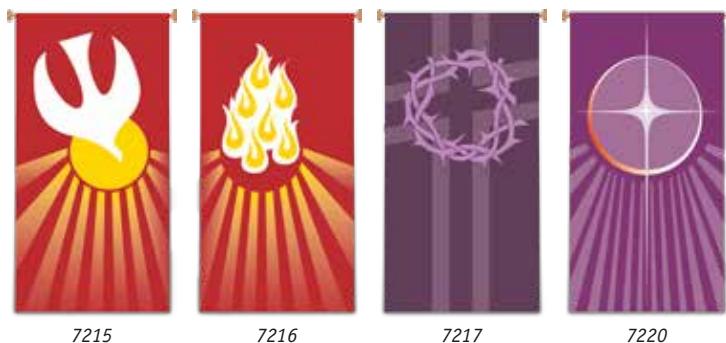
4375 Clergy travel cover

Cover. Protects vestments from dust and dirt.

Solid transparent vinyl, with zipper from top to bottom; all edges finished with ribbons.

2531 Cover; width 84 cm, length 148 cm

2654 As 2531, length 171 cm



Small inside banners 120 by 60 cm

In Raytex DM, 100% man-made fibres. Same finish as inside banners on p. 66-67.

- 7211 Lamb of God
- 7212 Chi, Monogram of Christ
- 7213 Eucharist, Cross and fish
- 7214 Eucharist, wheat and grapes
- 7215 Holy Spirit
- 7216 Flames
- 7217 Lent, crown of thorns
- 7218 Lent, nails and shroud¹⁾
- 7219 Advent, candle¹⁾
- 7220 Advent, star
- 7226 Christmas
- 7229 Christmas

Banner stand

Metal stand, chrome-plated with weighted base. Telescoping shaft, adjustable in height, extends 150 cm to 235 cm, with hook on front

and back, so two banners can be hung at the same time.

5047 Banner stand

In **Pius**, 100% man-made fibres, with woven banding. In beige, red, green or purple.

Chasuble, width 160 cm, length 135 cm. **5111, 5113, 5115, 5117** or **5120**

Overlay stole, style 38.

50-5111, 50-5113, 50-5115, 50-5117 or **50-5120**

Lectern cover; 45 x 180 cm, or custom-made.

62-5111, 62-5113, 62-5115, 62-5117 or **62-5120**

Altar cover; 90 x 190 cm, or custom-made. **64-5111, 64-5113, 64-5115, 64-5117** or **64-5120**

¹⁾ Not illustrated.

Inside banner

The banner creates a warm atmosphere, inspiring peace, quiet and prayer. In Raytex DM, 100% man-made fibres. Size 300 x 100 cm. Finished at top with open hem; with wooden rod, 2 wooden apples and hanging cord. Metal dowel at bottom, incorporated into hem.

7111 Lamb of God

7112 Chiro, Monogram of Christ

7113 Eucharist, bread with Cross and Ichthus (fish)

7114 Eucharist, with wheat design and grapevine

7115 Holy Spirit

7116 Flames

7117 Lent, crown of thorns

7118 Lent, nails and shroud

7119 Advent, candle

7120 Advent, star

7122 Our Lady

7124 Sacrament of wedding

7126 Christmas

7127 Alpha-Omega and wheat

7128 Chalice, host and grapevine

7129 Christmas

7134 Last Supper

7135 Resurrection

7144 Divine Mercy

7148 Chiro, Monogram of Christ

7149 Lamb of God

7150 Flames

7151 Holy Spirit

7152 Chalice and grapevine (not illustrated)

7153 Ears of corn (not illustrated)

7154 Crown of thorns, nails

7155 Crown of thorns, Alpha-Omega

Banner stand

For almost any type of banner or tapestry. Metal stand, completely chrome-plated with weighted base. Telescoping shaft, extends 176 to 450 cm. Telescoping cross arm, extends 70 to 137 cm, with double hook so that a banner can be hung in front and back.

5036 Adjustable in height and width

new

Roll-up banners

In PVC with metal stand.

Height 200 cm, width 85 cm.

Roll-up metal box, easy to transport, with carry case.

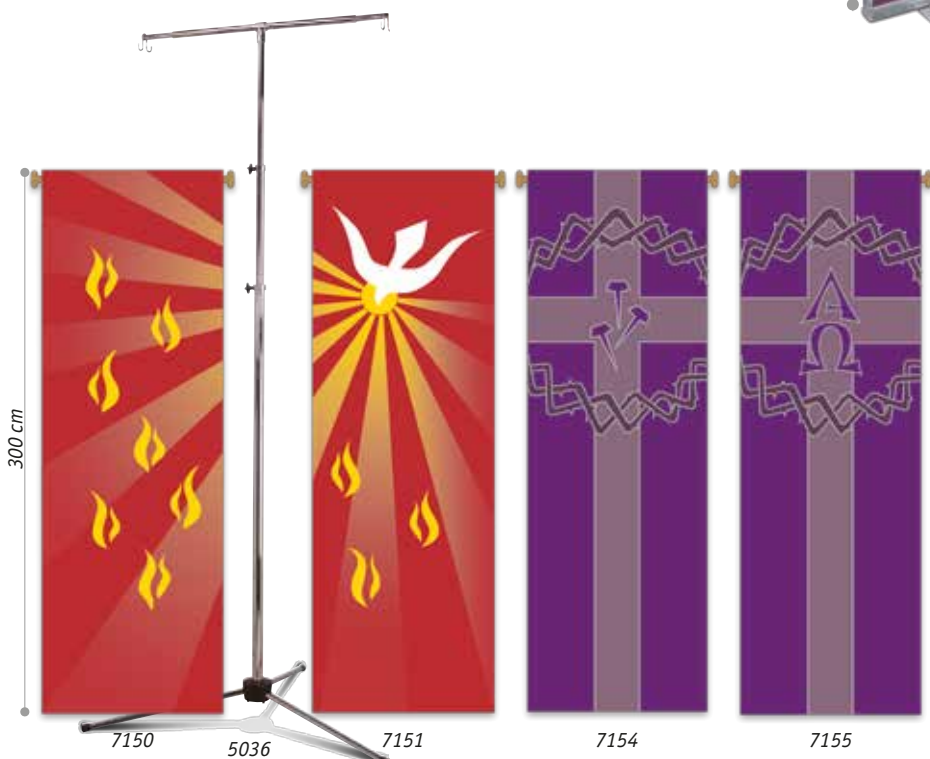
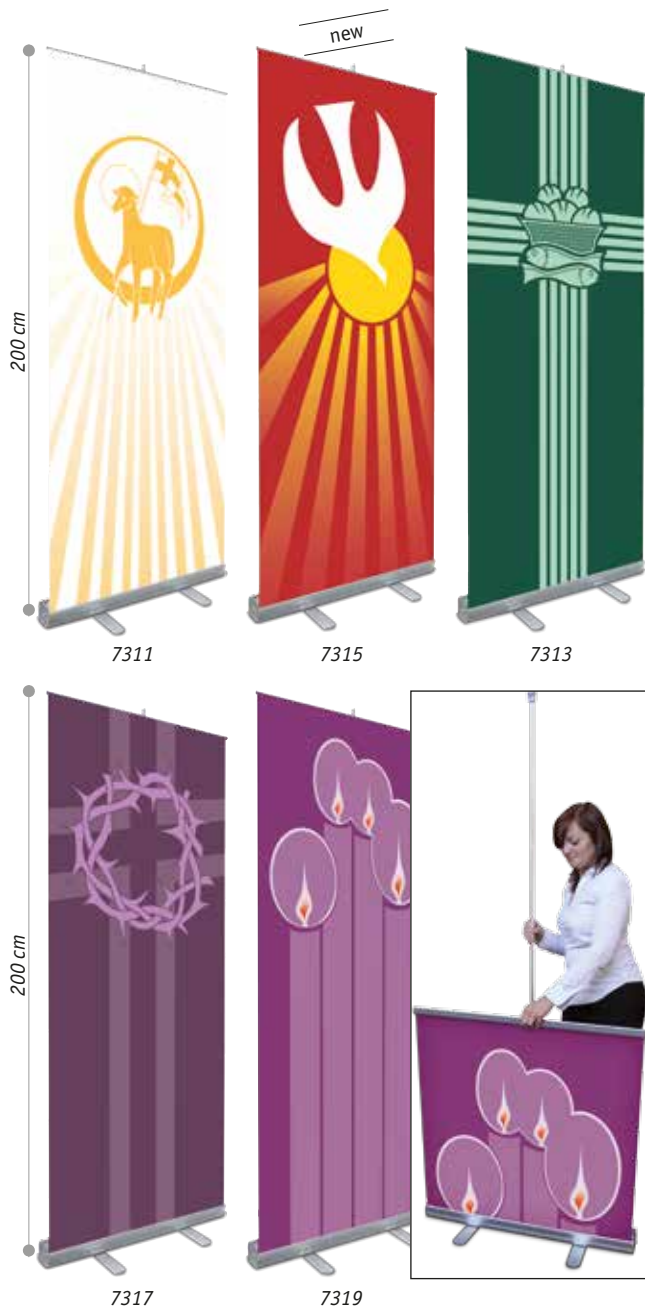
7311 Lamb of God

7315 Pentecost, Holy Spirit

7313 Eucharistic symbol: bread with cross and Ichthus

7317 Lent: crown of thorns

7319 Advent candles



Digitally printed banners can be custom-made from 1 piece with your individualized design. Please supply your complete art-work if possible in a vector file. Price on request.





7144

7135

7134

7111

7112

7117

7118



7148

7149

7124

7126

7129

7119

7120



7127

7128

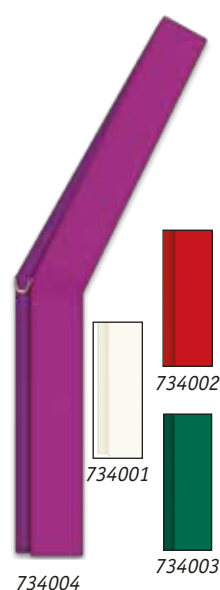
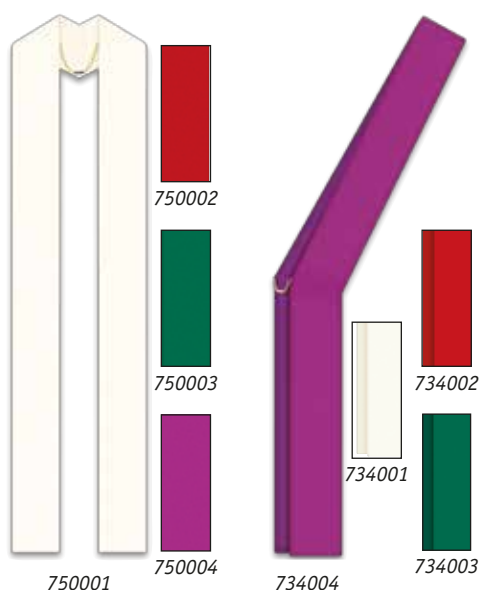
7113

7114

7115

7116

7122



-10%*

* 10% discount for purchase of 1 complete set = 4 chasubles or 4 dalmatics or 4 deacon stoles or 4 overlay stoles, of the same design "Assisi by Slabbinck" (in ecru, red, green and purple colour).

In **Elias**, fabric of 100% man-made fibres.

No custom size nor custom design possible.

Chasuble, orphrey on front and back.

Width 160 cm, length 135 cm; with inside stole.

701021, 701022, 701023 or 701024 With embroidered cross
701031, 701032, 701033 or 701034 With small braid and embroidered cross
701041, 701042, 701043 or 701044 With woven band
701051, 701052, 701053 or 701054 With orphreys

Chasuble, without decoration.

701001, 701002, 701003 or 701004 Plain chasuble
707001, 707002, 707003 or 707004 Plain Dalmatic

Matching:

750001, 750002, 750003 or 750004 Plain overlay stole
734001, 734002, 734003 or 734004 Plain deacon stole

per piece	complete set*
	701029
	701039
	701049
	701059
	701009
	707009
	750009
	734009



In **Elias**, fabric of 100% man-made fibres.

No custom size nor custom design possible.

Chasuble, decoration on front and back, width 160 cm, length 135 cm; with inside stole.

701011, 701012, 701013 or 701014 Chasuble with orphrey

Dalmatic, orphrey on sleeves.
707011, 707012, 707013 or 707014 Dalmatic

Overlay stole, style 25.
750011, 750012, 750013 or 750014 Overlay stole

Deacon stole.
734011, 734012, 734013 or 734014 Deacon stole

per piece	complete set*
	701019
	707019
	750019
	734019

Coat style alb, Off-white

Reference	Length A-B / Chest C 105 cm (regular); 115 cm (large)
711011	140 cm / 105 cm
711021	145 cm / 105 cm
711031	150 cm / 105 cm
711041	155 cm / 105 cm
711051	160 cm / 105 cm
711061	145 cm / 115 cm
711071	150 cm / 115 cm
711081	155 cm / 115 cm

Cassock Black

	Neck	Chest	Length	Sleeve
785015 XS - 70	38 cm	102 cm	147 cm	84 cm
785025 S - 71	41 cm	107 cm	147 cm	84 cm
785035 M - 72	41 cm	112 cm	152 cm	86 cm
785045 L - 73	43 cm	117 cm	157 cm	89 cm
785055 XL - 74	45 cm	122 cm	157 cm	89 cm
785065 XXL - 75	48 cm	127 cm	157 cm	89 cm

Matching cassock cincture, custom-made, available.

-10%*

* 10% discount for purchase of 1 complete set = 4 chasubles or 4 dalmatics or 4 deacon stoles or 4 overlay stoles, of the same design "Assisi by Slabbinck" (in ecru, red, green and purple colour).



4358

Completely gold-plated.

Handmade silver-plated node with grape motif and two emblems; bread and fish motif on one side, on the other side Lamb of God motif.



4359

4358 Chalice, ht. 18,5 cm, cont. 42 cl

4359 Ciborium, ht. 21,5 cm, cont. 300/190 hosts



4372

4370

4371

Completely gold-plated

Cast silver node with bread and fish motif.

4370 Chalice, height 19 cm, cont. 43 cl

4372 Ciborium, height 20 cm, cont. 230/145 hosts

4371 Paten-ciborium, dia. 13,8 cm, height 6,4 cm, cont. 300/190 hosts



2842

Entirely gold-plated, hand-hammered

2842 Chalice, ht. 17,7 cm, cont. 48 cl; node silver-plated, with bread and fish Paten (B)

2843 Matching ciborium, ht. 17,8 cm, cont. 230/150 hosts Matching monstrance 2844 and 2846, p. 78.



2843

Information patens, see p. 73.
The height (ht.) of the ciboria includes the cross on the lid. Capacities (cont.) are given in hosts, dia. 3 cm (1st n°: normal hosts, 2nd n°: thicker hosts).

Classical chalice

- 8075** Classical chalice, ht. 20 cm,
cont. 30 cl
Paten (B)
- 8275** Matching ciborium, ht. 22,5 cm,
cont. 300/190 hosts



8275



8075

Silver-plated, inner cup gold-plated

- 301** Chalice with delicate and
elegant structure, ht. 14,8 cm,
dia. 10 cm, cap. 55 cl
- 302** Paten (A)
- 303** Matching ciborium, ht. 15,8 cm,
cont. 200/125 hosts



303



302

301

Cup in solid silver (925 ‰)

- 9117** Chalice, ht. 19,5 cm, cont. 45 cl;
node with grapevine leaves
and wheat design;
hand-hammered base
- 9117** Paten (B), in solid silver,
partly gold-plated
- 5118** Matching ciborium, ht. 23 cm,
cont. 200/125 hosts
(not illustrated)



9117



9238

Silver-plated with gold-plated inner cup

- 4238** Chalice, illustration
"Lamb of God", silver-plated,
inner cup gold-plated,
ht. 17,7 cm, cont. 68 cl
- 9238** Matching paten, dia. 16 cm

9117

4238

Entirely gold-plated

1058 Chalice, ht. 18,8 cm, cap. 45 cl
Paten (B)

Matching ciborium.

1060 Ciborium, ht. 22 cm,
cont. 450/280 hosts

1059 As, ht. 20,5 cm,
cont. 300/190 hosts



1058



1060

Classical chalice, 19th century finish

4007 Chalice, ht. 16,2 cm, cap. 29 cl
Paten (D)

4204 As 4007, ht. 14,5 cm, cap. 25 cl

4008 Matching ciborium, ht. 20 cm,
cont. 200/125 hosts



4008



4007

Entirely stainless steel; node with bread symbol

5055 Chalice, ht. 16 cm, dia.
cup 11,5 cm, cap. 49 cl

5055 Matching paten, dia. 14,5 cm

5056 Matching ciborium, ht. 18 cm,
cap. 270/165 hosts

5058 Host-box, dia. 8,8 cm, ht. 6 cm,
cap. 130/85 hosts



5055



5058



5056



1826



1825

All polished pewter

1825 Chalice, ht. 15,5 cm, cap. 30 cl

1825 Paten (B)

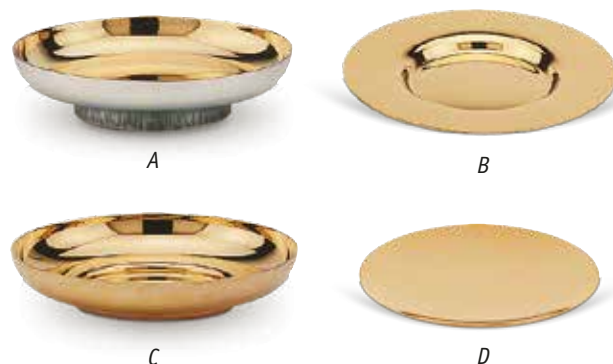
1826 Matching ciborium, ht. 18,5 cm,
cont. 200/125 hosts

Information patens, see p. 73.
The height (ht.) of the ciboria includes the cross on the lid. Capacities (cont.) are given in hosts, dia. 3 cm (1st n°: normal hosts; 2nd n°: thicker hosts).



Case for chalice and paten

- 3620** For chalice, ht. up to 16 cm; and paten;
22 x 20 cm, ht. 19 cm
- 3621** For chalice, ht. up to 18 cm; and paten;
24 x 22 cm, ht. 21,5 cm
- 3622** For chalice, ht. up to 22,5 cm; and paten;
27 x 24 cm, ht. 22 cm



Paten

The price of the chalice does NOT include the paten; the text indicates the suggested paten.

- (A) = bowl paten (dia. 15 cm, cont. 150/100 hosts), ring with texture matching the chalice
- (B) = well paten (dia. 15 cm or as indicated, cont. 30/20 hosts); entirely gold-plated
- (C) = deep paten (dia. 15,5 cm, cont. 150/100 hosts); entirely gold-plated
- (D) = scale paten (dia. 14 cm or as indicated, cont. 25/15 hosts); entirely gold-plated

The height (ht.) of the ciboria includes the cross on the lid. Capacities (cont.) are given in hosts, dia. 3 cm (1st n°: normal hosts, 2nd n°: thicker hosts).



3759



3758



3740

In recycled glass.

- 3758** Chalice, height 23 cm, ø 10,5 cm
- 3759** Paten, height 7 cm, ø 15 cm
- 3740** 2 cruets, ht. 7 cm, cap. 7 cl, with tray 27 x 17 cm



1254



1255



1268

Hand-blown glass, engraved motif.

- 1254** Chalice, height, cap. 65 cl
- 1255** Bowl paten, dia. 14 cm, cont. 150/100 hosts
- 1268** Flagon with stopper, ht. 37 cm, cap. 90 cl



In ceramic, high-grade triple firing at 2300°F (1260°C). Glazed with cobalt blue; inner cup, emblem and trim hand-painted in 12% genuine gold.

- 9701** Chalice, ht. 15,5 cm; inner cup dia. 11,5 cm, cap. 40 cl, with matching paten dia. 18 cm, cont. 100/70 hosts
- 9702** Ciborium, dia. 13 cm, ht. 19 cm, cont. 80/55 hosts
- 9703** Deep paten, dia. 18,5 cm, cont. 300/190 hosts
- 9704** Tray, l. 24,5 cm; with cruets for water and wine, cap. 10 cl



Paten-open ciborium, brass, entirely gold-plated.
8590 With lid, dia. 15,5 cm, 440/275 hosts

Paten-open ciborium, brass, entirely gold-plated.
3086 Paten with large capacity, completely handhammered, dia. 25 cm, total height 8 cm, cont. 1400/875 hosts

Deep paten, brass, completely handhammered and gold-plated.
3299 Dia. 14 cm, cont. 380/240 hosts



3665 Tray in pewter, with dark red velours; for wedding rings, l. 24 cm

3770 Host-paten, stainless steel, 20 x 20 x 5 cm, cont. 400/250 hosts, with Eucharist motif

3780 Paten in "Ictus" fish-shape, hammered and gold-plated 24 carat, length 25,5 cm, cont. 250/160 hosts



Entirely in stainless steel, dia. 16 cm, cont. 320/200 hosts.
2033 Paten-open ciborium, polished inside and out

All pewter, polished, hand-hammered; cont. 250/160 hosts.

4145 Paten-open ciborium, with handle, dia.

4146 Paten-open ciborium, with handle and lid; ht. 8,8 cm; dia. 15 cm

4147 Paten-open ciborium on base, dia. 15,5 cm



Cup stainless steel; linear structured base, brass silver-plated.

3585 Chalice, ht. 16 cm, dia. cup 8 cm, cap. 33 cl

Entirely stainless steel.

3389 Chalice, ht. 12 cm, dia. cup 7,2 cm; cap. 19 cl

3391 Paten (D), dia. 14 cm

3393 Chalice, ht. 12 cm, dia. cup 8,7 cm; cap. 27 cl



For communion under both kinds.

3671 Brass; completely handhammered and gold-plated.

Chalice, ht. 8,8 cm, paten dia. 16 cm, cont. 400/250 hosts

3394 All stainless steel; chalice ht. 12 cm, paten dia. 16 cm, cont. 320/200 hosts

Paten-open ciborium. Gold- or silver-plated, as illustrated.

2037 Structured stainless steel, gold-plated inside, dia. 16 cm, cont. 280/175 hosts

3177 Brass, dia. 15,5 cm, cont. 150/100 hosts



Entirely gold-plated, base silver-plated, with bread and fish motif.

3668 Paten-open ciborium with plexiglass sliding lid, dia. 14 cm, cont. 220/140 hosts

3669 Paten-open ciborium, dia. 17 cm, cont. 500/320 hosts

Information patens, see p. 73.
 The height (ht.) of the ciboria includes the cross on the lid. Capacities (cont.) are given in hosts, dia. 3 cm (1st n°: normal hosts, 2nd n°: thicker hosts).



3477

3477 Round case complete set

Leather-look, ht. 17,5 cm, dia. 13,5 cm, contains:

- chalice (3389), ht. 12 cm, dia. cup 7,2 cm, cap. 19 cl;
- pyx/host box (6254), entirely silver-plated, dia. 8,4 cm, cap. 75/25 hosts;
- 2 glass cruets, with water and wine symbols;
- lavabo-towel 18 x 18 cm;
- corporal 20 x 34 cm.

3613 Compact home Mass Set

Practical bag; length 45 x width 36 cm x depth 9 cm; with extra pockets inside and out; with shoulder strap.

Cover contains:

- chalice ht. 12 cm, cap. 19 cl, entirely gold-plated;
- pyx dia. 8,4 cm, 75/25 hosts;
- altar cross ht. 15 cm;
- 2 candle holders with 2 red acrylic holders with 4 nightlight holders;
- tray, stainless steel with 2 glass cruets with water and wine symbols;
- reversible pocket-size stole white/purple, 5 x 73 cm, with metallic gold fringe.

3388 Complete home Mass Set

Solid case, made of ABS, with alu-frame, 50 x 35 cm, height 19 cm, contains:

- chalice (3393), ht. 12 cm, cap. 27 cl and paten, entirely stainless steel, dia. 14 cm;
- pyx, entirely silver-plated, dia. 8,4 cm, cont. 75/25 hosts;
- altar cross, ht. 15 cm;
- 2 candlesticks with 2 nightlight holders in red plexiglass, with 4 p. "nightlight";
- stainless steel tray with 2 glass cruets, with water and wine symbols;
- lavabo-towel, 18 x 18 cm;
- corporal, 20 x 34 cm;
- reversible pocket stole white/purple, 5 x 73 cm, with metallic gold fringe.

4349 Adjustable lectern

In wood, length 34 cm, height 24 cm. Easily portable in Home Mass Set.

Folds flat for storage.



4349

4349

Capacities (cont.) are given in hosts, dia. 3 cm (1st n°: normal hosts, 2nd n°: thicker hosts).



3612

3612 Compact home Mass Set

Practical bag; length 45 x width 36 cm x depth 9 cm; with extra pockets inside and out; with shoulder strap. Cover contains:

- stainless steel chalice (3389), ht. 12 cm, cap. 19 cl;
- pyx, dia. 8,4 cm, 75/25 hosts;
- altar cross ht. 15 cm;
- 2 candle holders with 2 red acrylic holders with 4 nightlight holders;
- tray, stainless steel with 2 glass cruets with water and wine symbols;
- reversible pocket-size stole white/purple, 5 x 73 cm, with metallic gold fringe.



3613



3388



Pyxes

For carrying Holy Communion.

- 3235** Dia. 4,3 cm, cont. 9/5 hosts
3250 Dia. 4,3 cm, cont. 9/5 hosts
3251 Dia. 5,6 cm, cont. 24/8 hosts
3252 Dia. 5,6 cm, cont. 24/8 hosts
3254 Dia. 8,4 cm, cont. 75/25 hosts
3255 Dia. 8,4 cm, cont. 75/25 hosts

- 3265** Dia. 4,3 cm, cont. 9/5 hosts
3275 Dia. 4,3 cm, cont. 9/5 hosts
3278 Dia. 5,6 cm, cont. 24/8 hosts
3292 Dia. 4,3 cm, cont. 15/6 hosts
6254 Dia. 8,4 cm, cont. 75/25 hosts



Case

Leather-look.

3365 8 x 8 cm

Genuine leather.

3350 For pyxes up to dia. 5 cm

3353 For pyxes up to dia. 10 cm

Genuine leather, with cord.

3346 For pyxes up to dia. 6 cm

3362 For pyxes up to dia. 8,5 cm



Host box-paten

Entirely pewter, dia. 9 cm, cont. 75/25 hosts.

4160 Host box-paten



Reservation oilstock.

3441 Case, ht. 22,5 cm, l. 22 cm, depth 9 cm, with 3 ampullae with stopper, ht. 18 cm, cap. 20 cl

3443 Case, ht. 37 cm, l. 34,5 cm, depth 13 cm, with 3 ampullae with stopper, ht. 32 cm, cap. 1 liter

Individual ampullae, hand-blown glass, with stopper.

3535 INF), 3536 (CAT) or 3537 (CHR), cap. 20 cl

3525 (INF), 3526 (CAT) or 3527 (CHR), cap. 1 liter

Capacities (cont.) are given in hosts, dia. 3 cm (1st n°: normal hosts, 2nd n°: thicker hosts).



Ampullae for oilstock

With screw-cap, symbol of oil lamp, cap silver-plated.

5130 (INF), **5131** (CAT) or

5132 (CHR), with ring, ht. 2,5 cm, cont. 1 cl

5134 Triple oilstock, ht. 5,4 cm

5103 Ht. 1 cm, cont. 1 cl, dia. 5 cm, INF

5104 (INF), **5105** (CAT) or

5106 (CHR) Height 2 cm, cont. 2 cl, dia. 5 cm

unit price

unit price

Genuine leather case

3344 For triple oilstock 5134

3345 For oilstock 5130, 5131 or 5132

3346 For oilstock 5104, 5105 or 5106

3350 For oilstock 5103



Ampullae for oilstock. With screw-cap, inner cup in glass, total ht. (cross included) 11,5 cm, cont. 5 cl. INF, CAT or CHR engraved on base and lid.

2827 (INF), **2828** (CHR) or **2829** (CAT)

unit price

Available separately (not included in the price of the ampullae).

2830 Case for two ampullae

2831 Case for three ampullae

2832 for one ampullae



Reservation oilstock

2444 Case, 20 x 9 cm, ht. 3,5 cm, with oilstocks 5104, 5105 and 5106, ht. 2 cm, dia. 5 cm, cont. 2 cl, with spoon

2445 Case, 20 x 9 cm, ht. 8,7 cm, with oilstocks INF, CAT and CHR, ht. 7 cm, dia. 5 cm, cont. 8 cl, with spoon

3470 Round synthetic case, ht. 13 cm, dia. 7 cm

Choice of glass cruets, ht. 12 cm, cont. 12,5 cl, engraved motif:

INF(**3471**), CAT(**3472**) or CHR(**3473**)

unit price

3480 Set of round synthetic case, ht. 13 cm, dia. 12 cm with cruets 3471, 3472 and 3473



Sick-call sets

3309 Complete set

Contains genuine leather case, 8 x 15 cm, with oilstock; pyx, cont. 9/5 hosts; sprinkler; reversible pocket stole, 5 x 73 cm; small linen, 18 x 18 cm.



3316 Complete set

Contains genuine leather case, 7 x 12 cm, with oilstock; pyx, cont. 9/5 hosts; reversible stole, 5 x 73 cm; small linen, 18 x 18 cm.



4424 Complete set

Contains PVC case with grip, 22 x 15 cm, ht. 10,5 cm, with appropriate inner division, containing cross with two candlesticks; candles; cotton wool container; oilstock; pyx, cont. 18/9 hosts; sprinkler (4350); reversible pocket stole, 5 x 73 cm; small linen 18 x 18 cm and small corporal 20 x 34 cm.

Pocket sprinkler; nickel-plated brass.

4350 Sprinkler, length 11,5 cm

2366 As 4350, length 19 cm



372



Gothic French monstrance with removable luna for hosts with dia. up to 6 cm. Representation of Our Lady of Lourdes, the Sacred Heart and St.-Joseph, as well as Holy Spirit symbol. Height 62,5 cm.
372 Monstrance with matching case



2846



2844

2844 Ht. 40 cm, hand-hammered, entirely gold-plated; node silver-plated, with bread and fish symbols, removable luna for hosts with dia. up to 9 cm
2846 As 2844, ht. 35 cm, removable luna for hosts with dia. up to 14 cm



4200



3061



3058



8504

Gold- or silver-plated as illustrated, for hosts with dia. up to 7 cm.
4200 Height 14 cm, with structure; with fixed luna
3058 Height 13,5 cm, gold-plated; luna on base
3061 As 3058, silver-plated
8504 Luna holder, completely gold-plated. Adjustable base; height 23 cm



8407

8407 Baroque monstrance, gold-plated and silver-plated; height 38 cm; with removable luna for hosts with dia. up to 7 cm



9236



2481

9236 Tassilo monstrance, ht. 30 cm, gold- and silver-plated; removable luna for hosts with dia. up to 7 cm. After an original from the era of Duke Tassilo of Bavaria (8th century)
2481 Ht. 38,2 cm, cross in epoxy enamel; with removable luna for hosts with dia. up to 6 cm



4453



4451



4452



4454

Altar bell, handle in cast bronze, bells in cast brass, polished.
4451 One bell, height 13 cm
4452 Two bells
4453 Three bells
4454 Four bells



5705

Tray in stainless steel, 32 x 24 cm, with glass cruets with handle, with printed water or wine symbol, in stainless steel holder.

5705 Tray with 2 cruets (1969) and (1970), height 9,5 cm cont. 15 cl



3890

Tray in stainless steel, length 26 cm, with glass cruets with handle, in stainless steel holder, relief engraved with wine or water motif. Stainless steel lid with hinge and wine or water motif on lid.

3890 Tray with 2 cruets, ht. 7,5 cm, cont. 11 cl



5760

Tray in stainless steel satinized, 32 x 24 cm, with stainless steel cruets with handle and lid with hinge, wine or water motif on lid.

5760 Tray with 2 cruets, ht. 8 cm, cont. 20 cl



1372

Tray in stainless steel, length 26 cm, with glass cruets with handle, relief engraved with wine or water motif, in stainless steel holder.

1372 Tray with 2 cruets, ht. 7,5 cm, cont. 11 cl



4224

Tray in stainless steel, length 26 cm, with glass cruets with handle, in stainless steel holder, relief engraved with wine or water motif, one lid with cross silver-plated and one gold-plated.

4224 Tray with 2 cruets, ht. 7,5 cm, cont. 11 cl



3761

Tray in stainless steel, length 24 cm, with glass cruets with handle, relief engraved with wine or water motif, in stainless steel holder.

3761 Tray with 2 cruets, ht. 7,5 cm, cont. 11 cl



1275

1274

Glass cruets, with handle, ht. 7,5 cm, cont. 11 cl; relief engraved with wine or water motif.

1275 Glass cruet with wine motif

\$ 20.25

1274 Glass cruet with water motif

\$ 20.25



3254

Gold-plated tray, length 23,5 cm, with glass cruets with water or wine motifs; with holder.

3254 With glass cruets (1274 and 1275), one lid with cross and one gold-plated

3700 With glass cruets (1969 and 1970)



3666

Tray in stainless steel, gold-plated handles, 38 x 24 cm, glass cruets with water or wine symbols.

3666 With glass cruets with plexiglass handle, ht. 11 cm, cap. 30 cl; with lavabo for finger cleaning

4119 With stainless steel cruets ht. 5 cm cap. 10 cl



1970

1969

Glass cruets, with handle, ht. 9,5 cm, cont 15 cl; with water or wine symbol.

1969 Glass cruet with wine symbol

1970 Glass cruet with water symbol



3700



4119



Candlestick, altar cross, sanctuary lamp

In brass, polished and lacquered (no maintenance).

3072 Candlestick, dia. 13 cm, height 15 cm

3075 Candlestick, dia. 13 cm, height 22 cm

3080 Candlestick, dia. 13 cm, height 9 cm

3081 Altar cross, height 37 cm

3083 Sanctuary lamp, with glass 4520

3950 Candlestick, ht. 30 cm, glas ø 12 cm, candle supported by a coiled spring, pushing the candle up

1251 Set of 8 candles for candlestick 3950

Height 20 cm, dia. 8 cm, red.

4420 Sanctuary lamp glass, *straight* (not illustrated)

4520 Sanctuary lamp glass, *tulip form*



In brass, polished and lacquered (no maintenance).

3946 Sanctuary lamp, dia. 13 cm, ht. 9,5 cm, with red glass, dia. 8 cm, height 16 cm

3947 Altar candlestick, dia. 13 cm, ht. 9,5 cm, with acrylic glass, dia. 8 cm, height 15 cm

Silicone LED candle not included. Regular candles or Sanctuary lamp oil can also be used.

For nursing homes, hospitals and other areas where open flames are prohibited.

Ivory-coloured silicone, dia. 5,4 cm, height 11,5 cm.

3981 LED candle with AA batteries (4 pcs. included); with switch

Oil candle with golden cross, burns with lamp oil.

4000 Height 40 cm, dia. 8 cm



Processional torches

Torch in lacquered brass (no maintenance); candle supported by a coiled spring, pushing the candle up.

Height 103 cm, standard supplied with acrylic globe 3699.

3591 Torch, brass nickel-plated

3592 Set of 4 torches 3591 and stand 1932

3708 Torch, brass polished

3709 Set of 4 torches 3708 and stand 1932



1931 Stand for 1 processional torch

1932 Stand for 4 processional torches

3699 Separate acrylic globe for torch, dia. 8 cm, height 15 cm

1810 Separate glass globe tulip-shaped for torch, dia. base 7,5 cm, largest dia. 11,5 cm, height 14,5 cm

Candles, length 12 cm, dia. 3 cm.

1252 7 pieces

1526 25 pieces

1527 240 pieces



2663



7601



7751



7753



7750



7752



2681

Cast brass candlesticks

Polished and lacquered (no maintenance).

2663 Candlestick, ht. 60 cm

2681 Candlestick, ht. 60 cm

7601 Candlestick, ht. 100 cm

7600 As 7601, ht. 80 cm

7602 As 7601, paschal candlestick, ht. 125 cm

7603 Adjustable lectern (round base), matching candlesticks 7600, 7601 and 7602

7750 Candlestick, ht. 80 cm

7751 As 7750, candlestick, ht. 100 cm

7752 As 7750, candlestick, ht. 125 cm

7753 Adjustable lectern, matching candlesticks 7750, 7751 and 7752



4349



9500



5019



5005

Lectern stand

• In plexiglass, with Alpha and Omega symbols on front.

5015 45 x 26 cm, height 8 cm, 6 mm thick (not illustrated)

5019 45 x 26 cm, height 16 cm, 6 mm thick

• In plexiglass, without design.

5001 45 x 26 cm, height 16 cm, 8 mm thick (not illustrated)

5005 45 x 26 cm, height 8 cm, 8 mm thick

• In oak, 41 x 31 cm.

9500 Adjustable tilt up to 45°

• In wood, 34 x 24 cm.

4349 Adjustable tilt, fits into the home Mass case
Folds flat for storage



4930

new



4931

5912



5910

Alms bag

With handles in brass with wood and pouch in velvet. In blue or red velvet. Height 22 cm, total length handles 38 cm.

4930 Alms bag, red

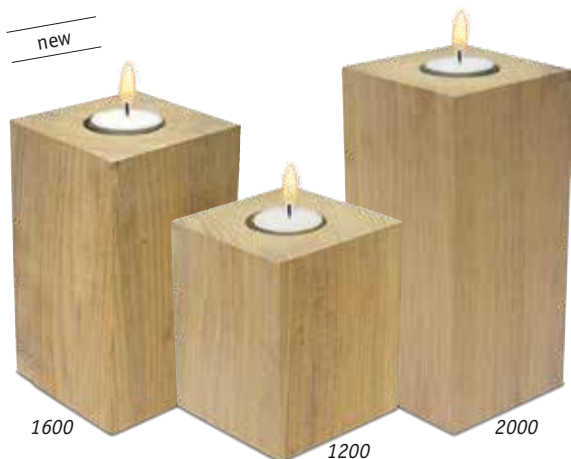
4931 Alms bag, blue

Flowerstand

For paschal candlestick, in plexiglass.

5910 Overall dia. 20 cm, for paschal candle up to dia. 9 cm

5912 As 5910, for paschal candle up to dia. 11 cm



Low wooden candlestick

With protective varnish layer.

Fire-resistant metal holder for tealight included.

1200 Candlestick 9,3 x 9,3 x 12 cm height

1600 Candlestick 9,3 x 9,3 x 16 cm height

2000 Candlestick 9,3 x 9,3 x 20 cm height



Wooden creations in maple

3800 Paten (B), dia. 16, 8 cm, cap. 30/20 hosts

3802 Chalice, inner cup gold-plated, ht. 17,3 cm, cap. 45 cl

3804 Ciborium, ht. 22 cm, cont. 450/280 hosts

3805 Monstrance, ht. 42,5 cm, with removable lunette

3829 Paten-open ciborium, dia.18 cm, cont. 300/180 hosts



Slabbinck works with craft workshops for the creation for your lectern or altar, as well as candlesticks or statues in wood.

All items are manufactured with the best quality care, according to your wishes what model, size and finish is concerned.

New products as well as restorations are finished perfectly.

Our experienced designer makes a digital sketch based on your concrete information, so that the project takes shape before starting the production.

Most items are custom-made. A standard price is not always available.

So do not hesitate to contact us for more information.

Adjustable lectern in walnut wood.
Height 110 cm (max. height 130 cm), base 40 cm.
Top 45 x 35 cm.

16000 Adjustable lectern

26000 Adjustable lectern

Baptismal font, inner cup in plastic, support in walnut wood.

Total height 92 cm, dia. base 32 cm, dia. 34 cm.

28000 Baptismal font

Folding lectern in ash wood.
Height 116 cm, width 40 cm. Top 48 x 40 cm.

18000 Folding lectern

Folding altar in ash wood.
Height 93 cm, width 54 cm. Mensa 150 x 70 cm.

38000 Folding altar

Custom-made: **price on request.**

Baptismal font

2005 Baptismal font with lid, dia. 39 cm.
Total height, including cross 28 cm.
Base dia. 18 cm

7609 Lid only for baptismal font, arches with "imperial orb" in brass, 7 oak slats.
Dia. 40 cm, height 42 cm.
Customizing possible

2329 Support for baptismal font in light coloured beech wood, height 84 cm

2330 Support for baptismal font in dark coloured beech wood, height 84 cm





Censer with inner cup, boat and spoon are included in the price.

2614 With 1 chain; height 17 cm, dia. 12 cm

2615 As 2614, nickel-plated

4355 With 4 chains, complet brass, height 20 cm, dia. 13,5 cm

1021 With 4 chains, brass; height 24 cm

3906 With 4 chains, nickel-plated; height 25,5 cm, dia. 12 cm

3907 As 3906, brass

2639 With 4 chains, nickel-plated; height 20 cm, dia. 9 cm



Tabernacle

4125 With fish-, loaf- and wheat symbol, ht. 34,5 cm, w. 30,5 cm, d. 23,5 cm, inside ht. 28,5 cm

4175 With grapes, wheat and cross symbol, finished with fire enamel, ht. 35 cm, w. 26 cm, d. 24 cm, inside ht. 28 cm

5533 Outside finish in bronze coloured and patina polyester; with fish- and loaf symbol; ht. 24 cm, w. 32 cm, d. 23,5 cm, inside ht. 18 cm

5590 With cross motif, completely bronze coloured, ht. 34 cm, width 22 cm, depth 24 cm, inside ht. 26,5 cm



3698 Complete set: Holy Water vat (3693), sprinkler (3695), censer with boat and spoon (3907) and support, ht. 113 cm (1612). In brass, polished and lacquered (no maintenance)

3697 Complete set: Holy Water vat (3694), sprinkler (3696), censer with boat and spoon (3906) and support, ht. 113 cm (1613). In brass, nickel-plated

Support 1612 - support 1613



Holy Water vat

Brass, with removable innercup; polished and lacquered (no maintenance).

2612 Height 13 cm, dia. 12 cm

2613 As 2612, nickel-plated

3693 Height 18 cm, dia. 22,5 cm

3694 As 3693, nickel-plated

4111 Holy Water vat, nickel-plated, ht. 12 cm, dia. 11,5 cm

Sprinkler in brass.

2365 Length 20 cm

2364 As 2365, nickel-plated

3695 Length 30 cm, with wooden handle

3696 As 3695, nickel-plated



1501



3684

3685

3683



3427

3429



7018

3429



3421

3425



7048

7019

Electric heater for charcoal

1501 With thermostat, 220V - 500W, dia.8 cm, casing in stainless steel

Combination package

This package contains 5 charcoal tablets and a bag of incense for 5 services. Ideal for taking on displacement, for irregular use or to try a type of incense. Box, ht. 8 cm

per unit

3683 Incense "Pontifical"

3684 Incense "Mirre"

3685 Natural incense

Charcoal

The given burning time is approximate and depends on the conditions (windy, humidity, weather etc.).

3429 Charcoal pliers, length 11 cm, in stainless steel

7018 Dia. 33 mm x 13 mm; box with 100 tablets, per 10 pcs. packed in aluminum. Burn time 55 to 65 minutes

3427 Dia. 33 mm x 12 mm; box with 90 tablets, per 5 pcs. Vacuum packed in aluminum. Ultrafast and complete glow. Burn time 45 to 55 minutes

Incense

Box with 500 gram.

3421 Sifting: mixed grains

Box with 300 gram.

3425 Lucas: mixed pink grains

Box with 500 gram.

7019 Pontifical: mixed grains

7048 Mirre: mixed fine grains

Candle stick

In brass, polished and lacquered (no maintenance).

3072 Candle stick, dia. 13 cm, ht. 15 cm

3080 Candle stick, dia. 13 cm, h. 9 cm



3080



3072



2646



2645

Small censer in brass

With strong removable bowl, dia. 7 cm.

2645 In brass, ht. 12,5 cm

2646 In brass, nickel-plated, ht. 13,5 cm



6000

Exclusive, valuable statue.

6000 Statue, Our Lady of Offering, high relief, height 29,5 cm



1724



8014



1340



3020



4062



4064



new

4465



4068

Dry sand cast bronze creation.

- 1426** Emmaus Disciples, height 10 cm
- 1674** Candle holder, with symbols of baptism, confirmation, wedding and Eucharist, dia. 14 cm
- 1704** Matrimonial cross, 11,5 x 11,5 cm
- 1723** Baptism cross, 11,5 x 11,5 cm
- 1724** Cross, Risen Christ, height 24 cm
- 4062** Pastoral cross, height 29 cm
- 4126** As 4062, ht. 36 cm (not illustrated)
- 4064** Pastoral altar cross, height 26 cm
- 4068** Candle holder, dia. 13,5 cm
- 4334** Matrimonial cross, silver-plated 7 x 7 cm
- 4425** 25 years, silver colour, 7 x 7 cm
- 4450** 50 years, bronze colour, 7 x 7 cm
- 8014** Holy Family, half relief, height 22 cm

Zinc, bronze colour

- 1452** Cross, height 9 cm
- 1453** Cross, height 10 cm

Brass

- 1340** Cross, height 14 cm, width 9,5 cm
- 3020** Cross, 30 cm x 20 cm, matt finish
- 4465** Altar cross (recumbent), length 24 cm



1723



1426



1704



1452



1453



4450



4425



4334



1674



Hand-painted in El Salvador

- Colourful wooden cross.

3761 Ark of Noah, height 12 cm

3762 As 3761, height 20 cm (not illustrated)

3764 "Good Shepherd", height 20 cm

3763 As 3764, ht. 15 cm (not illustrated)

3876 As 3763, ht. 45 cm (not illustrated)

3765 Risen Christ and Holy Spirit, ht. 15 cm

3766 As 3765, ht. 20 cm (not illustrated)

3877 Jesus with the children, height 20 cm

3878 As 3877, height 15 cm (not illustrated)

• Wooden pen holder with coloured images: Christmas, Easter (Risen Christ), Shepherd and Noah's Ark.

3880 Height 8 cm, depth 6 cm



5422

Small Stations of the Cross

3150 Silver-plated metal, mounted on wooden block, set of 15 stations; 18 x 18 cm



5429



5425



5499



5409



5420



5411



VII 5418

Station of the Cross of Westerwald clay

Handcrafted of white Westerwald clay, high grade firing at 1250°C (2300°F). Set of 14 stations*.

Height 23,5 cm, width 14 cm.

5422 Polychrome finish

Height 19 cm, width 13,5 cm.

5425 Glazed with cobalt blue and gold colours

5429 Glazed with chestnut and gold colours

Stations of the Cross

In cast polyester. Price for set of 14 stations, small cross with number of station included.

Stations of the cross for indoor and outdoor use, please specify when ordering.

The height quoted is the average cross height, not figure height.

Height of cross between 18 and 68 cm (station I, height of cross 68 cm and II, height of cross 68 cm).

5499 Polychrome finish

Height of cross between 30 and 42 cm.

5411 Silver colour

5413 Bronze colour (not illustrated)

5415 Polychrome finish

Height of cross between 23 and 34 cm.

5409 Wood colour

5418 Bronze colour

5419 Silver colour (not illustrated)

5420 Polychrome finish

* Price of 15th station (Risen Christ) is 1/4 of the complete set.



Baptism

- 121** Scapular, 6,6 cm
199 Baptismal shell, gold-plated, l. 14,2 cm
2313 Baptismal shell, silver-plated, l.
4005 Tray in pewter, l. 24 cm, with ampullae 5105 (CAT) and 5106 (CHR)
3682 Baptismal shell, of white Westerwald clay, inside glazed finishing

Baptismal shell can also be personalized as memorial cross 2134.



For baptism or wedding

Heart in walnut wood.

- 4357** Height 12 cm, width 14 cm
 Can also be personalized as memorial cross 2134.



Memorial cross, respect for the deceased

The name of the beloved is hand written on the cross. The cross is hung on a panel so the community will remember the beloved. During a yearly memorial ceremony, the cross is presented to the family.

- 2134** Wooden cross, length 13 cm, 1,5 cm thick
4180 Cross in polyester, length 11 cm, 1 cm thick



Matrimonial cross

Metal, height 15 cm.

- 5700** Bronze coloured
5725 25 years, silver coloured, with patina
5750 50 years, brass coloured



Wooden cross

- 2651** With silver-plated corpus, height 25 cm, width 14,5 cm
4129 Olive wood, with carved corpus, height 13 cm width 8 cm
4132 Olive wood, height 25 cm, width 15 cm
4133 Olive wood, with yellow copper corpus, height 24,5 cm, width 14 cm



Wooden prayer-dice

A playful invitation to prayer; throwing the dice suggests the prayer for a meal. Cube 5,5 cm, in wood.

- 8223** English
 Also available in Dutch (8221), French (8222), German (8224), Icelandic (8246), Italian (8225), Polish (8244), Portuguese (8227) and Spanish (8226).
 The ideal gift finish for the prayer-dice (not included in the price of the prayer-dice).
8250 Wooden giftbox, 9,4 x 8 cm, height 7,2 cm



Cross, pendants

• With leather cord.

- 1600** Pendant in stainless steel with cross motif, patinated, ht. 4 cm, ø 3,5 cm
3729 Dove of Peace, silver-plated (oxidized), height 4,5 cm
3730 Cross, fish-and-loaf symbol, silver-plated (oxidized), ht. 6 cm
3871 Cross, Dove of Peace carved in olive wood, ht. 5 cm
3873 Dove of Peace, olive wood, height 3,5 cm
3875 "Tau" cross, olive wood, height 3,5 cm
4100 Deacon cross, olive wood, height 5 cm
4127 Cross, olive wood, height 6 cm
4128 Cross, olive wood, height 7 cm
5177 Cross, Ictus motif, dry sand cast bronze, height 3 cm

• With synthetic cord.

- 1457** Dove of Peace, zinc, bronze colour, height 2,5 cm
1458 "Tau" cross, zinc, bronze colour, height 2,5 cm
1459 "Tau" cross, zinc, bronze colour, height 3 cm
4613 Cross, wood, height 11,8 cm
4625 Cross, wood, height 9 cm
5612 Cross, wood, height 7 cm
8660 Cross, silver patina, height 5 cm

• With chain.

- 3948** Cross, silver colour, height 7,5 cm



Pins

- 3432** Pin for deacon with butterfly clasp (B1).
 Logo in solid silver 925 ‰;
 closure silver plated
4658 Deacon cross, ht. 1,3 cm, silver shiny,
 closing with small screw
4653 Priest cross (Greek) with
 screw closure, ht. 1,5 cm
4633 Priest cross (Latin cross) with
 screw closure, ht. 1,5 cm

Medals

Front Sacred Heart, reverse Our Lady with Child. Silver coloured.

- 15** Dia. 1,3 cm
18 Dia. 1,8 cm

Keychain

Nickel-plated, dia 3 cm. The keychain has the image S.O.S. on the back. This is the international logo indicating that a priest is required in an accident.

- 2300** Sacred Heart
2301 St. Christopher
2302 Dove of peace
2303 Our Lady with Child
2304 Guardian angel
2317 Holy Spirit



Rosary

- 8019** Rosary, white artificial pearl beads
 length 43 cm
4016 Rosary, red brown wooden beads, l. 43 cm
9138 Rosary, hematite beads, length 50 cm
3874 Rosary, olive wood, 5 cm

Small icon

- Reproduction, with support, 6,7 x 9,3 cm.
7713 Perpetual Help
7719 Holy Family
 • Reproduction, with support, 9,5 x 14 cm.
7722 Perpetual Help
7728 Holy Family

Christmas crib

In synthetic resin.

Statues, height 12 cm, Christmas crib 20 cm.

Christmas crib with Angel, Three Kings, Hl. Family, shepherd with sheep, ox and donkey.

6564 Christmas crib

new



6564

Christmas crib

In synthetic resin. Three separate pieces.

Height 22,5 cm, width each 10 cm, depth 4,5 cm.

6599 Christmas crib

new



6599

Holy Family

In synthetic resin. Two separate statues.

Height 19,5 cm.

1217 Holy Family

new



1217

Christmas crib for children

In synthetic resin. Ideal as gift for children.

Height 23,5 cm, width 16,5 cm, depth 10,5 cm.

With integrated LED light (front, not visible).

Two Button Cell Batteries (LR44) are included.

6638 Christmas crib for children

new



6638

Christmas crib

Figures with adapted clothing: all statues are made of wood with moveable limbs, hands and heads in polyester, polychrome finish.
The wooden mannequins now have an extra stabilizer (tube mounted on the metal base). If you previously purchased the Christmas crib, please contact your local dealer. We will be happy to send you the tubes at no charge.

Special offer

Complete Christmas set (without animals).

2151 With adapted clothing

2152 Without clothing

2153 Clothes only

The complete Christmas set contains:

2141 St.-Joseph, height 95 cm

2142 Our Lady

2143 Infant Jesus

2144 Crib

2145 King Melchior

2146 King Balthazar

2147 King Gaspar

2148 Young shepherd

2149 Old shepherd

2150 Shepherdess

2154 Youngster, height 65 cm

Animals available at additional charge.

1028 Lamb, head right, length 26 cm

1029 Lamb, grazing, length 24,5 cm

1030 Lamb, looking up, length 27 cm

1039 Ram, length 39 cm

1040 Camel, standing, length 110 cm

1046 Sheep, lying down, length 41 cm

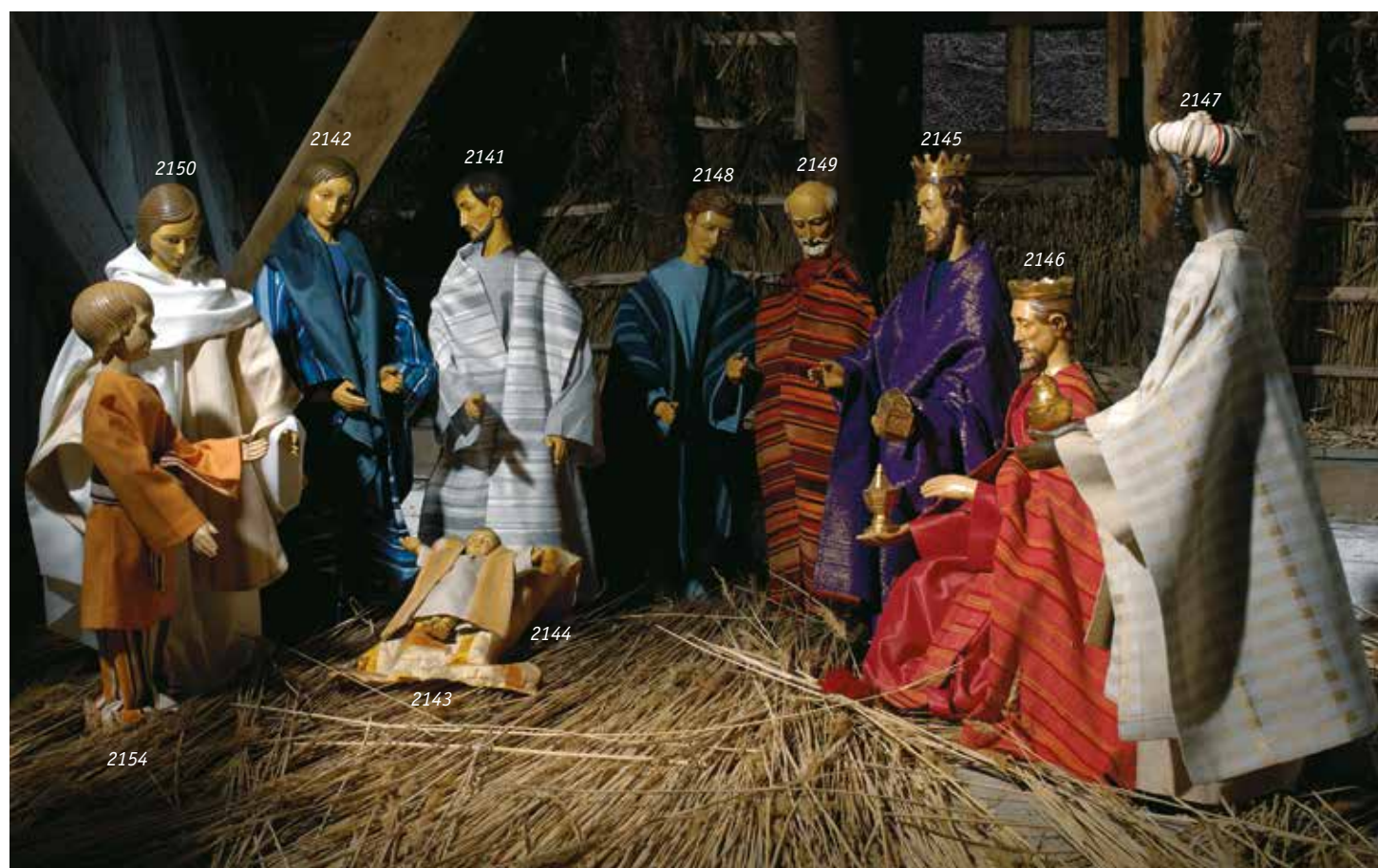
1047 Sheep, kneeling, length 39 cm

1048 Sheep, grazing, length 43 cm

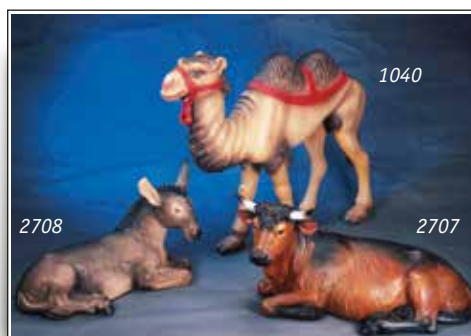
1049 Sheep, looking up, length 43 cm

2707 Ox, lying down, length 90 cm

2708 Donkey, lying down, length 70 cm



2151





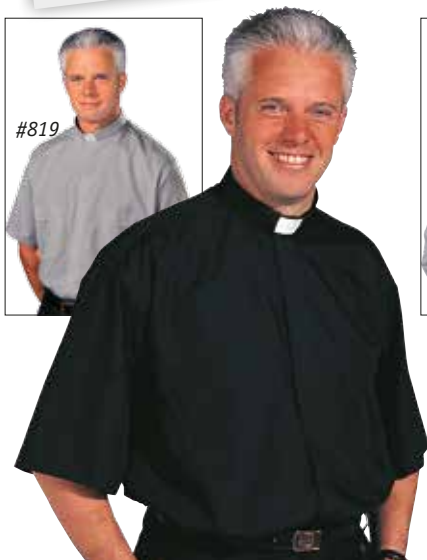
Original Stadelmaier® shirts

Enjoy the unique comfort of these refined European made shirts. High quality, wrinkle resistant and colour fast fabrics, of **65% polyester and 35% combed cotton**.

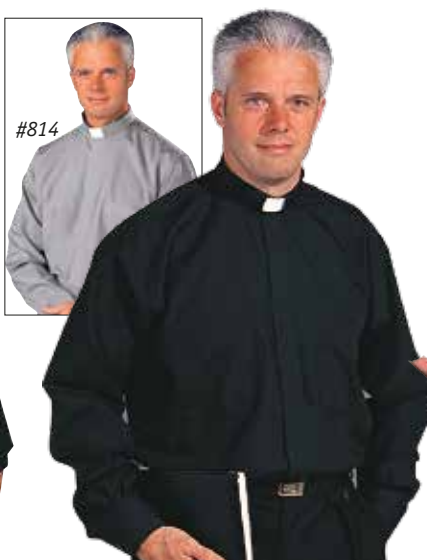
- **Tradicio:** European Tab Style, Clergy shirt with removable tab. Available with short, long and extra long sleeves. With two breast pockets. Convertible French cuffs for closure with either buttons or cuff links.
- **Torino:** Clergy shirt with a full attached Roman collar all around the neckline. Available with short, long and extra long sleeves. French cuffs for closure with cuff links only.

All shirts are available in sizes 38, 39, 40, 41, 42, 43, 44, 45, 46, 47, 48, 49, 50 and 52.

Sizes for front shirt, only available in black: 38, 41, 43, 45, 48 and 50.



#811



#812



#862



#511

Tradicio
#811 Short sleeves, black
#819 Short sleeves, grey

Tradicio
#812 Long sleeves (33-36), black
#813 Extra long sleeves (35-37), black
#814 Long sleeves (33-36), grey
#815 Extra long sleeves (35-37), grey

Torino (only in black)
#861 Short sleeves
#862 Long sleeves
#863 Extra long sleeves

Shirt front.
#511 Black



Original Slabbinck® shirts

Unique shirts, offering a wider cut and refined finish. Manufactured in a high quality **100% cotton**, for comfort and easy washing. Convertible French cuffs for closure with either buttons or cuff links. One breast pocket.

- **Classico:** An extra white tab is included with each shirt free of charge. Available with short and long sleeves.
- **Romano:** Clergy shirt with a full attached Roman collar all around the neckline. Only available with long sleeves.

All shirts are available in sizes 38, 39, 40, 41, 42, 43, 44, 45, 46, 48, 49 and 50; sizes 52 only available in black.



#31



#35

Classico, short sleeves
#31 Black
#35 Grey



#17



#16

Classico, long sleeves
#16 Black
#17 Grey



#55



#55

Romano, long sleeves
#55 Black



3846



3434



4812



4813

Cuff links, info and prices on request.

GENERAL INFORMATION: WASH-AND-WEAR FABRICS FOR ALBS



Athos-37: grey(59).
Fabric of 70% man-made fibres and 30% viscose.
Weight 200 g per m².
Width 150 cm. Price /m.



Brugia-92: white(10), beige(14) or black(50); also in red(20), green(30) and purple(40), (see p. 96). Fabric of 100% wool.
Weight 180 g per m².
Width 150 cm. Price /m.



Greco-77: beige(14).
Opaque fabric of 70% man-made fibres and 30% viscose.
Weight 175 g per m².
Width 150 cm. Price /m.



Jersey-53: white(10), crease resistant fabric, of 100% man-made fibres.
Weight 240 g per m².
Width 150 cm. Price /m.



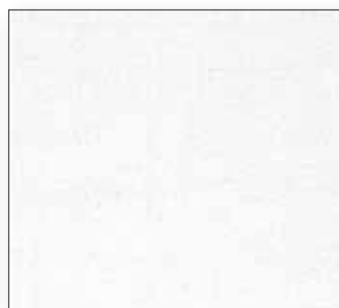
Leo-70: flax-white(12).
Structured fabric, of 90% man-made fibres and 10% flax.

Weight 205 g per m².
Width 150 cm. Price /m.



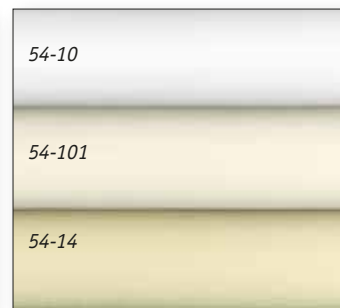
Livorno-20: white(10), beige(14) or black(50). Soft fabric, of 55% man-made fibres and 45% wool.

Weight 180 g per m².
Width 150 cm. Price /m.



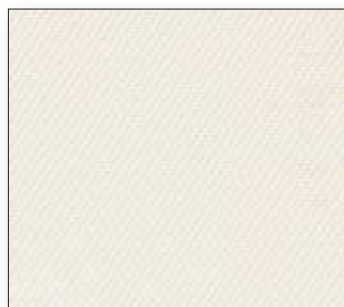
Malta-66: white(10). Fabric like Terlenka-61 though heavier, of 70% man-made fibres and 30% viscose.

Weight 265 g per m².
Width 150 cm. Price /m.



Pius-54: white(10), ecru(101), beige(14); also in red(20), green(30) or purple(40) (see p. 97). Lightweight, easy to launder fabric, of 100% man-made fibres.

Weight 150 g per m².
Width 160 cm. Price /m.



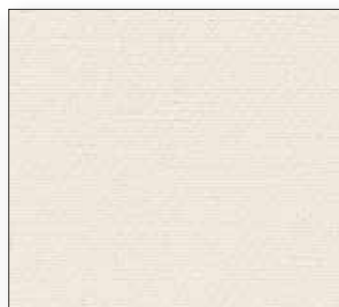
Prisma-26: white(10).
Beautiful opaque fabric, of 45% wool and 55% man-made fibres.

Weight 250 g per m².
Width 150 cm. Price /m.



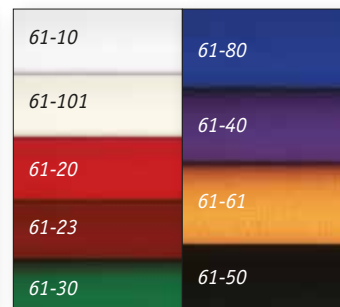
Ravenna-87: white(10).
Opaque fabric of 70% man-made fibres and 30% viscose.

Weight 210 g per m².
Width 150 cm. Price /m.



Vaticano-67: beige(14).
Opaque fabric of 70% man-made fibres and 30% viscose.

Weight 265 g per m².
Width 150 cm. Price /m.



Terlenka-61: white(10), ecru(101), red(20), dark red(23), green(30), purple(40), black(50), gold(61), blue(80).

Opaque fabric of 70% synthetic fibres and 30% viscose.
Weight 175 g per m².
Width 150 cm. Price /m.

Fabrics
Wool, flax (linen), cotton and silk: natural fibres.
Rayon & viscose: processed vegetable cellulose.
Man-made fibres & Trevira: entirely man-made non-vegetable products.
Fabric samples will be sent on request.
© Copyright SLABBINCK

Washing	Bleaching	Dry	Ironing	Prof. cleaning
95 normal process 95 gentle process 60 normal process 60 gentle process 40 normal process 40 gentle process 30 normal process 30 gentle process 30 very gentle process hand wash do not wash	any bleach allowed non-chlorine bleach allowed do not bleach	tumble dry possible tumble dry low temperature do not tumble dry	max 200°C/392°F max 150°C/302°F max 110°C/230°F do not iron	drycleaning in tetrachlorethene drycleaning in tetrachlorethene gentle process do not dry-clean Prof. launder Prof. launder, gentle process Prof. launder, very gentle process do not launder
Label cleaning instructions <i>Every article includes a label indicating international symbols for cleaning. The label indicates the maximum treatment or process to be applied to each article. The numbers provide the highest recommended temperatures in °C. For machine washing use, small loads of fabric in large wash cycle on delicate setting to allow adequate water circulation.</i>				

GENERAL INFORMATION: SIZES AND FINISHES

For standard and special sizes and neck finishes, as shown on illustrations, charts and sketches.
All measurements are given in cm.
We supply size and neckline, according to the illustration in the catalogue, unless otherwise specified in your order.
Extra charges are possible for special designs and measurements.

Alb, Sanctuary Alb, Liturgical Gown, Tunic

Standard size

When ordering, only A-B = length to be indicated: from the top vertebra to the top of the shoe (30 cm less than person's total height).

Special size

I Standard size with minor adjustments

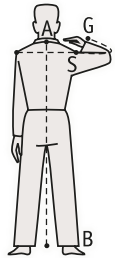
Adjustment A-B = back length and S-G = sleeve length; when ordering, please indicate desired standard size and quote special measurements A-B = back length, S-G = sleeve length and C = chest size.

Supplement for adjustment:
Back length and sleeve length

II Entirely custom-made

Please give the following measurements: A-B = length, C = male chest size or female bust size, W = waist, S-S = shoulder to shoulder, S-G = sleeve length and A-G = measurement from centre back plus sleeve length; preferably also neck size or shirt number size.
Supplement

When ordering, please specify if for a man or woman.



Surplice

Standard size

Chest 105 cm.

Only A-B = length to be indicated when ordering:

- for altar servers: 40, 50, 60 or 70 cm;
- for adults: 90 cm (small), 97,5 cm (medium) or 105 cm (large).

Special size

I Standard size with adjustments

Indicate A-B = length, S-S = shoulder to shoulder and S-G = sleeve length when ordering.
Supplement

II Entirely custom-made

Please give the following measurements: A-B = length, C = male chest size or female bust size, S-S = shoulder to shoulder, S-G = sleeve length.
Supplement

Cope, Humeral veil, Mitre

• Cope

When ordering, indicate A-B = length of cope and person's total height (length of the cope is 35 cm less than person's height).
Without indication of length, we supply standard size 145 cm.
Supplement lining for cope

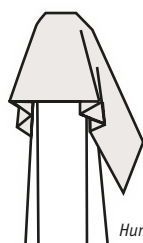
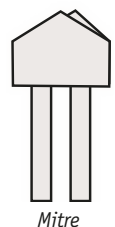
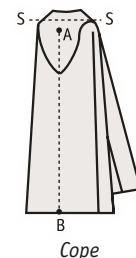
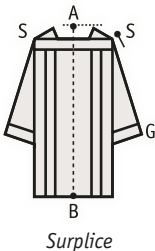
Overlay stole or inside stole NOT included in price of cope. Please order separately.

• Humeral veil

Available with matching decoration.
Standard finish is always lined.
Size: 54 x 275 cm.

• Mitre

When ordering, please indicate head size.



Chasuble, Monastic Chasuble, Dalmatic

Prices include (unless otherwise specified):

- small chasuble or dalmatic stole to be worn under the garment;
- if embroidered, same embroidery on front and back;
- neck finish according to catalogue;
- unlined.

Standard size

Style	A = width	B = length	Supplement
Small	150-160 cm ¹⁾	125 cm	Basic price
Standard	150-160 cm ¹⁾	135 cm	Basic price

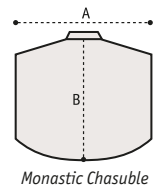
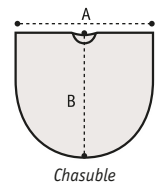
¹⁾ According to the width of the fabric, see information fabrics for vestments and paraments p. 96 and 97.

Special size

2	Supplement monastic chasuble	
9	Special, custom-made	upon request

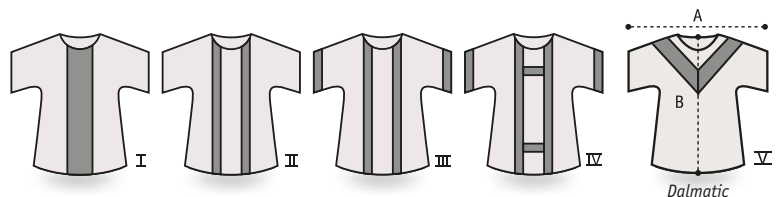
Available at extra charge:

Chalice veil, unlined, 58 x 58 cm	upon request
Chalice veil, lined, 58 x 58 cm	see p. 97
Burse, 20 x 20 cm	see p. 97
Benediction burse (without embroidery), 23 x 23 cm	upon request
Chasuble or dalmatic inside stole to be worn under chasuble or dalmatic	see p. 97
Lining for chasuble or dalmatic	



Dalmatic: a matching dalmatic is available for each chasuble.
Price upon request.

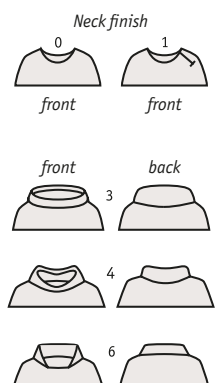
When ordering, please indicate style I, II, III, IV or V.



Neck finish

F = neck size; H = height of collar or capuche. The neck finish indicated in the catalogue is included in the price; other neck finishes are available at extra charge or reduction according to tariff below.

N°	Neck finish	F	H	Price difference
0	Plain	64 cm	-	Basic price
1	Plain neckline, with zipper			
	on left shoulder	62 cm	-	
3	Roll-collar	66 cm	12 cm	
4	Roll-collar	65 cm	9 cm	
6	Low stand-up collar	68 cm	8 cm	
6A	As 6, embroidered	68 cm	8 cm	



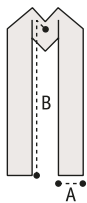
Embroidered memorial label.

Can be applied to all vestments and paraments. Text is embroidered on the lining of the stole. A lasting memorial.

85 Label, gold colour embroidery per letter
Example:

*In Loving Memory of
Peter and Mary Jones*

GENERAL INFORMATION: SIZES AND FINISHES



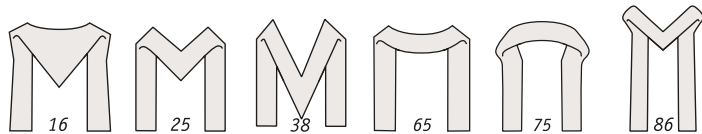
Overlay stole (single-sided or reversible), Deacon stole

• Overlay stole

Always lined and interlined; available with different neck finishes, supported by an elegant chain (except style 107), which prevents the stole from rubbing neck or hair, and saves the use of a stole protector.

I Single-sided overlay stole

Style and neck finishes: A = width at ends; B = overall length, neck finishes included. The neck finish indicated in the catalogue is included in the price; other neck finishes are available at extra charge or reduction, see page 97.

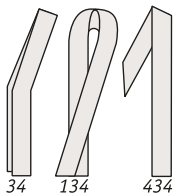


N°	Neck finish	Width A	Length B
16	Full tapered flat capuche; spreading out towards ends	16 cm	160 cm
25	Flat capuche	12 cm	145 cm
38	Tapered flat capuche	12 cm	155 cm
65	Flat rounded neck finish	12 cm	145 cm
75	Stand-up collar	12 cm	145 cm
86	Pointed flat capuche; spreading out towards ends	16 cm	160 cm
107	Flat rounded neck finish with cutouts in front	13 cm	145 cm

II Reversible overlay stole

Manufactured like the overlay stole, but reversible: white-purple, red-green or other colour combinations.

• Deacon stole



Matching the design of the overlay stole. Worn from left shoulder to right hip. Deacon stoles will be delivered for a standard chest size 95-115 cm. On request deacon stoles can be made to custom size at no additional charge. Standard chest size (95-115 cm) will be supplied unless otherwise requested.

Style 34: embroidery in front at chest height, on back on lower panel.

Style 134: Crossed style

Style 434: Byzantine cut, with band front and back.

N°	Type	Width A	Length B
34	Standard	12 cm	145 cm
134	Crossed style	12 cm	145 cm
434	Byzantine	12 cm	130 cm

Lectern cover, Pulpit cover, Altar paraments, Altar cover, Antependium, Half Altar cover

Lined and interlined; finished with an open hem at the top and the bottom; microphone opening to order²⁾.

• Lectern cover, style 62

A = width up to 60 cm (at indicated price, without supplement); D = front drop; C = depth; E = back drop; D + C + E = overall length.

Standard sizes D + C + E = 180 cm. A = 45 cm. D = 110 cm.

Special sizes If longer or deeper than standard sizes, add a supplement per cm see p. 97

• Pulpit cover, art. 115

Same finish as lectern cover art. 62, but with different standard sizes and special sizes.

Standard sizes D + C = 100 cm. A = 45 cm. D = 55 cm.

Special sizes If longer or deeper than standard sizes, add a supplement per cm (same as for lectern cover art. 62) see p. 97

• Altar paraments, style 114

Same finish as lectern cover art. 62, but with different standard sizes and special sizes.

Standard sizes D + C + E = 150 cm. A = 45 cm. D = 75 cm.

Special sizes If longer or deeper than standard sizes, add a supplement per cm (same as for lectern cover art. 62) see p. 97

• Altar cover, style 64

A = width up to 105 cm (at indicated price, without supplement);

D = front drop; C = depth; E = back drop; D + C + E = overall length.

Standard sizes D + C + E = 190 cm. A = 90 cm. D = 90 cm.

Special sizes If longer or deeper than standard sizes, add a supplement per cm see p. 97

• Antependium, style 112

A = width up to 180 cm (at indicated price, without supplement); D = front drop; C = depth; E = back drop; D + C + E = overall length.

Standard sizes D + C + E = up to 190 cm. A = up to 180 cm. D = 90 cm.

• Half altar cover, style 113

Same as antependium, style 112 but with different standard sizes and special sizes.

Standard sizes D + C + E = up to 130 cm. A = up to 180 cm. D = 35 cm.

Altar cloth, Laudian frontal, Half Laudian frontal

Microphone opening and special cut-out (e.g. tabernacle) to order²⁾.

• Altar cloth, style 63

When ordering, indicate measurements for **finished** altar cloth; A = length of mensa; B = side drops; C = depth of mensa; D = front drop; E = back drop.

If depth (C) is over the width of the fabric, the altar cloth is finished with a seam.

There is 1 metre minimum charge.

The necessary fabric is added to the altar cloth (style 63), to compensate for shrinking during first laundering. Due to the different washing and laundering procedures, the fabric may shrink more or less than anticipated. Therefore, all altar cloths are provided with a large hem of 4 cm to be adjusted if necessary.

Prewash is possible if requested, supplement is

The front and back drop of type IV, are always attached by seams to the altar cloth.

• Laudian frontal, style 66

Covers the altar on all sides, corners are rounded. Interlined. Finished with a middle seam in the length. When ordering, indicate measurements for **finished** laudian frontal:

A = length of mensa; C = depth; D and E = equal front and back drops, usually 5 cm less than altar height.

Special sizes

If the measurement A is more than 180 cm, supplement per cm

price upon request

If the measurement C + D + E is more than twice

the width of the fabric price upon request

• Half Laudian frontal, style 166

Same as laudian frontal, style 66, but with shorter front, back and side drops D and E up to 25 cm.

Special sizes

price upon request

Interchangeable altar panels

• Interchangeable superfrontal, style 69

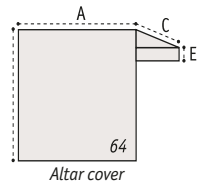
Adorns front of altar cloth. When ordering, please indicate: A = length of mensa (standard length 180 cm; over 180 cm, supplement per cm);

D = height (standard ht. 25 cm; over 30 cm; supplement per cm)

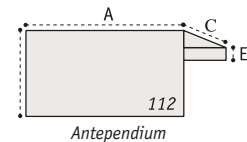
prices upon request

²⁾ Microphone opening, supplement of
Special cut-out, supplement of

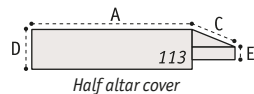
No deduction for less than standard size.



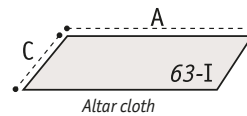
Altar cover



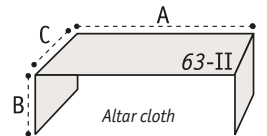
Antependium



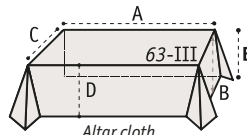
Half altar cover



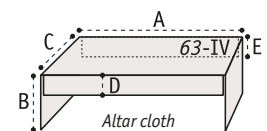
Altar cloth



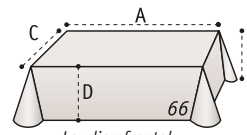
Altar cloth



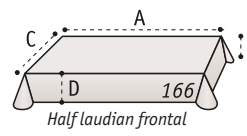
Altar cloth



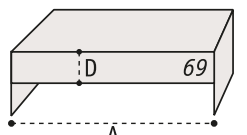
Altar cloth



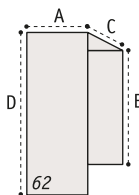
Laudian frontal



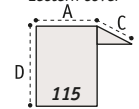
Half laudian frontal



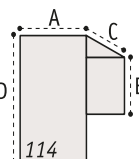
Interchangeable panels



Lectern cover



Pulpit cover

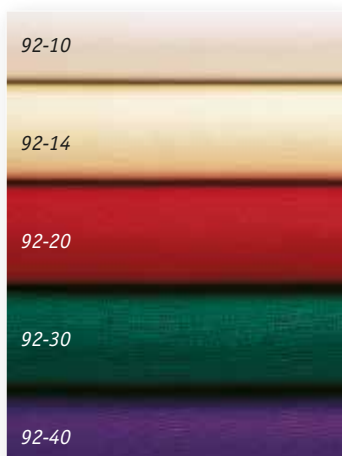


Altar paraments

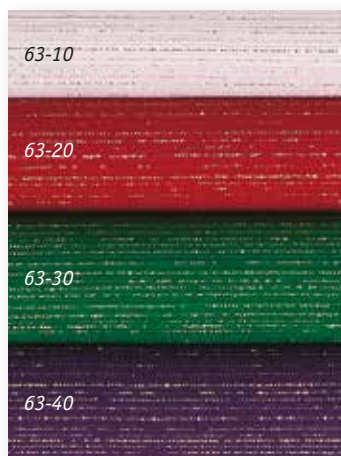
GENERAL INFORMATION: FABRICS FOR VESTMENTS AND PARAMENTS



Adornes-124: white(10), beige(14), red(20), green(30), purple(40), rose (21), black(50). Fabric of 100% man-made fibres. Weight , white 230 g per m²; other colours 145 g per m². Width 150 cm. Price /m.



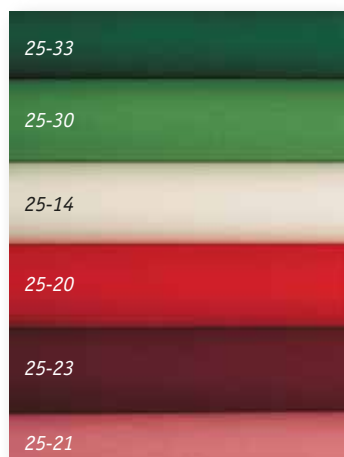
Brugia-92: white(10), beige(14), red(20), green(30), purple(40); also in black(50) (see p. 93). Fabric of 100% wool. Weight 180 g per m². Width 150 cm. Price /m.



Cantate-63: white(10), red(20), green(30), purple(40), black(50)*. Structured fabric with gold threads woven into the material, of 99 % wool and 1 % gold threads. Weight 220 g per m². Width 160 cm. Price /m.

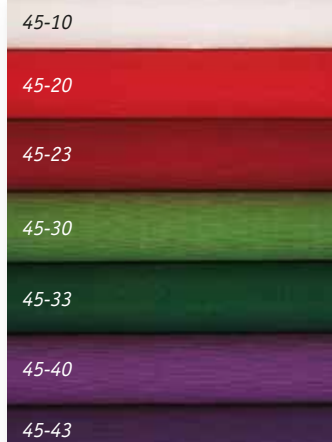
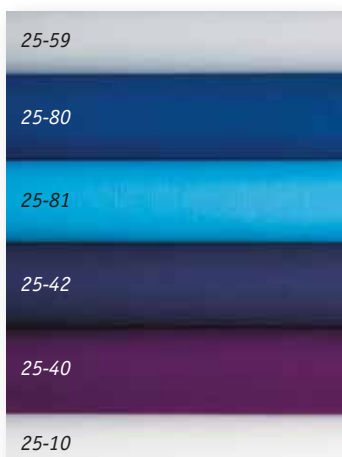


Duomo-138: ecru(101), red(20), green(30), purple(40). Fabric of 100% man-made fibres. Weight 115 g per m². Width 160 cm. Price /m.

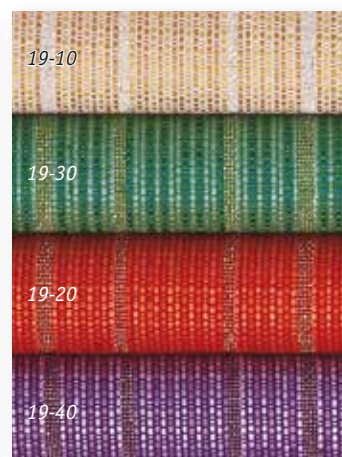


Dupion-25: illustrated from top. Column 1: dark green(33), green(30), beige(14), red(20), dark red(23), rose(21). Column 2: grey(59), blue(80), light blue(81), indigo-violet(42), purple(40), white(10). Knotted yarn fabric of 70% man-made fibres and 30% viscose.

Weight 200 g per m². Width 150 cm. Price /m.



Lucia-45: white(10), red(20), dark red(23), green(30), dark green(33), purple(40), deep purple(43), blue(80)*. Rustic fabric with textured structure, of 53% man-made fibres, 31% cotton and 16% viscose. Weight 325 g per m². Width 150 cm. Price /m.

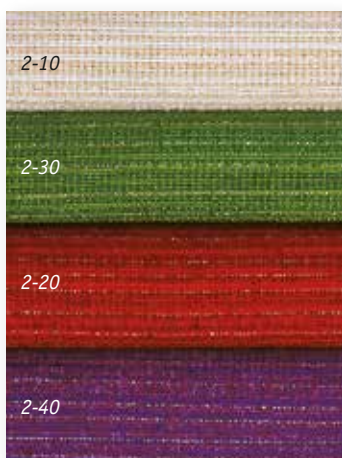


Melchior-19: white(10), red(20), green(30), purple(40). Yarn dyed colourful fabric, with randomly woven colour and gold threads, of 99% viscose and 1% gold threads. Weight 190 g per m². Width 160 cm. Price /m.



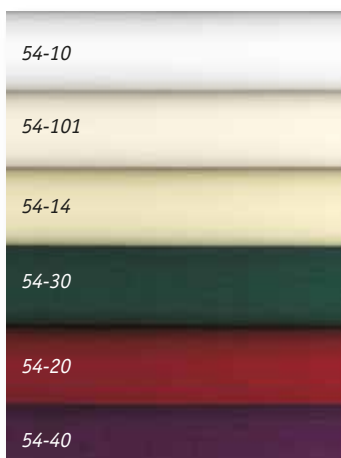
Omega-51: flax-white(10), red(20), green(30), purple(40), blue(80). Yarn dyed fabric with structured texture, of 60% man-made fibres, 30% viscose and 10% flax.

Weight 325 g per m². Width 140 cm. Price /m.



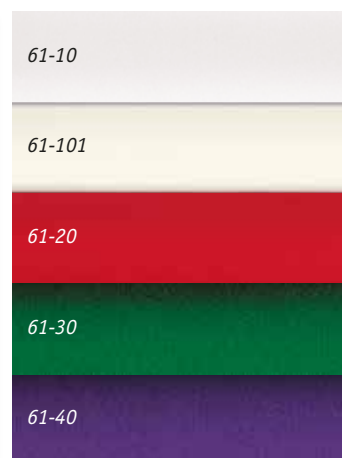
Pascal-2: white(10), red(20), green(30), purple(40). Structured fabric with gold threads woven into the material, of 69% man-made fibres , 30% viscose and 1% gold thread.

Weight 280 g per m². Width 160 cm. Price /m.



Pius-54: white(10), ecru(101), beige(14), red(20), green(30) or purple(40). Lightweight, easy to launder fabric, of 100% man-made fibres.

Weight 150 g per m². Width 160 cm. Price /m.

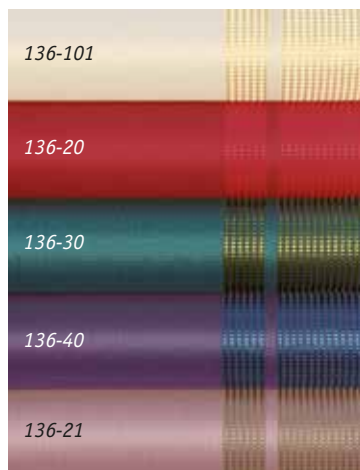


Terlenka-61: white(10), ecru(101), red(20), green(30), purple(40). Opaque fabric of 70% synthetic fibres and 30% viscose.

Weight 175 g per m². Width 150 cm. Price /m.

* Not illustrated.

Vestments and paraments **without embroidery**, manufactured in differently priced fabrics.



Agate-136: ecru(101), red(20), rose(21), green(30), purple(40).
Of 100% man-made fibres.

NOT AVAILABLE PER METER



Damiano-16: gold(10), red(20), green(30), purple(40).
Of 97% man-made fibres, 3% viscose.

NOT AVAILABLE PER METER



Price category

- B Pius (w. 160 cm) and Terlenka (w. 150 cm)
- C Dupion (w. 150 cm)
- E Adornes (w. 150 cm), Duet (w. 150 cm) and Omega (w. 140 cm)
- F Athos (w. 150 cm), Brugia (w. 150 cm), Lucia (w. 150 cm), Pascal (w. 160 cm) and Prior (w. 150 cm)
- G Damiano (w. 160 cm) and Melchior (w. 160 cm)
- H Cantate (w. 160 cm), Choral (w. 160 cm) and Seta (w. 12 cm)
- I Duomo (w. 160 cm)
- M Clemens (w. 160 cm)

Chasuble, monastic chasuble and dalmatic: length 135 cm, width according to fabric width; with plain neckline "O"*; with or without inside chasuble or dalmatic stole (indicated as "without" or "with").

Chalice veil, 58 x 58 cm or **burse**, 20 x 20 cm, at the same price.

Price-cat.	Chasuble or dalmatic		Monastic chasuble		Chalice veil (lined) or burse
	without	with	without	with	
B					
C					
E					
F					
G					
H					
I					
M					

Are not manufactured in Omega.

Overlay stole: 1st price single-sided, 2nd reversible.

Deacon stole: style 34, available at same price as overlay stole style 25.

Price cat.	Style 25		Style 38		Style 86	
C						
E						
F						
G						
H		-		-		-
I						
M		-		-	-	-

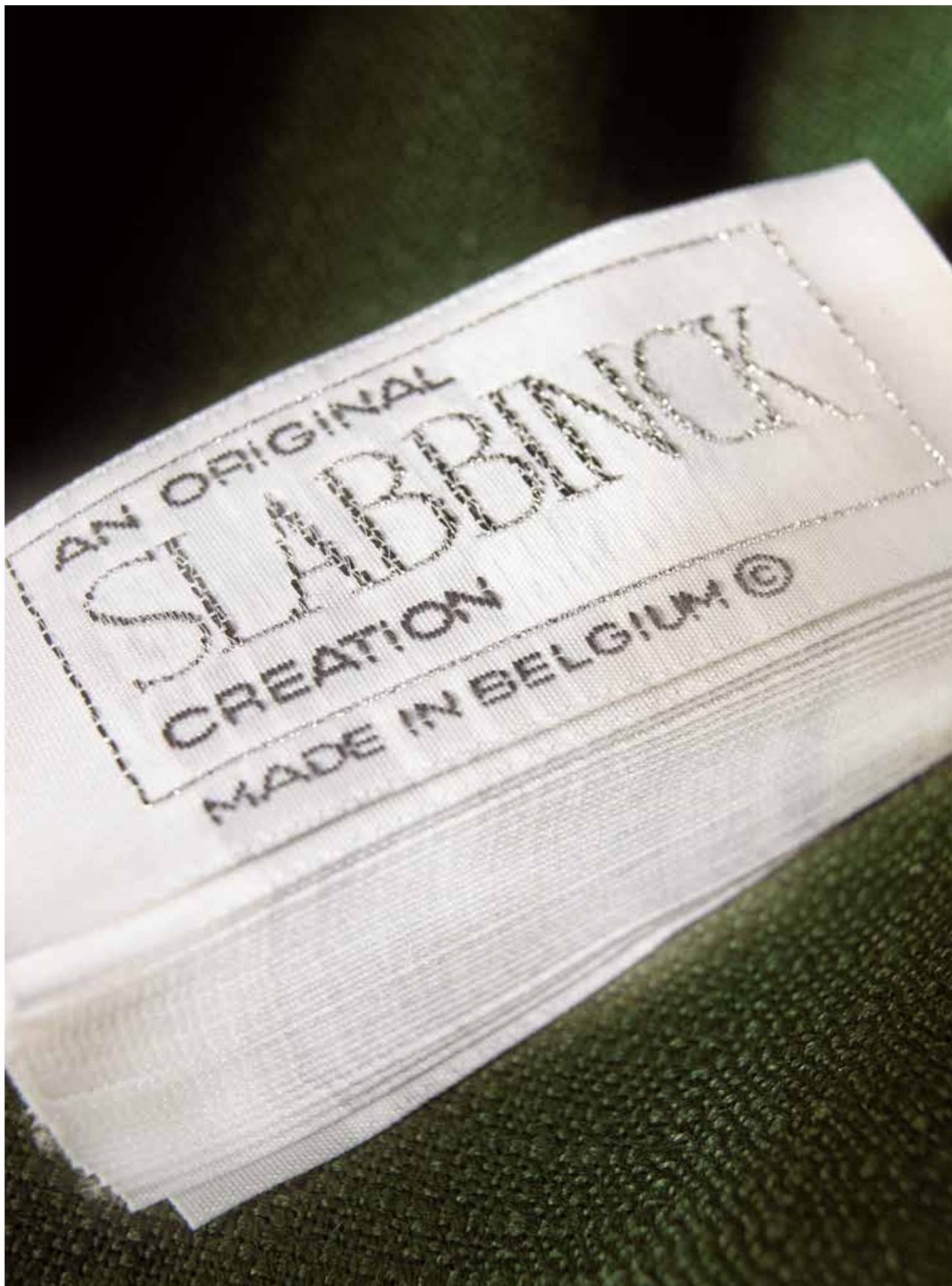
Price cat.	70-Cope unlined	62-Lectern cover 45 x 180 cm	64-Altar cover 90 x 190 cm	62-64 ¹⁾ per cm
C				
E				
F				
G				
H				
I				

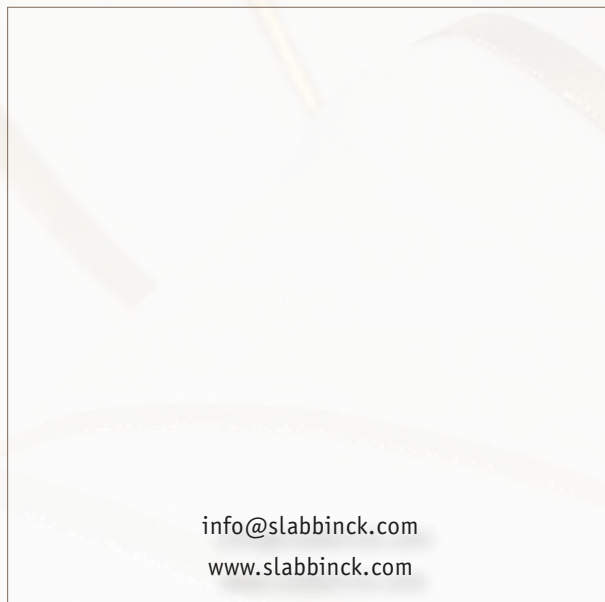
Cope is not available in Omega.

For other fabrics than indicated in the catalogue: check price category of fabrics and article; the difference between the higher and the lower price indicates the supplement or reduction.

¹⁾ 62-Lectern- and 64-Altar cover. For longer or wider, please add the supplement per cm. See also information sizes, p. 95.







info@slabbinck.com
www.slabbinck.com



If you “like” us on our Facebook page
www.facebook.com/KunstateliersSlabbinck,
we will keep you updated on news of our
products, customers or the operation of our
company. We look forward to welcoming you
to this page.



With project “Handmade in Bruges”, Bruges
presents itself as a city of pioneering
craftsmanship. Rooted in a centuries old
tradition while being currently committed to
creation and innovation, Slabbinck is proud to
join this initiative.