

SLABBINCK®

IN SERVICE OF LITURGY SINCE 1903



## A T E L I E R SLABBINCK®

The origins of Atelier Slabbinct date back to 1903, the year Hendrik Slabbinct, skilled gold embroiderer, started his workshop in Bruges Belgium.

The Slabbinct family has worked to make the company an international reference for liturgical vestments.

The craftsmanship, eye for detail service-minded company culture are well known.

With our dedicated team, we specialised in customized and bespoke projects and guarantee the highest quality.





*Liturgy is touched by the beauty of creation and it is transfigured through prayer.*

*We, at Slabbinck, are in service of the liturgy and people, such as yourself.*

*While remaining true to this tradition, each day we strive to be creative and to look for new ways of expressing this beauty.*



5283

Chasuble in **Moiré**; with hand embroidered ornaments and "Good Shepherd"; machine embroidered emblem; finished with gold braid.



299-3978



299-2749



299-3986



Other designs, see website

299-5342  
Roman chasuble in gold brocade; with hand-embroidered design on red velvet.





5285

Chasuble, in **Sentia**, with machine embroidered lines in gold-, silver- and old-gold threads.



### 3569 - 50-3568

Chasuble and overlay stole in **Cantate**, exquisite hand embroidery in the finest cotton and gold coloured threads. "Four Evangelists".



### 3356 - 50-3356

Chasuble and overlay stole in **Cantate**, exquisite hand embroidery in the finest cotton and gold coloured threads. "Lamb of God".



**5284**

Chasuble in **Sentia**, machine embroidered motif "The Four Evangelists".



**2784**

Chasuble in **Cantate**; with hand embroidered motif on dark red velvet.



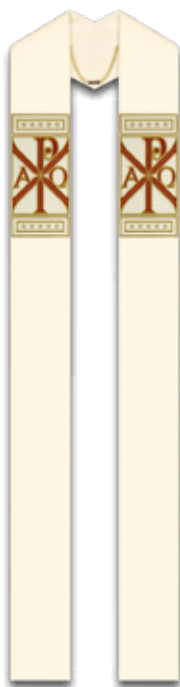
**3983 - 50-3860**

Chasuble in **Cantate** and overlay stole, hand embroidery on dark red velvet banding, "Four Evangelists".



**5034**

Chasuble and overlay stole in **Cantate**, with Marian motif.



**5329**

In **Brugia**, band made in **Cantate**; with machine embroidery with gold and/or coloured threads.



**5089**

In **Cantate**, with machine embroidered cross in gold threads.



**5289**

In **Duomo**, digitally printed design on damask banding.



Monastic chasuble in **Cantate**, *machine embroidered* with gold and silver coloured threads on woven banding in **Seta**.

2-3850





2-5328

Monastic chasuble in **Dupion**, band with application and wool thread, finished with matching coloured cord.



5226

In **Brugia**, linear design in wool and cross in application.



5176

In **Brugia**, collar and band on front and back in colourful application.



5167

In **Dupion**, with application in **Cantate** finished with embroidered gold lines.



5090

In **Dupion**, with motifs in application.





5232

In **Cantate**, embroidered floral design with Saint George on front and back. Other saints possible (see illustration).



3950

In **Cantate**, roll-collar in velvet; applique embroidery on a velvet band.



2-5239

Monastic chasuble in **Lucia**, linear design with gold cord.



5343



5344

7-5343

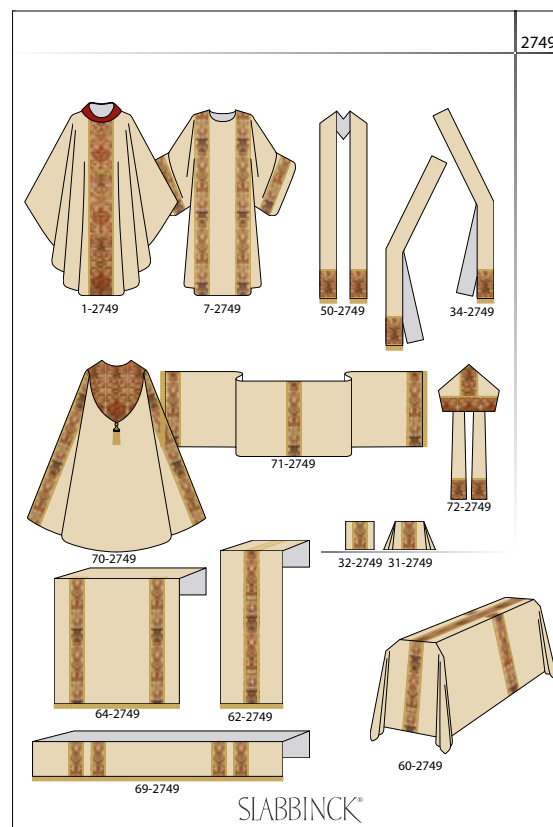
In **Cantate** with application in silky-look.





**2749**

In **Dupion**, with **Regina** brocade orphreys.





50-2749



2749-0



2749-0



2749-0



2749-0



50-3371



2750-0



2751-4



2752-0



72-2749

70-2749



260-2749



233-2749



230-2749



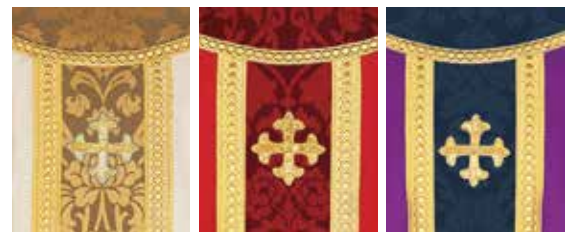
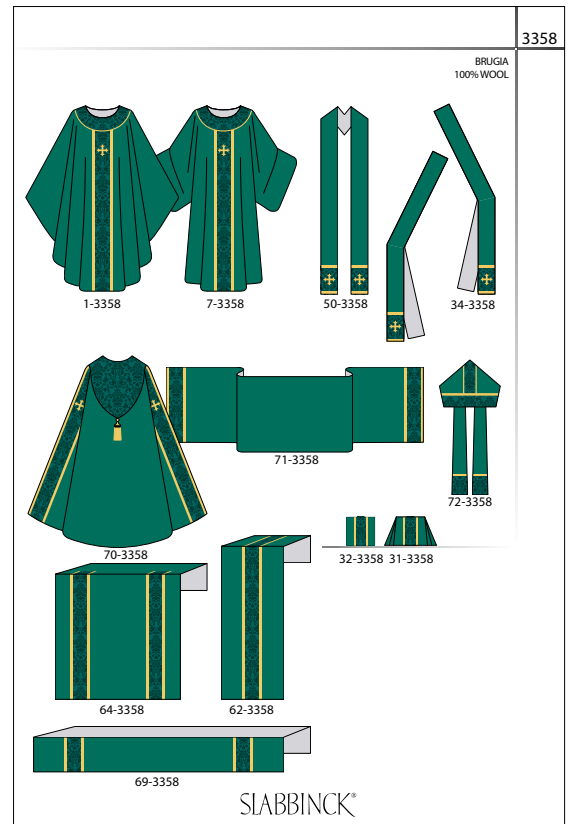
299-2749





**3358**

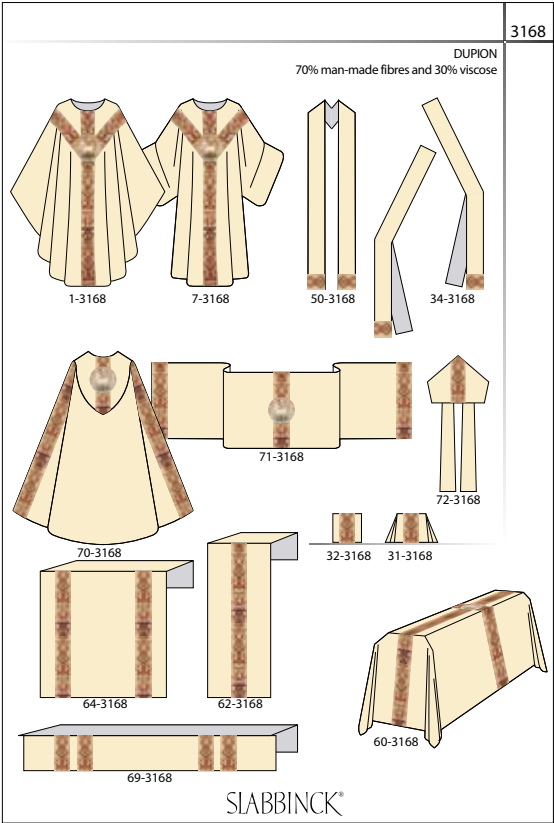
Set in **Brugia**, banding and decoration around neck in **Goya**, damask fabric, with gold braid and hand embroidered cross.



3358

3168

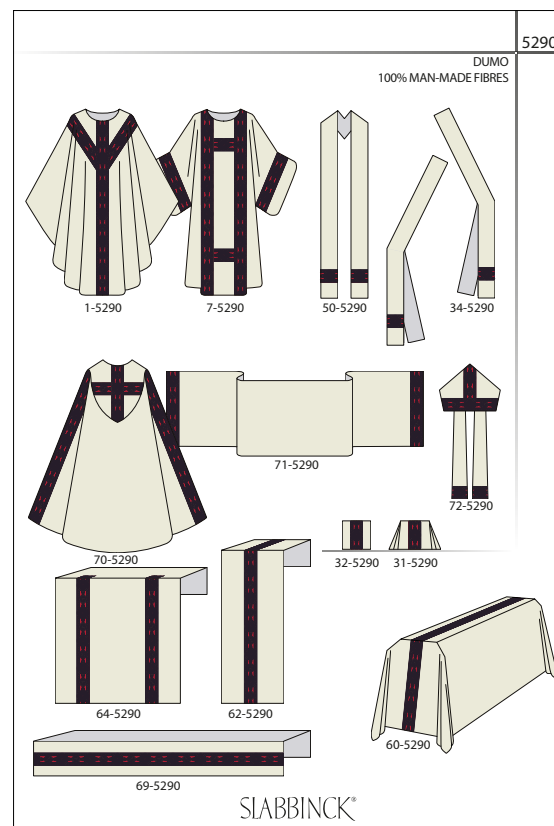
Set in **Dupion**, hand embroidered emblem on an orphrey in **Regina**, a multi-coloured brocade.





**5290**

Set in **Duomo**, with beautiful woven galoon.



5290

5290

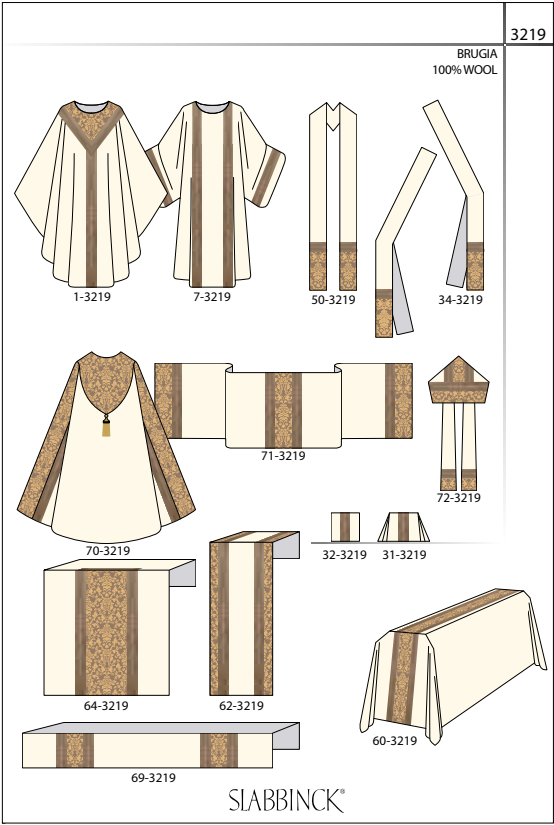
5290

5291



3219

Set in **Brugia**, combination of brocade application and orphreys.



3219





5095

5096

5097

5094



**5094 - 5095 - 5096 - 5097**  
Chasuble in **Sentia**, design by Albano Poli.



Monastic chasuble in **Sentia** with embroidered cross in gold and wool threads on silk applique.

2-90102





5006 - 5007 - 5008 - 5009

Design by **Brody Neuenschwander**, an American calligrapher and text artist, printed on **Pius**.



**5230**

In **Dupion**, with printed band in **Jona**.



**5159**

In **Pius**, with printed band in **Pius**.



**5056**

In **Dupion**, with printed band in **Pius**.



**5249**

In **Pius**, with digital printed band in **Jona** with cross motif.





**5175**  
Chasuble in **Agate**.



**3675**  
Monastic chasuble in **Venetia**, with motifs woven into the fabric.



**3160**  
Chasuble in **Terra**, with border and cross motifs with colour gradation woven into the fabric.



**3111**  
Chasuble in **Brugia**, band in **Ornata**.



19

In **Melchior** without embroidery, colourful material, with randomly woven gold and coloured threads.



3858

In **Celtic**, woven banding with hand embroidered cross motif in relief and vertical lines.



5082 - 5083

In **Vincenzo**, with machine embroidered crosses on application.



**5257**

In **Duomo**, band in velvet with embroidered gold crosses, outlined with fine gold braid.



**3978**

In **Adornes**, with embroidered crosses.



**5308**

In **Brugia**, with Jaquard woven gold/coloured fabric, outlined with gold braid.



**5185**

In **Pius**, with orphreys.



5340

5340

5340

5340

5341

## 5340 - 5341

In **Dupion** with machine embroidery with gold and coloured thread.



## 5195

In **Cantate**, machine embroidered cross and lines.



## 5144

In **Terlenka**, with elegant galloon.





*We believe happiness lies in the details.*

*One subtle touch that makes the difference between  
fine and masterly.*

*That is what we aim for.  
Time and again.*



5121



50-5122



Set in application with embroidery; chasuble and overlay stole in **Dupion**, lectern cover and altar cover in **Omega**.



3921



50-3922



Set in application with embroidery; chasuble, overlay stole, lectern cover and altar cover in **Lucia**; chasuble and overlay stole also available in **Dupion**.



2155



50-2156



Set in application with embroidery; chasuble, overlay stole, lectern cover and altar cover in **Pascal** or in **Cantate**.



Set in application with embroidery; chasuble and overlay stole in **Dupion**, lectern cover and altar cover in **Omega**.



50-5127

5126



Set in application with embroidery; chasuble, overlay stole, lectern cover and altar cover in **Lucia**; chasuble and overlay stole also available in **Dupion**.



50-3927

3926



Set in application with embroidery; chasuble, overlay stole, lectern cover and altar cover in **Pascal** or in **Cantate**.



50-2161

2160





5131



50-5132



Set in application with embroidery; chasuble and overlay stole in **Dupion**, lectern cover and altar cover in **Omega**.



3931



50-3932



Set in application with embroidery; chasuble, overlay stole, lectern cover and altar cover in **Lucia**; chasuble and overlay stole also available in **Dupion**.



3174



50-2534



Set in application with embroidery; chasuble, overlay stole, lectern cover and altar cover in **Dupion**; overlay stole, lectern cover and altar cover also available in **Omega**.



Set in application with embroidery; chasuble and overlay stole in **Dupion**, lectern cover and altar cover in **Omega**.



Set in application with embroidery; chasuble, overlay stole, lectern cover and altar cover in **Lucia**; chasuble and overlay stole also available in **Dupion**.



Set in application with embroidery; chasuble, overlay stole, lectern cover and altar cover in **Pascal** or **Cantate**.





62-3432



66-3431



62-3635



66-3434



62-3241



66-3242



62-3630



66-3629



62-1792



66-1791



62-3631



66-2901



62-3254



66-3256



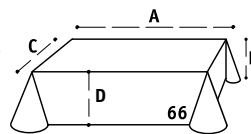
62-3633



66-3632

### Full laudian frontal and matching lectern cover in Omega or Lucia

The fabric is reinforced with fused backing material and has rounded corners; the hem is finished with a ribbon on the inside. The side drops (D and E) are of equal length.



Full range via QR code



69-3798



69-3795



69-3796



69-3792



69-3248



69-2752



69-3797



69-3794



69-3791



69-2471



69-3790



69-3329



69-3793



69-3331

### Interchangeable superfrontal

These stylish interchangeable superfrontals are lined, interlined and easy to attach with velcro (positive part hooklets attached to the altar cloth, negative part felt attached to the superfrontal), making it possible to leave the main cloth on the altar.

Also available as **half laudian frontal** 166.



Full range via QR code



166-3953



35-3334



35-3335



35-3337



35-3315

35-3316

54-7

Lectionary cover - Bible marker



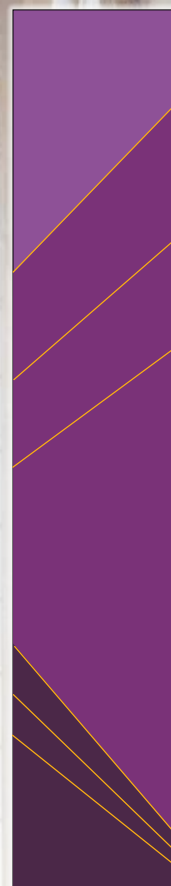
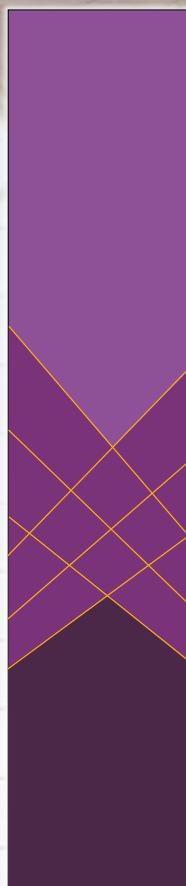
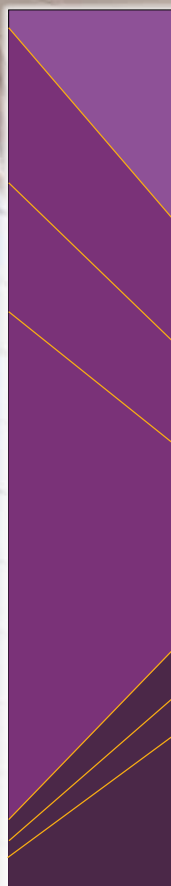
Full range via QR code



Full range via QR code



5268 (B) Lucia



Custom project based on designs 5138, 5139 and 5140



4734 (B) Omega



4736 (B) Lucia



4737 (B) Omega



4738 (B) Omega



4739 (B) Lucia



4740 (A) Omega



See the full range tapestries on our website or ask for a design for your own ideas and wishes.



In washable **Terra**, cross-design woven in a grey band.



In **Brugia**, orphreys in **Ornata**.



In **Dupion**, with **Regina** orphreys.



In **Vitus**, grey.



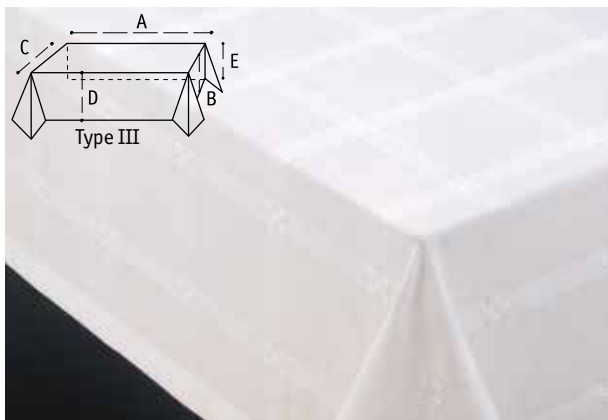
7002



7003



See the full funeral assortment.



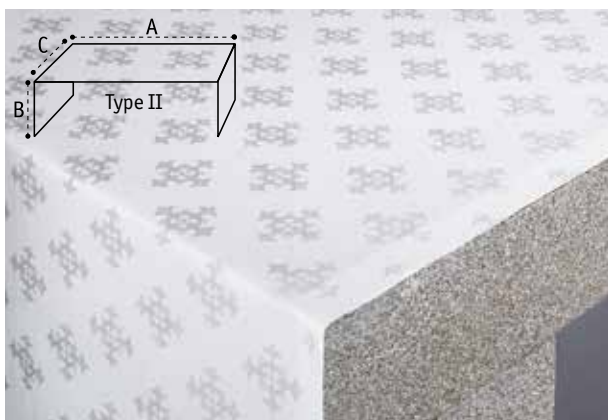
### 63-35 Alpha

White fabric, 95% cotton, 5% linen, with woven crosses.



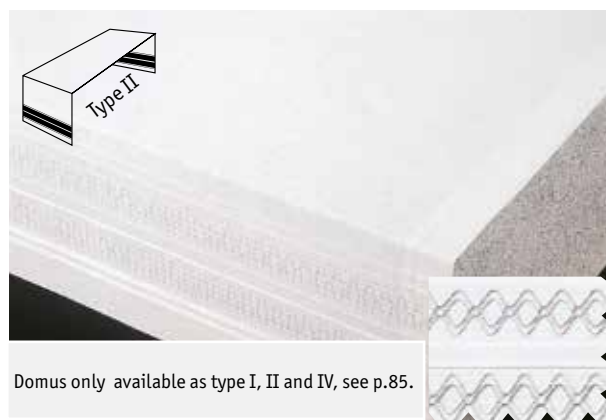
### 63-41 Basilica

In blended Belgian linen (see 63-38), with inserted woven border on the four sides.



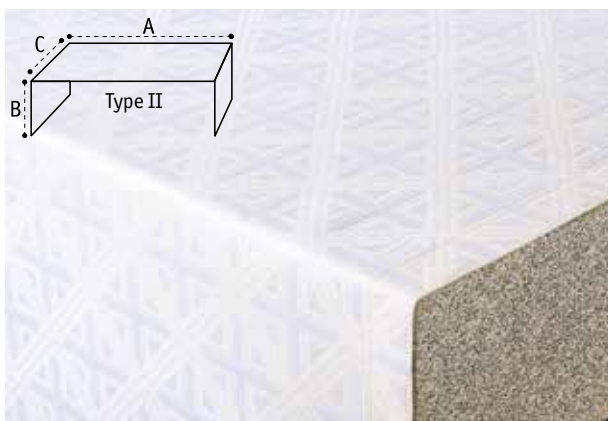
### 63-124 Adornes

Damask fabric of 100% man-made fibre, with crosses woven into the fabric.



### 101 Domus

In blended Belgian linen (see 63-38), with linear embroidery and stitched gathers.



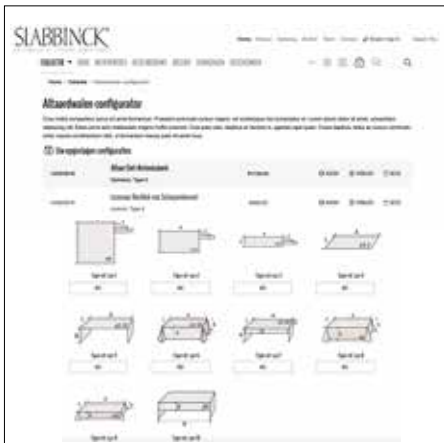
### 63-85 Crux

White jacquard fabric of 85% man-made fibres and 15% cotton, with inset woven cross motifs.

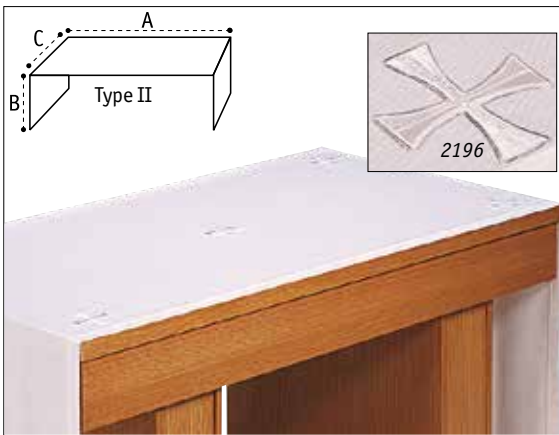


### 301 Cathedral

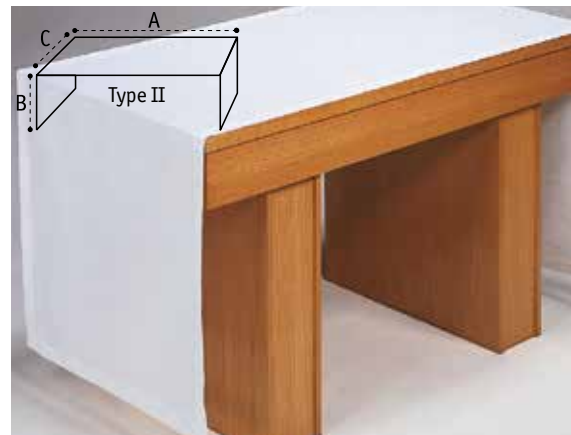
In blended Belgian linen (see 63-38), with open embroidery in (59) grey-white or (60) gold-white.



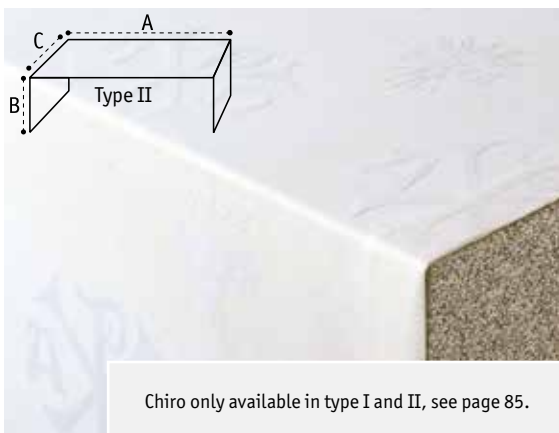
Altar cloth configurator: in five simple steps we will calculate the price of your customized altar cloth.



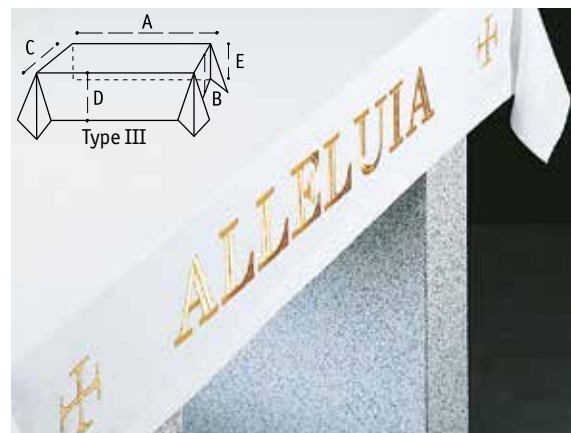
**63-87**  
In **Ravenna**, 70% man-made fibres, 30% viscose, with crosses 2196.



**63-38**  
In **blended linen**.

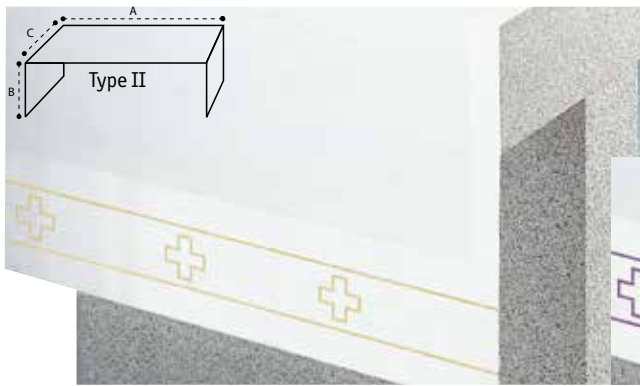


**63-93 Chiro**  
White jacquard fabric of 100% man-made fibres, with inset woven chiro, wheat and grapes motifs



**63-2774**  
Altar cloth 63-38 with washable embroidery in gold thread.

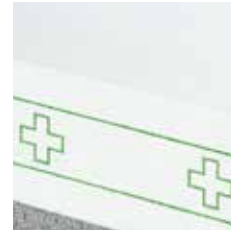
## Supplements



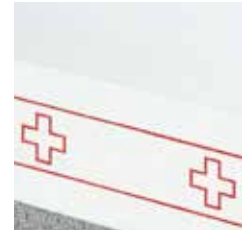
**5189**

Motif, embroidered cross and lines, can be embroidered on each altar cloth or alb.

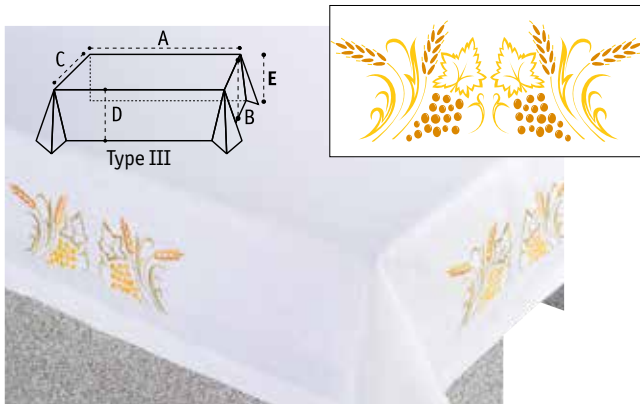
63-5189 (40)



63-5189 (30)

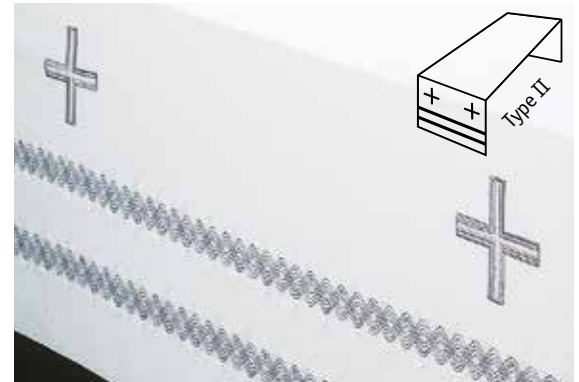


63-5189 (20)



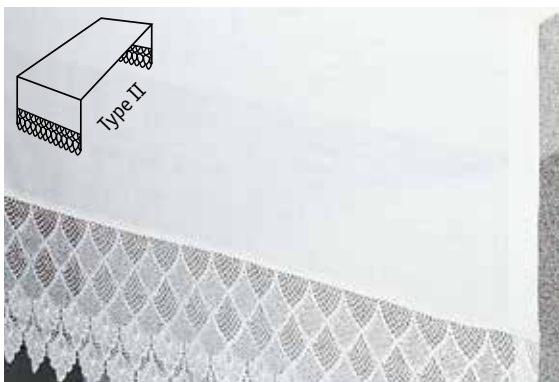
**3913**

Motif can be embroidered on each altar cloth or alb. 33 cm by 12 cm.



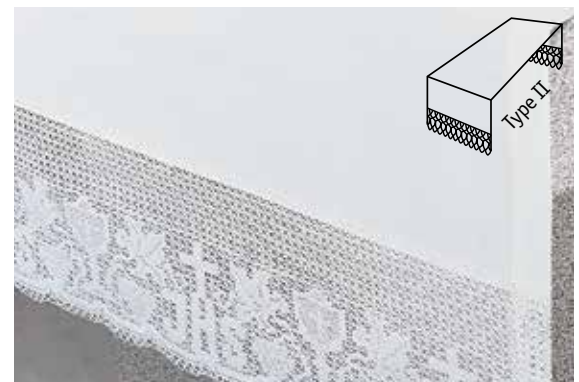
**3134**

Motif, linear embroidery and crosses can be embroidered on each altar cloth or alb.



**2788**

Lace in man-made fibres (25 cm) on the 2 side panels in the fabric of your choice.



**3382**

Lace in 100% cotton (28 cm) on the 2 side panels in the fabric of your choice.



**5189**  
In **Blended Linen**, with gold-coloured cross and lines.



**3500**  
In **Alpha-fabric**, of cotton and blended linen, with crosses woven into the material.



**2195**  
With cross and open hemstitch in the finest cotton batiste.



**3207**  
In fabric of cotton and linen. With Eucharistic motifs woven into the material.



**2196**  
With embroidered cross on **Ravenna-fabric**.



**2194**  
With embroidered motifs on **Blended Linen**.



**5046**  
In **Blended Linen**, with fleur de lis cross.



**5047**  
In **Blended Linen**, with Canterbury cross.



278-5274



278-5270



278-5271



278-5272



278-5273



278-5275



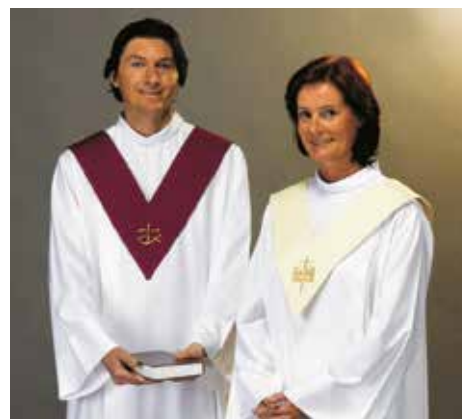
278-5276



278-5277



278-5278



278-5018



278-25



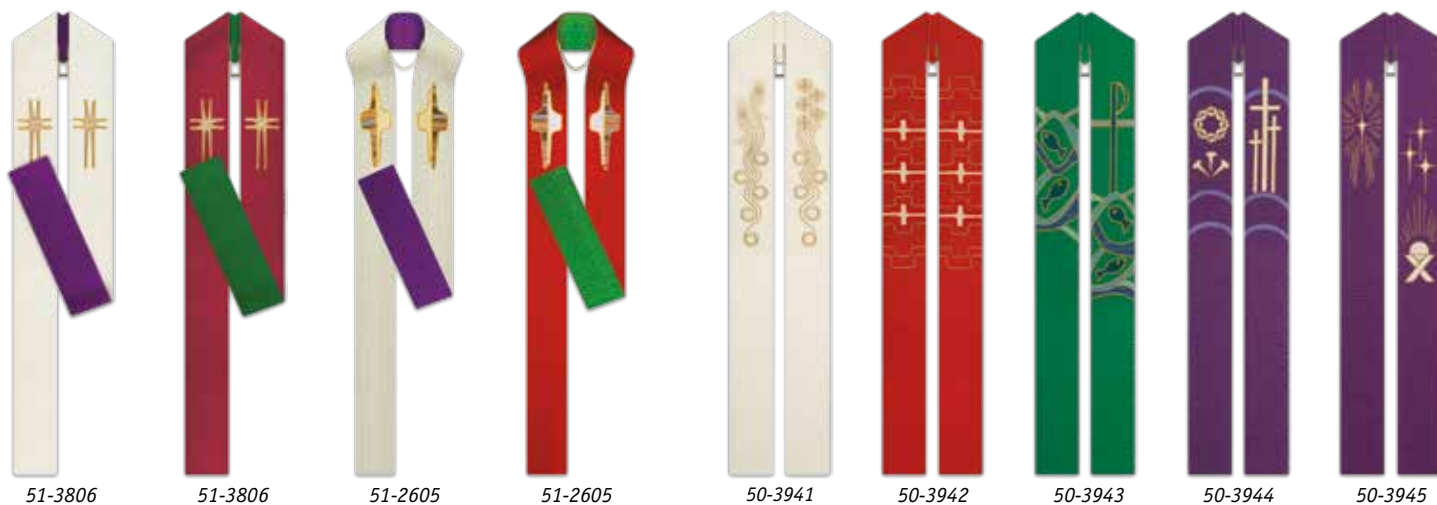
278-5175



278-5175



Order your scapular easily via the QR-code.



51-3806

51-3806

51-2605

51-2605

50-3941

50-3942

50-3943

50-3944

50-3945



50-3800

50-3807

50-3808

50-3809

50-3810

50-3811

50-3799

50-3801

50-3802

50-3803

50-3804



50-3047

50-3309

50-3359

50-5187

50-5221

50-5222

50-5018



Order your reversible overlay stole easily via the QR-code.



Order your overlay stole easily via the QR-code.



34-4739



34-2752

34-3160

34-3160

34-19

34-2605

34-3450

34-19



34-3160

34-3552

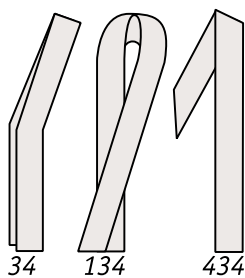
34-3358

34-19

34-3110

34-5290

34-3553



34

134

434

*All deacon stoles in this catalogue can be made as overlay stoles or as reversible stoles.*



Order your deacon stole easily via the QR-code.



7-2749



7-5343

7-5175

7-5148

7-3358

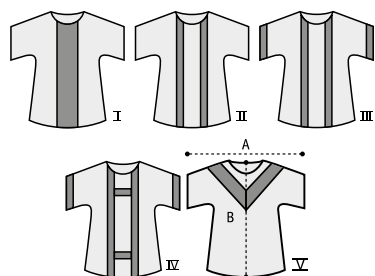


7-5149

7-3111

7-3576

7-3160



A matching dalmatic is available for each chasuble.

Order your dalmatic easily via the QR-code.





Order your amice simply with the QR-code.



Order your rope cincture for albs simply with the QR-code.



Order your vestment hanger, cover or clergy travel cover/bag simply with the QR-code.



Order these simple sets via the QR code.



Matching:





**Digital printed banner - (7505 - 7518). In Deco.**



Simply order your banner with this QR code.



**Screen printed banner - (7111 - 7155) In Raytex Dm.**





7144



7135



7134



7111



7112



7117



7118

↔ 100 cm



7148



7149



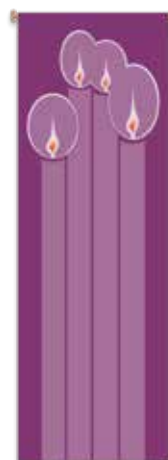
7124



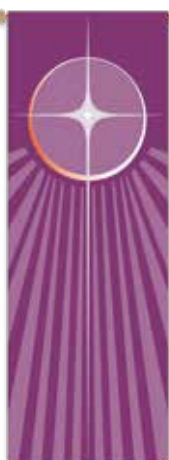
7126



7129



7119



7120

↕ 300 cm



7127



7128



7113



7114



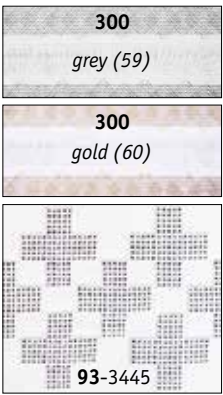
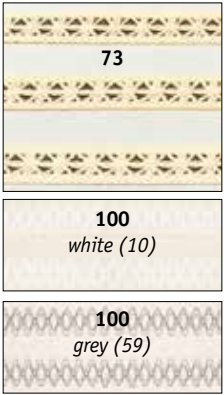
7115



7116



7122



Alb in coat style



With this QR code, simply order your **albe in coat style**: style 11, 29, 73, 93, 100 and 300.

**Standard sizes**

When ordering, please indicate length A-B: from base of the neck to top of shoe (usually approx. 30 cm less than person's height).

Neck size for sizes **Slim** and **Regular**: 42 cm.

Neck size for sizes **Large** and **XLarge**: 46 cm.

MEN	Chest C			
length A-B	95 cm slim	105 cm regular	115 cm large	125 cm XLarge
140 cm	SK	MK	LK	50
145 cm	0	2	5	51
150 cm	1	3	6	52
155 cm	8	4	7	53
160 cm	SG	MG	LG	54
LADIES length A-B	Chest C (in cm)		Size	
130 cm	80-85		L6	
132 cm	80-85		L8	
135 cm	85-95		L10	
135 cm	95-105		L11	
137 cm	85-95		L12	
137 cm	95-105		L13	
140 cm	95-105		L14	
145 cm	105-115		L15	
150 cm	115-125		L16	

Should your order not specify (C), regular (105 cm) for men and (85-95 cm) for ladies will be supplied.

11 (Leo) - Alb in coat style



95

195

Liturgical gown



244

Gown



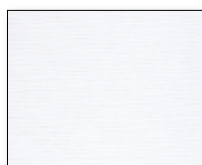
Athos-37



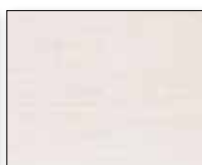
Brugia-92



Greco-77



Jersey-53



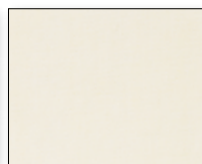
Leo-70



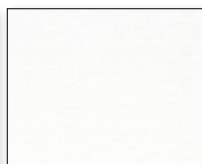
Livorno-20



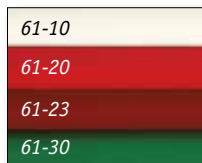
Pius-54



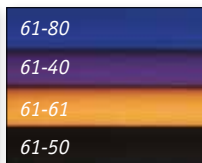
Prisma-26



Ravenna-87



Terlenka-61



Vaticano-67



44 (Vaticano)  
Sanctuary alb



With this QR code, simply order your **alb**: style 95, 195, 44 and 244.



285 - Terlenka



444-3718 - Terlenka



444-3382 Ravenna



14-3382 Ravenna

### Cassock , surplice and surplice-alb



Order these vestments with the QR-code.



414-61 - Terlenka



414-2195 - Terlenka



214-77 - Greco



14-945 - Greco



14-61 - Terlenka



4 - Vaticano



5 - Terlenka

### Washable surplice and washable choir and servers albs

Order your **surplice and choir and server albs**, with the QR-code.



414-61

Illustration: alb, style 205

**3647 - 3653** ↑ 61 cm  
Cord with hand-made tassel

**4614** ↑ 18.5 cm  
Small wooden cross, with ring.







↑ 18.5 cm    ▢ 42 cl

**4358**

Completely gold-plated, handmade silver-plated node.



↑ 21.5 cm    ⊕ 300/190

**4359**

Completely gold-plated, handmade silver-plated node.



*Information patens, see p. 60.*

*The height ↑ of the ciboria includes the cross on the lid. Capacities ⊕ are given in hosts, dia. 3 cm (1st n°: normal hosts, 2nd n°: thicker hosts).*





↑ 20 cm    ∇ 30 cl

**8075**

Chalice, gold-plated, with decorative node.



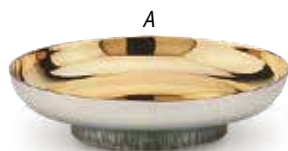
↑ 22.5 cm    ⊕ 300/190

**8275**

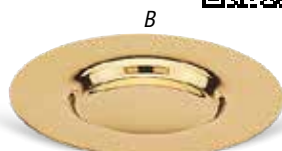
Ciborie, gold-plated, with decorative node.



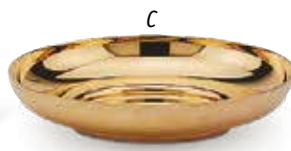
Paten.



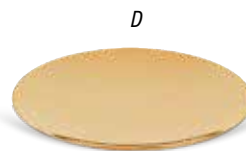
ø 15 cm  
⊕ 150/100



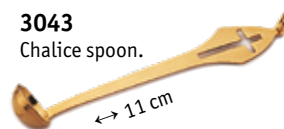
ø 15 cm  
⊕ 30/20



ø 15.5 cm  
⊕ 150/100



ø 14 cm  
⊕ 25/15



The height ↑ of the ciboria includes the cross on the lid. Capacities ⊕ are given in hosts, dia. 3 cm (1st n°: normal hosts, 2nd n°: thicker hosts).



↑ 17.7 cm    ▢ 68 cl

**4238**

Chalice, illustration "Lamb of God", silver-plated, inner cup gold-plated.



**3620/3621/3622**

Case for chalice and paten.



Ø 16 cm

**9238**

Matching paten.

Information patens, see p. 60.

The height ↑ of the ciboria includes the cross on the lid. Capacities ⊕ are given in hosts, dia. 3 cm (1st n°: normal hosts, 2nd n°: thicker hosts).





↑ 15.5 cm    ∪ 30 cl

**1825**

Chalice, all polished pewter.



↑ 18.5 cm    ⊕ 200/125

**1826**

Ciborium, all polished pewter.



↑ 16 cm    ∪ 49 cl

**5055**

Chalice, entirely stainless steel; node with bread symbol.



↑ 18 cm    ⊕ 270/165

**5056**

Ciborium, entirely stainless steel; node with bread symbol.



Information patents, see p. 60.

The height ↑ of the ciboria includes the cross on the lid. Capacities ⊕ are given in hosts, dia. 3 cm (1st n°: normal hosts, 2nd n°: thicker hosts).



∅ 15.5 cm    ⊕ 150/100

**3177**

Paten-open ciborium in brass, gold-plated.



∅ 16 cm    ⊕ 280/175

**2037**

Paten-open ciborium, structured stainless steel, gold-plated inside.



↔ 25.5 cm    ⊕ 250/160

**3780**

Paten in "Ictus" fish-shape, hammered and gold-plated 24 carat.



∅ 14 cm    ⊕ 380/240

**3299**

Deep paten, brass, base hand hammered, gold-plated.



↑ 8.8 cm    ∅ 15 cm    ⊕ 320/200

**4146**

Paten-open ciborium all pewter, polished, hand-hammered.



∅ 15 cm    ⊕ 320/200

**4145**

Paten-open ciborium, all pewter, polished, hand-hammered.





## Pyxes



**3250** ø 4.3 cm ⊕ 9/5



**3265** ø 4.3 cm ⊕ 9/5



**3235** ø 4.3 cm ⊕ 9/5



**3292** ø 4.3 cm ⊕ 15/6



**3275** ø 4.3 cm ⊕ 9/5



**3252** ø 5.6 cm ⊕ 24/8



**3251** ø 5.6 cm ⊕ 24/8



**3278** ø 5.6 cm ⊕ 24/8



**3255** ø 8.4 cm ⊕ 75/25



**3254** ø 8.4 cm ⊕ 75/25



**6254** ø 8.4 cm ⊕ 75/25



**3346**  
Case in genuine leather, with cord, for pyxes  
up to dia. 6 cm.



ø 16 cm ⊕ 320/200

↑ 12 cm



**3394**  
Chalice and paten all  
stainless steel.



22.5 cm ↑

9 cm ↙

↘ 22 cm

↑ 18 cm  
▽ 20 cl



**3441**  
Case, with 3 ampullae with stopper.

Capacities ⊕ are given in hosts, dia. 3 cm (1st n°: normal hosts, 2nd n°: thicker hosts).



↑ 16.5 cm ▢ 65 cl

**1254**

Chalice, hand-blown glass, engraved motif.



↑ 37 cm ▢ 90 cl

**1268**

Flagon with stopper, hand-blown glass, engraved motif.



ø 14 cm ⊕ 150/100

**1255**

Bowl paten, hand-blown glass, engraved motif.



↑ 7 cm ▢ 7 cl

↔ 27 cm ↗ 17cm

**3740**

2 cruets, with tray, all in recycled glass



↑ 7 cm ø 15 cm ⊕ 250

**3759**

Paten, in recycled glass.



↑ 23 cm ø 10.5 cm

**3758**

Chalice, in recycled glass.

Capacities ⊕ are given in hosts, dia. 3 cm (1st n°: normal hosts, 2nd n°: thicker hosts).



**5760**

Tray and 2 cruets with wine or water motif on lid, all in stainless steel satinized.



**3890**

Tray in stainless steel with wine or water motif, relief engraved on glass cruets and on stainless steel lid.



**1372**

Tray in stainless steel with holders and 2 glass cruets with handle, relief engraved with wine or water motif.



**5705**

Tray in stainless steel with 2 holders, and 2 glass cruets with printed water or wine symbol.



**1970**

Glass cruet with engraved water symbol.



**1969**

Glass cruet with engraved wine symbol.



**1275**

Glass cruet with relief engraved wine symbol.



**1274**

Glass cruet with relief engraved water symbol.



**3477**

Round case complete set, leather-look, with matching contents.



**3612**

Compact home Mass Set with practical carrying or shoulder bag; with removable shoulder strap. Handy cover.



**3613**

Compact home Mass Set with practical carrying or shoulder bag; with removable shoulder strap. Handy cover.



**4317**

Complete home Mass Set, solid case made of ABS, with alu-frame.





**3316**  
Complete sick-call set.



**3309**  
Complete sick-call set.



**2831**  
Case for three ampullae for oilstock 2827 (INF), 2828 (CHR), 2829 (CAT).



**2444**  
Case for three ampullae for oilstock, ampullae 5104, 5105, 5106 and spoon.



Ampullae for oilstock. With screw-cap, symbol of oil lamp, cap silver-plated.



Triple oilstock.



**5134** ↑ 5,4 cm



**5104** ↑ 2 cm ø 5 cm ▮ 2 cl



**5105** ↑ 2 cm ø 5 cm ▮ 2 cl



**5106** ↑ 2 cm ø 5 cm ▮ 2 cl





372

Gothic French monstrance with removable luna.

Representation of Our Lady of Lourdes, the Sacred Heart and St.-Joseph, as well as Holy Spirit symbol. With matching case.



↑ 38 cm  
⊕ ø 7 cm



**8407**  
Baroque monstrance, gold-plated and silver-plated;  
with removable luna.



↑ 40 cm  
⊕ ø 9 cm



**2844**  
Hand-hammered, entirely gold-plated;  
node silver-plated, with bread and fish symbols,  
removable luna.



**3061** Silver-plated



**3058** Gold-plated

↑ 13.5 cm  
⊕ ø 7 cm



↑ 13 cm



**4453**  
Altar bell, three bells, handle in cast  
bronze, bells in cast brass, polished.



**4454**  
Altar bell, four bells, handle in cast  
bronze, bells in cast brass, polished.



↑ 22 cm ↗ 38 cm



**4930**  
Alms bag, red. With handles in  
brass with wood and pouch in  
velvet.



↑ 22 cm ↗ 38 cm

**4931**  
Alms bag, blue. With handles in  
brass with wood and pouch in  
velvet.



**7603**  
Adjustable lectern  
(round base), in cast  
brass.



↕ 60 cm

**2663**  
Cast brass candlestick.



↕ 100 cm

**7601**  
Cast brass candlestick.



↕ 100 cm

**7751**  
Cast brass candlestick.



125 cm ↕

**7752**  
Cast brass paschal  
candlestick.



↕ 60 cm

**2681**  
Cast brass  
candlestick.



↕ 37 cm



**3081**  
Cross in brass.



↕ 9 cm  
ø 13 cm

**3080**  
Candlestick in brass.



↕ 22 cm  
ø 13 cm

**3075**  
Candlestick in brass.



↕ 15 cm  
ø 13 cm

**3072**  
Candlestick in brass.

Torch in lacquered brass (no maintenance); candle supported by a coiled spring, pushing the candle up. Standard supplied with acrylic globe 3699.



↑ 103 cm

**3592**  
Set of 4 torches 3591 and  
stand 1932

**3591**  
Torch, brass nickel-plated.



**1931**  
Stand for 1 processional torch.

**1932**  
Stand for 4 processional torches.



↑ 103 cm

**3709**  
Set of 4 torches 3708 and  
stand 1932.

**3708**  
Torch, brass polished

**1932**

**1931**  
Stand for 1 processional torch



↑ 14.5 cm  
ø 11.5 cm

ø 7.5 cm



**1810**  
Separate glass globe tulip-shaped for torch.



**3591**



↑ 12 cm  
ø 3 cm

**1252**



↑ 12 cm  
ø 3 cm

**3708**





**38000**  
Folding altar in ash wood.



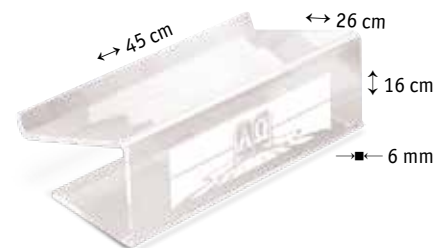
**18000**  
Folding lectern in ash wood.



**26000**  
Adjustable lectern in walnut wood.



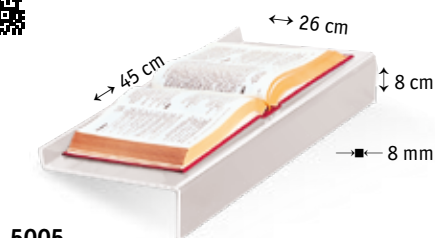
**2005**  
Baptismal font with lid, brass, polished.



**5019**  
Lectionary stand, in plexiglass, with Alpha and Omega symbols on front.



**4349**  
Adjustable lectern in wood, easily portable in Home Mass Set.



**5005**  
Lectionary stand, in plexiglass, without motif.



**2329**  
Support for baptismal font in light coloured beech wood.

Wrought iron

40 cm ↑  
40 cm ↔

5045

**5045**  
Baptismal towel, with  
embroidered symbol.



ø 44 cm

**3881**

Baptismal font with lid.

↑ 80 cm



**3794**

As 3881, without lid.

ø 44 cm

↑ 80 cm

**3783**

Support for "Holy Fire",  
flower stand or support as  
advent wreath.

100 cm ↑



Disc "Holy Fire".

**9180**



ø 30 cm



ø 45 cm

**4095**

Tray for "Holy Fire".

Steel, black protective powder coating.

**5520**

Red sanctuary lamp.

ø 8 cm

16.5 cm ↑

**3981**

LED candle.



↑ 104 cm



10 cm ↑



↔ 45 cm

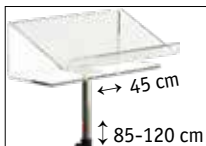
**5017**

Dark wooden lectern.  
The height can be  
adjusted.

↑ 85 - 120 cm



15 cm ↑



↔ 45 cm

↑ 85-120 cm

**5018**

As 5017, with plexi lectern.  
The height can be adjusted.

Wrought iron

↑ 122 cm



**3791**

Easter candlestick.

**4134**

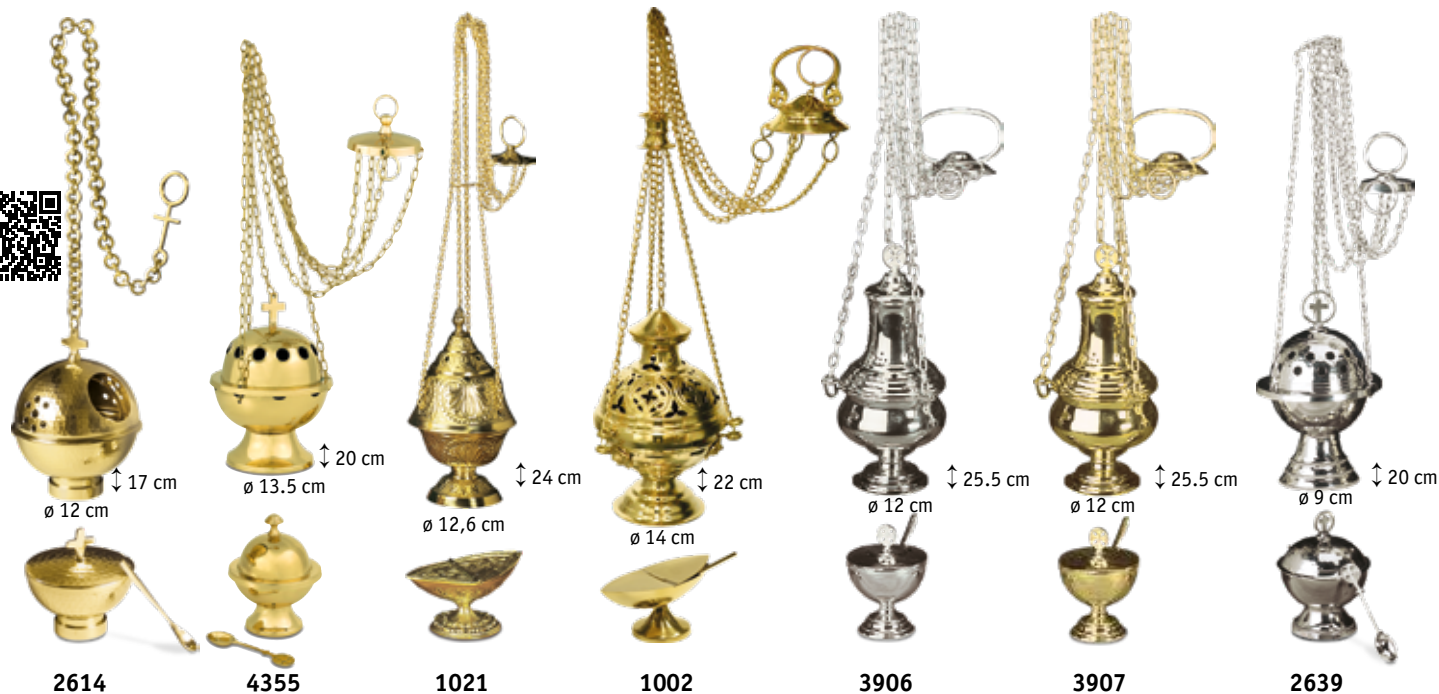
High candlestick,  
round base.

60 cm ↑



**4139**

Only support for sanctuary  
lamp on base.



Censer in brass or nickel-plated as shown, with boat and spoon.

### 3698

Complete set. In brass, polished and lacquered (no maintenance).



### 3697

Complete set. In brass, nickel-plated.



### 3695

Sprinkler in brass, with wooden handle.

### 3696

Sprinkler in brass, nickel-plated.

### 3693

Holy Water vat in brass.



### 2365

Sprinkler in brass.

### 2612

Holy Water vat in brass.

### 2364

Sprinkler in brass, nickel-plated.

### 2613

Holy Water vat in brass, nickel-plated.



24 cm ↑

1724

Cross, Risen Christ, dry sand cast bronze.



↔ 24 cm

4465

Altar cross (recumbent), brass.



ø 13.5 cm

4068

Candle holder,  
dry sand cast bronze.



↑ 10 cm

1453

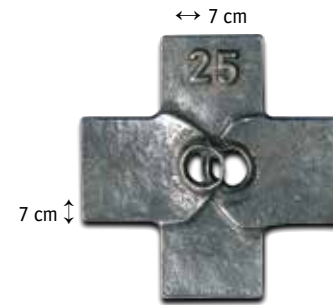
Brass, bronze colour.



↑ 10 cm

1426

Emmaus Disciples,  
dry sand cast bronze.

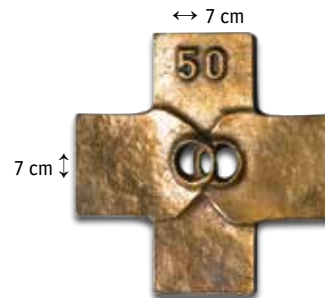


↔ 7 cm

7 cm ↑

4425

Matrimonial cross, 25 years,  
silver colour.



↔ 7 cm

7 cm ↑

4450

Matrimonial cross,  
50 jaar, bronze colour.



↔ 7 cm

7 cm ↑

4334

Matrimonial cross, silver colour.



**5499**  
Stations of the Cross, 14 Stations, in cast polyester. Polychrome finish.

**5420**  
Stations of the Cross, 14 Stations, in cast polyester. Polychrome finish.



**5409**  
Stations of the Cross, 14 Stations, in cast polyester. Wood colour.



**5418**  
Stations of the Cross, 14 Stations, in cast polyester. Bronze colour.



Wooden cross, hand-painted in El Salvador

3763 15 cm ↑  
3764 20 cm ↑  
3876 45 cm ↓

"Good Shepherd"

3761 12 cm ↑  
3762 20 cm ↓

Ark of Noah

3765 15 cm ↑  
3766 20 cm ↓

Risen Christ and Holy Spirit.

3878 15 cm ↑  
3877 20 cm ↓

Jesus with the children.

3701

3 cm  
3.2 cm  
0.4 cm  
2.2 cm

3700

3 cm  
3.2 cm  
0.4 cm  
2.2 cm

Rosary

13 cm  
1.5 cm

2134

Wooden memorial cross.

15 cm  
25 cm

4132

Cross, olive wood.

6 cm  
3.2 cm  
0.4 cm  
2.2 cm

3703

6 cm  
3.2 cm  
0.4 cm  
2.2 cm

3702

4129

Cross olive wood, with carved corpus.

Dove of Peace,  
olive wood.

**3873**

↕ 3.5 cm

**4613**  
Cross, wood.

↕ 11.8 cm

**4625**  
Cross, wood.

↕ 9 cm

**3729**  
Dove of Peace,  
silver-plated  
(oxidized).

↕ 4.5 cm

**5000**  
Rosary, pine  
wooden beads.

↕ 53.5 cm

**5001**  
Rosary, pine wood.

↕ 11.5 cm

**4100**  
Deacon cross, olive wood.

↕ 5 cm



**4128**  
Cross, olive wood.

↕ 7 cm

**4127**  
Cross, olive wood.

↕ 6 cm

**3871**  
Cross, Dove of Peace  
carved in olive wood.

↕ 5 cm

**3730**  
Cross,  
fish-and-loaf  
symbol, silver-plated  
(oxidized).

↕ 6 cm



**3875**  
"Tau" cross, olive wood.

↕ 3.5 cm

**3874**  
Rosary, olive wood.

↕ 5 cm



5,5 cm

↕ 8 cm

↕ 9.4 cm

↕ 7.2 cm

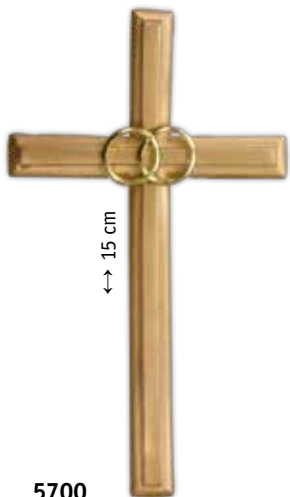
**8250**  
Wooden giftbox.

**8221 - 8244**

Wooden prayer-dice.

In English (8223), Dutch (8221), French (8222),  
German (8224), Italian (8225), Spanish (8226),  
Portuguese (8227) and Polish (8244).





**5700**  
Matrimonial cross, metal,  
bronze coloured.



**5725**  
Matrimonial cross, 25 years ,  
metal, silver coloured, with patina.



**5750**  
Matrimonial cross, 50 years,  
metal, brass coloured.



**199**  
Baptismal shell, gold-plated.



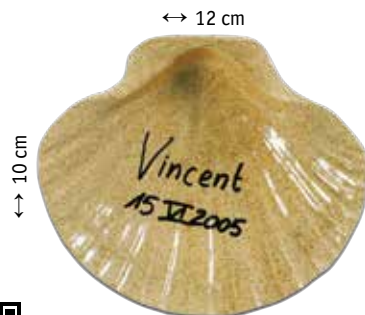
**2313**  
Baptismal shell, silver-plated.



**4005**  
Tray in pewter, with ampullae  
5105 (CAT) and 5106 (CHR)



**121**  
Baptismal scapular.

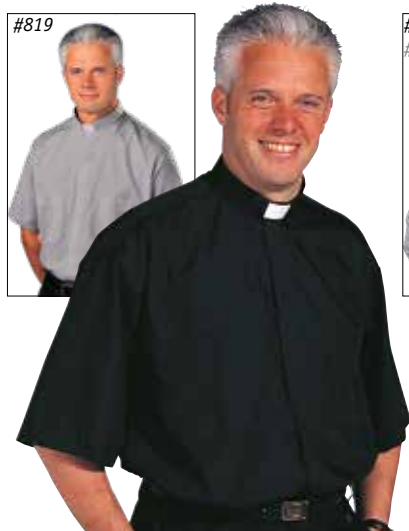


**3682**  
Baptismal shell, of white  
Westerwald clay, inside glazed  
finishing.



### Original Stadelmaier® shirts

**Tradicio:** Short sleeves #811 (black) #819 (grey); long sleeves #812 (black) #814 (grey) extra long sleeves #813 (black) #815 (grey)  
**Torino:** Short sleeves #861 (black); long sleeves #862 (black); extra long sleeves #863 (black)



#811



#812 #813



#861 #862 #863



#511



### Original Slabbinck® shirts

**Classico:** Short sleeves #31 (black) #35 (grey); long sleeves #16 (black) #17 (grey)  
**Romano:** Long sleeves #55 (black)

Shirt front #511 (black)



#31



#35



#17



#16



#55



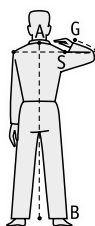
#55



Cuff links



## GENERAL INFORMATION: SIZES AND FINISHES



For standard and special sizes and neck finishes, as shown on illustrations, charts and sketches.  
All measurements are given in centimeters.  
We supply size and neckline, according to the illustration in the catalogue, unless otherwise specified in your order.  
Extra charges are possible for special designs and measurements.

### Alb, Sanctuary Alb, Liturgical Gown, Tunic

#### Standard size

When ordering, only A-B = length to be indicated: from the top vertebra to the top of the shoe (30 cm less than person's total height).

#### Special size

##### I Standard size with minor adjustments

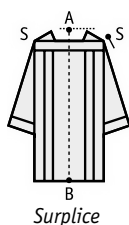
Adjustment A-B = back length and S-G = sleeve length; when ordering, please indicate desired standard size and quote special measurements A-B = back length, S-G = sleeve length and C = chest size.

Supplement for adjustment: Back length and sleeve length \*

##### II Entirely custom-made

Please give the following measurements: A-B = length, C = male chest size or female bust size, W = waist, S-S = shoulder to shoulder, S-G = sleeve length and A-G = measurement from centre back plus sleeve length; preferably also neck size or shirt number size. Supplement \*

When ordering, please specify if for a man or woman.



### Surplice

#### Standard size

Chest 105 cm.

Only A-B = length to be indicated when ordering:

- for altar servers: 40, 50, 60 or 70 cm;
- for adults: 90 (small), 97.5 (medium) or 105 cm (large).

#### Special size

##### I Standard size with adjustments

Indicate A-B = length, S-S = shoulder to shoulder and S-G = sleeve length when ordering. Supplement \*

##### II Entirely custom-made

Please give the following measurements: A-B = length, C = male chest size or female bust size,

S-S = shoulder to shoulder, S-G = sleeve length. Supplement \*



### Cope, Humeral veil, Mitre

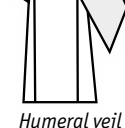
#### • Cope

When ordering, indicate A-B = length of cope and person's total height (length of the cope is 35 cm less than person's height). Without indication of length, we supply standard size 145 cm.

Supplement lining for cope \*

Overlay stole or inside stole NOT included in price of cope.

Please order separately.



Humeral veil

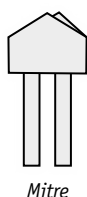
#### • Humeral veil

Available with matching decoration. Standard finish is always lined.

Size: 54 x 275 cm.

#### • Mitre

When ordering, please indicate head size.



Mitre



\* Prices: see our pricelist.



**Chasuble, Monastic Chasuble, Dalmatic**

- Prices include (unless otherwise specified):
- small chasuble or dalmatic stole to be worn under the garment;
  - if embroidered, same embroidery on front and back;
  - neck finish according to catalogue;
  - unlined.

**Standard size**

Style	A = width	B = length	Supplement
Small	150-160 cm <sup>1)</sup>	125 cm	Basic price
Standard	150-160 cm <sup>1)</sup>	135 cm	Basic price

<sup>1)</sup> According to the width of the fabric, see information fabrics for vestments and paraments p. 86 and 87.

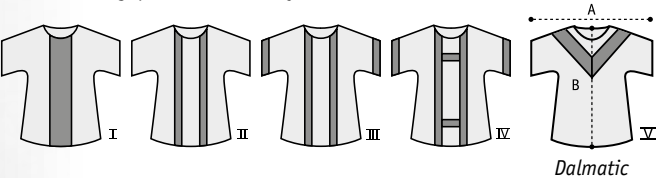
**Special size**

2	Supplement monastic chasuble	*
9	Special, custom-made	upon request

Available at extra charge:

Chalice veil, unlined, 58 x 58 cm	upon request
Chalice veil, lined, 58 x 58 cm	*
Burse, 20 x 20 cm	*
Benediction burse (without embroidery), 23 x 23 cm	upon request
Chasuble or dalmatic inside stole to be worn under chasuble or dalmatic	*
Lining for chasuble or dalmatic	*

**Dalmatic:** a matching dalmatic is available for each chasuble. Price upon request. When ordering, please indicate style I, II, III, IV or V.



**Neck finish**

F = neck size; H = height of collar or capuche. The neck finish indicated in the catalogue is included in the price; other neck finishes are available at extra

charge or reduction according to tariff below.

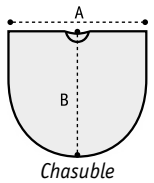
N°	Neck finish	F	H	Price difference
0	Plain	64 cm	-	Basic price
1	Plain neckline, with zipper on left shoulder	62 cm	-	*
3	Roll-collar	66 cm	12 cm	*
4	Roll-collar	65 cm	9 cm	*
6	Low stand-up collar	68 cm	8 cm	*
6A	As 6, embroidered	68 cm	8 cm	*

**Embroidered memorial label.**

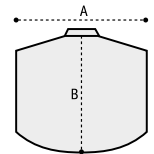
Can be applied to all vestments and paraments. Text is embroidered on the lining of the stole. A lasting memorial.

**85** Label, gold colour embroidery, per letter

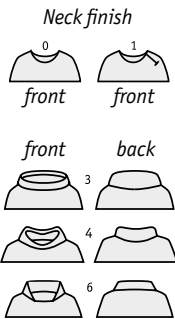
Example:



Chasuble



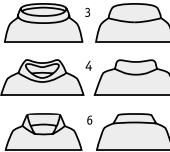
Monastic Chasuble



Neck finish

front front

front back



front back

front back

front back

front back

front back

front back

front back

front back

front back

front back

front back

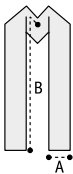
front back

front back

front back

\* Prices: see our pricelist.

GENERAL INFORMATION: SIZES AND FINISHES



Overlay stole (single-sided or reversible), Deacon stole

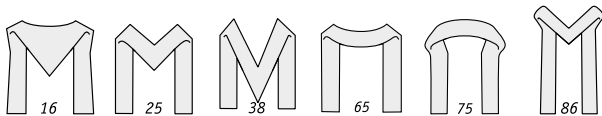
• Overlay stole

Always lined and interlined; available with different neck finishes, supported by an elegant chain (except style 107), which prevents the stole from rubbing neck or hair, and saves the use of a stole protector.

I Single-sided overlay stole

Style and neck finishes: A = width at ends; B = overall length, neck finishes included. The neck finish indicated in the catalogue is included in the price; other neck finishes are available at extra charge or reduction,

\*

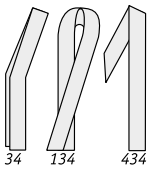


N°	Neck finish	Width A	Length B
16	Full tapered flat capuche; spreading out towards ends	16 cm	160 cm
25	Flat capuche	12 cm	145 cm
38	Tapered flat capuche	12 cm	155 cm
65	Flat rounded neck finish	12 cm	145 cm
75	Stand-up collar	12 cm	145 cm
86	Pointed flat capuche; spreading out towards ends	16 cm	160 cm
107	Flat rounded neck finish with cutouts in front	13 cm	145 cm

II Reversible overlay stole

Manufactured like the overlay stole, but reversible: white-purple, red-green or other colour combinations.

• Deacon stole



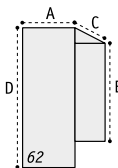
Matching the design of the overlay stole. Worn from left shoulder to right hip. Deacon stoles will be delivered for a standard chest size 95-115 cm. On request deacon stoles can be made to custom size at no additional charge. Standard chest size (95-115 cm) will be supplied unless otherwise requested. Style 34: embroidery in front at chest height, on back on lower panel.

Style 134: Crossed style

Style 434: Byzantine cut, with band front and back.

N°	Type	Width A	Length B
34	Standard	12 cm	145 cm
134	Crossed style	12 cm	145 cm
434	Byzantine	12 cm	130 cm

Lectern cover, Pulpit cover, Altar paraments, Altar cover, Antependium, Half Altar cover



Lectern cover

Lined and interlined; finished with an open hem at the top and the bottom; microphone opening to order<sup>2)</sup>.

• Lectern cover, style 62

A = width up to 60 cm (at indicated price, without supplement); D = front drop; C = depth; E = back drop; D + C + E = overall length.

Standard sizes D + C + E = 180 cm. A = 45 cm. D = 110 cm.

Special sizes If longer or deeper than standard sizes, add a supplement per cm

\*

• Pulpit cover, art. 115

Same finish as lectern cover art. 62, but with different standard sizes and special sizes.

Standard sizes D + C = 100 cm. A = 45 cm. D = 55 cm.

Special sizes If longer or deeper than standard sizes, add a supplement per cm (same as for lectern cover art. 62)

\*

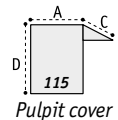
• Altar paraments, style 114

Same finish as lectern cover art. 62, but with different standard sizes and special sizes.

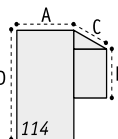
Standard sizes D + C + E = 150 cm. A = 45 cm. D = 75 cm.

Special sizes If longer or deeper than standard sizes, add a supplement per cm (same as for lectern cover art. 62)

\*



Pulpit cover



Altar paraments



\* Prices: see our pricelist.

#### • Altar cover, style 64

A = width up to 105 cm (at indicated price, without supplement);  
D = front drop; C = depth; E = back drop; D + C + E = overall length.

**Standard sizes** D + C + E = 190 cm. A = 90 cm. D = 90 cm.

**Special sizes** If longer or deeper than standard sizes, add a supplement per cm

#### • Antependium, style 112

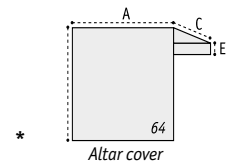
A = width up to 180 cm (at indicated price, without supplement); D = front drop;  
C = depth; E = back drop; D + C + E = overall length.

**Standard sizes** D + C + E = up to 190 cm. A = up to 180 cm. D = 90 cm.

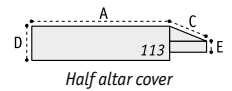
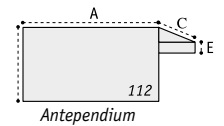
#### • Half altar cover, style 113

Same as antependium, style 112 but with different standard sizes and special sizes.

**Standard sizes** D + C + E = up to 130 cm. A = up to 180 cm. D = 35 cm.



\*



### Altar cloth, Laudian frontal, Half Laudian frontal

Microphone opening and special cut-out (e.g. tabernacle) to order<sup>2)</sup>.

#### • Altar cloth, style 63

When ordering, indicate measurements for **finished** altar cloth; A = length of mensa;

B = side drops;

C = depth of mensa; D = front drop; E = back drop.

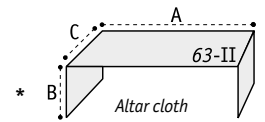
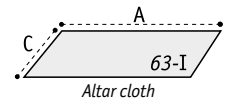
If depth (C) is over the width of the fabric, the altar cloth is finished with a seam.

There is 1 meter minimum charge.

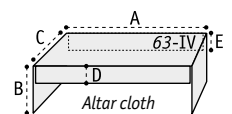
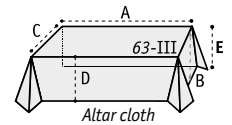
The necessary fabric is added to the altar cloth (style 63), to compensate for shrinking during first laundering. Due to the different washing and laundering procedures, the fabric may shrink more or less than anticipated. Therefore, all altar cloths are provided with a large hem of 4 cm to be adjusted if necessary.

Prewash is possible if requested, supplement is

The front and back drop of type IV, are always attached by seams to the altar cloth.



\*



price upon request

price upon request

#### • Laudian frontal, style 66

Covers the altar on all sides, corners are rounded. Interlined. Finished with a middle seam in the length. When ordering, indicate measurements for **finished** laudian frontal:

A = length of mensa; C = depth; D and E = equal front and back drops, usually 5 cm less than altar height.

#### Special sizes

If the measurement A is more then 180 cm,  
supplement per cm

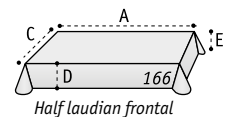
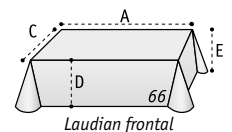
If the measurement C + D + E is more than twice  
the width of the fabric

price upon request

#### • Half Laudian frontal, style 166

Same as laudian frontal, style 66, but with shorter front, back and side drops D and E up to 25 cm.

#### Special sizes



prices upon request

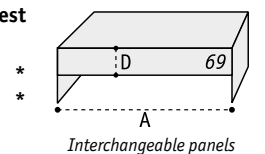
### Interchangeable altar panels

#### • Interchangeable superfrontal, style 69

Adorns front of altar cloth. When ordering, please indicate:

A = length of mensa (standard length 180 cm; over 180 cm, supplement per cm);

D = height (standard ht. 25 cm; over 30 cm; supplement per cm)



\*

\*

<sup>2)</sup> Microphone opening, supplement of  
Special cut-out, supplement of

No deduction for less than standard size.



\* Prices: see our pricelist.

General information: wash-and-wear fabrics for albs

↔ 150 cm

Athos 37-59

70% man-made fibres, 30% viscose, 200 g per m².

↔ 150 cm

Brugia 92-10

92-14

92-50

100% wool, 180 g per m².

↔ 150 cm

Greco 77-14

70% man-made fibres, 30% viscose, 175 g per m².

↔ 150 cm

Jersey 53-10

100% man-made fibres, 240 g per m².

↔ 150 cm

Leo 70-12

90% man-made fibres, 10% flax, 205 g per m².

↔ 150 cm

Livorno 20-10

20-14

20-50

55% man-made fibres, 45% wool, 180 g per m².

↔ 150 cm

Malta 66-10

70% man-made fibres, 30% viscose, 265 g per m².

↔ 160 cm

Pius 54-10

54-101

54-14

100% man-made fibres, 150 g per m².

↔ 150 cm

Prisma 26-10

45% wool, 55% man-made fibres, 250 g per m².

↔ 150 cm

Ravenna 87-10

70% man-made fibres, 30% viscose, 210 g per m².

↔ 150 cm

Vaticano 67-14

70% man-made fibres, 30% viscose, 265 g per m².

↔ 150 cm

↔ 150 cm

Terlenka 61-10

61-101

61-20

61-23

61-30

Terlenka 61-80

61-40

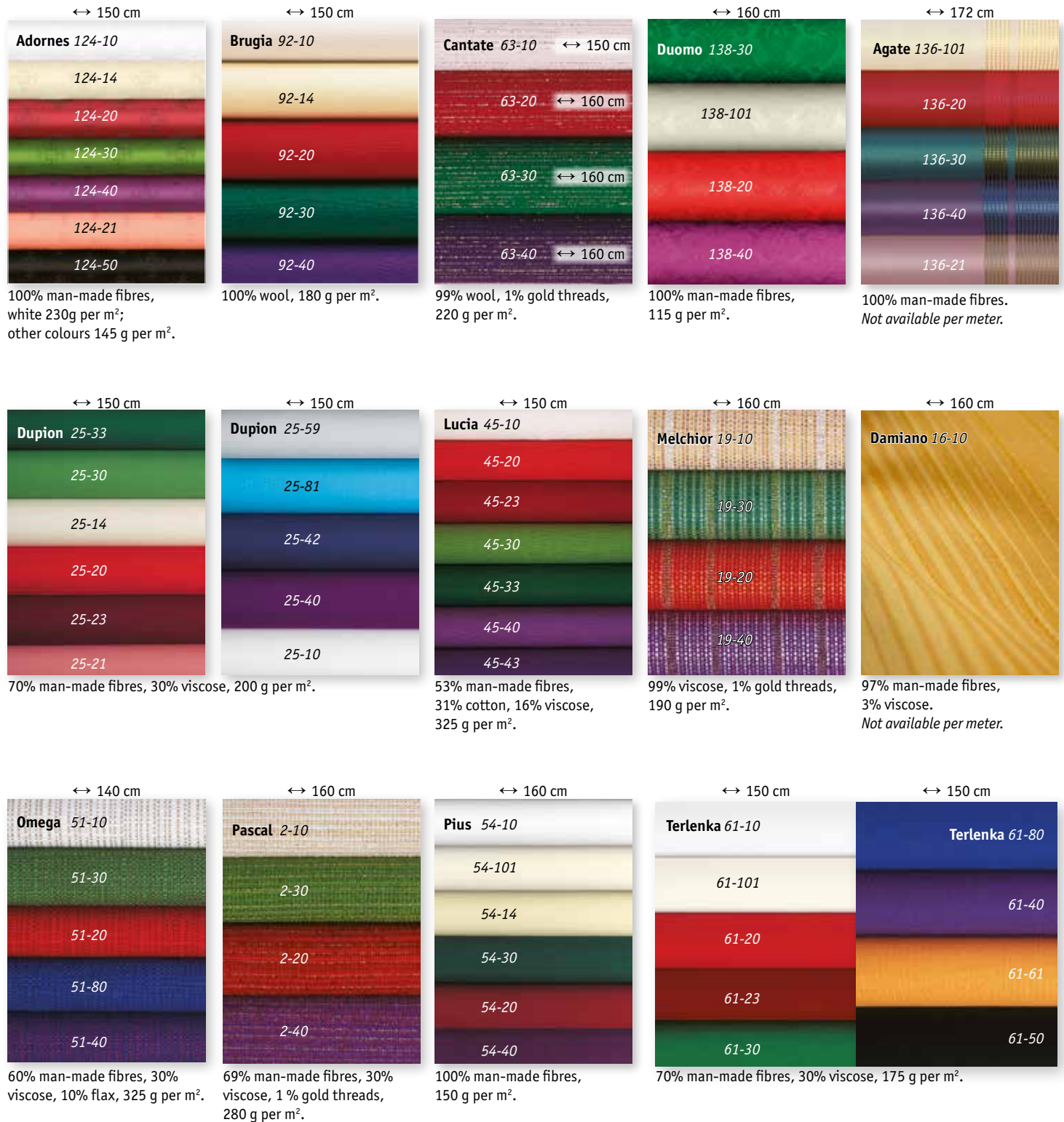
61-61

61-50

70% man-made fibres, 30% viscose, 175 g per m².

Colour references in this catalogue are close to reality, but can't perfectly reflect it; if necessary please ask your sales representative for colour samples. Slabbinnck nv declines any responsibility regarding colour discrepancies.

## General information: fabrics for vestments and paraments



Colour references in this catalogue are close to reality, but can't perfectly reflect it; if necessary please ask your sales representative for colour samples. Slabbinck nv declines any responsibility regarding colour discrepancies.

Due to your many requests for an economical collection of vestments, we introduce "Assisi by Slabbinck".

Although not made in the Slabbinck workshop in Belgium, it is manufactured with the same eye for excellence as our other Slabbinck paraments.

Each article is checked for quality by Slabbinck before being shipped.

No custom size nor custom design possible.



701011



701012



701013



701014



707014



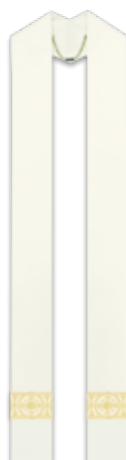
707011



707012



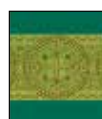
707013



750011



750012



750013



750014



734014



734011



734012



734013

In **Elias** fabric. No custom size nor custom design possible.

**701011, 701012, 701013, 701014** Chasuble, with orphrey.

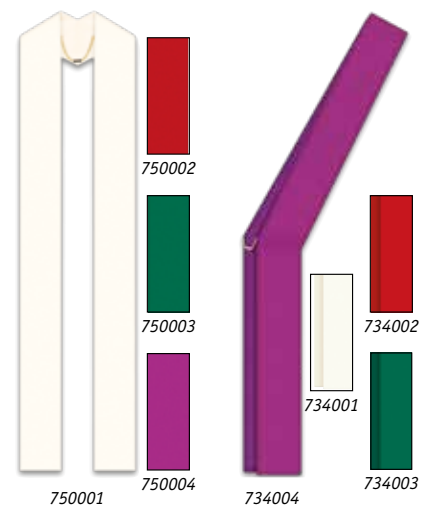
**707011, 707012, 707013, 707014** Dalmatic, orphrey on sleeves.

**750011, 750012, 750013, 750014** Overlay stole, style 25.

**734011, 734012, 734013, 734014** Deacon stole.



\* "Assisi by Slabbinck" 10% discount for purchase of 4 chasubles, 4 dalmatics or 4 stoles of the same design (in ecru, red, green and purple colour).



In **Elias** fabric. No custom size nor custom design possible.

**701021, 701022, 701023, 701024** Chasuble, with embroidered cross.

**701031, 701032, 701033, 701034** Chasuble, with small braid and embroidered cross

**701041, 701042, 701043, 701044** Chasuble, with woven band

**701051, 701052, 701053, 701054** Chasuble, with orphreys

**701001, 701002, 701003, 701004** Plain chasuble.

**707001, 707002, 707003, 707004** Plain dalmatic.

Matching:

**750001, 750002, 750003, 750004** Plain overlay stole.

**734001, 734002, 734003, 734004** Plain deacon stole.

\* "Assisi by Slabbinck" 10% discount for purchase of 4 chasubles, 4 dalmatics or 4 stoles of the same design (in ecru, red, green and purple colour).

Due to your many requests for an economical collection of vestments, we introduce "Assisi by Slabbinck". Although not made in the Slabbinck workshop in Belgium, it is manufactured with the same eye for excellence as our other Slabbinck paraments. Each article is checked for quality by Slabbinck before being shipped.

No custom size nor custom design possible.



711011



785015

**Coat style alb, Off-white.**

Reference	Length A-B / Chest C 105 cm (regular); 115 cm (large)
711011	140 cm / 105 cm
711021	145 cm / 105 cm
711031	150 cm / 105 cm
711041	155 cm / 105 cm
711051	160 cm / 105 cm
711061	145 cm / 115 cm
711071	150 cm / 115 cm
711081	155 cm / 115 cm

**Cassock Black.**

	Neck	Chest	Length	Sleeve
785015 XS - 70	38 cm	102 cm	147 cm	84 cm
785025 S - 71	41 cm	107 cm	147 cm	84 cm
785035 M - 72	41 cm	112 cm	152 cm	86 cm
785045 L - 73	43 cm	117 cm	157 cm	89 cm
785055 XL - 74	45 cm	122 cm	157 cm	89 cm
785065 XXL - 75	48 cm	127 cm	157 cm	89 cm

Matching cassock cincture, custom-made, available.

822 / 131354  
04/06/2008



With this QR code you can download, consult and possibly print our price list. Please note that the current prices can always be found on our website.



[info@slabbinck.com](mailto:info@slabbinck.com)  
[www.slabbinck.com](http://www.slabbinck.com)